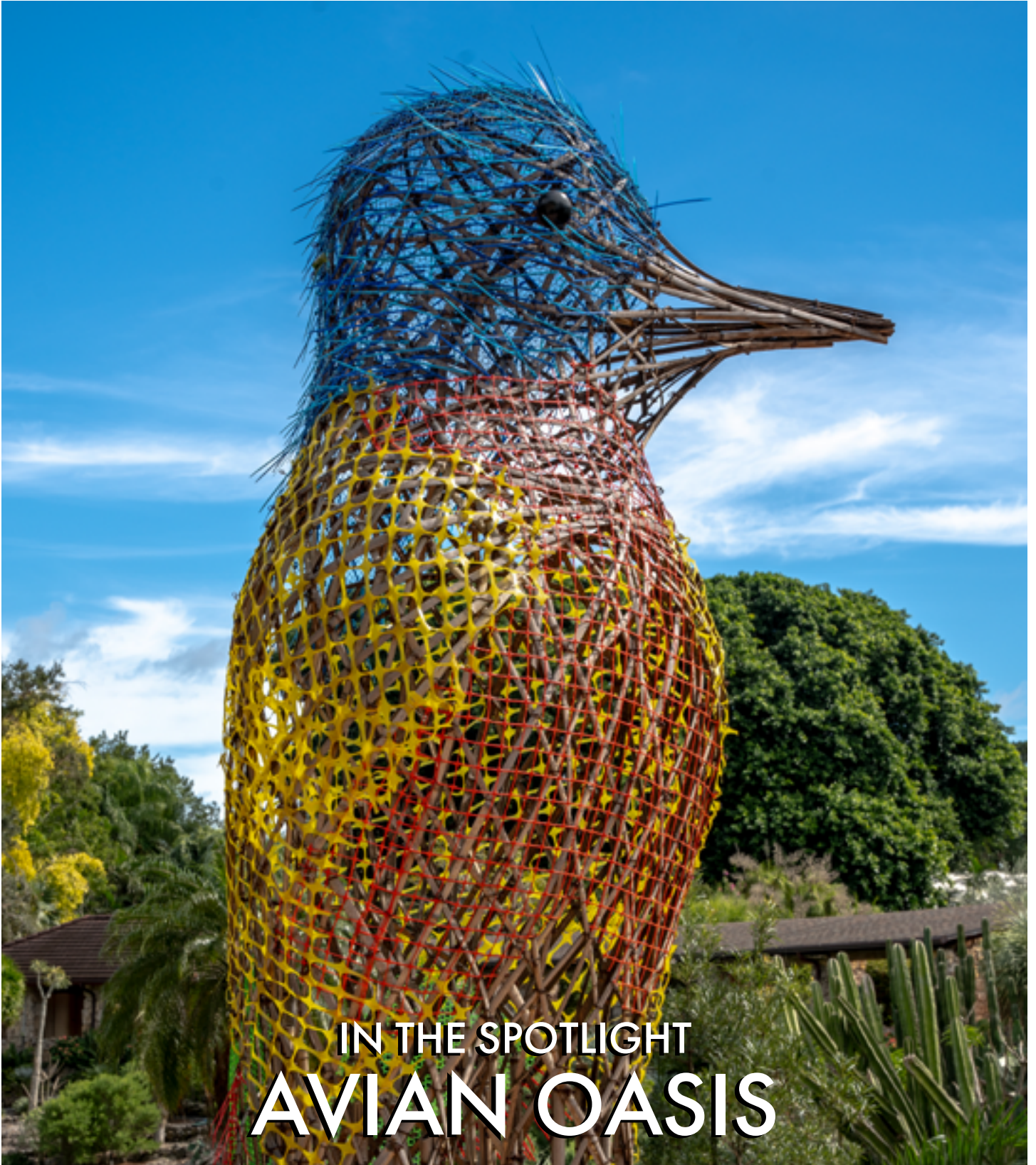


DECEMBER 2023

PINECREST

THE NEWSLETTER OF YOUR VILLAGE GOVERNMENT



IN THE SPOTLIGHT
AVIAN OASIS

A MESSAGE TO THE VILLAGE

FROM THE MAYOR

In Pinecrest’s tradition of bringing monumental art by internationally known artists to Pinecrest Gardens, an exhibition merging artistry, heritage, and nature named Avian Oasis by the Myth Makers is on display now. Visit a world where magnificent bird sculptures, reaching an astonishing 30 feet in height, grace the picturesque landscapes of our backyard botanical garden.

Step into an interactive realm where adventure awaits. Traverse the Peacock’s tail maze, engage in an exhilarating scavenger hunt, or bask in serene moments beneath these colossal avian marvels.

Each sculpture weaves a unique tale, honoring influential figures and pivotal moments. The 15-ft Macaw named **The Greeter** commemorates Parrot Jungle and its founders, Franz and Louise Scherr. **Towering**, the 30-ft Sandhill Crane, pays homage to Ebenezer Woodbury Franklin (EWF Stirrup), an early Miami settler. **Pinky**, the 10-ft Cockatoo, celebrates historian Arva Moore Parks’ dedication while echoing the legacy of Pinky, the high-wire cycling bird.

Other notable avian masterpieces include **The Founding Peahen**, a 25-ft Peacock honoring Julia DeForest Tuttle, and **Hidden in Plain Sight**, the 25-ft Eastern Screech Owl acknowledging Florida Native Peoples’ ancestral homelands. **Sietecolores** (Seven Colors), the 15-ft Painted Bunting, pays tribute to Maurice A. Ferré, esteemed as the modern-day Father of Miami.

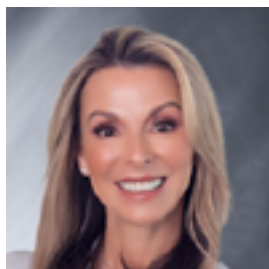
Crafted predominantly from bamboo supplied by the American Bamboo Society, these sculptures are adorned with vibrant repurposed materials, highlighting a fusion of sustainability and artistic prowess.

Witness the convergence of artistry and nature in the awe-inspiring ‘Avian Oasis’ exhibit, a testament to creativity, history, and the splendor of South Florida’s cultural tapestry.

VILLAGE OFFICIALS



Joseph M. Corradino, Mayor
jcorradino@pinecrest-fl.gov



Shannon del Prado, Vice Mayor
sdelprado@pinecrest-fl.gov



Katie Abbott, Councilmember
kabbott@pinecrest-fl.gov



Anna Hochkammer, Councilmember
ahochkammer@pinecrest-fl.gov



Ken Fairman, Councilmember
kfairman@pinecrest-fl.gov

TABLE OF CONTENTS



Front Cover



5 Public Works



10 New Logo



11 Property Taxes



14 Pickle Ball

ON THE COVER

Magnificent Bird Sculptures Take Flight at Pinecrest Gardens

Exhibition Date: November 18, 2023 - May 19, 2024

Join us for a transformative journey into art, history, and nature. Pinecrest Gardens, South Florida’s botanical crown jewel, proudly presents its inaugural ‘Avian Oasis’ exhibit. Experience the grandeur of bamboo-crafted bird sculptures, some towering up to an astounding 30 feet, all set amidst the beautiful landscapes of Pinecrest Gardens.



PINECREST

Pinecrest Municipal Center
12645 Pinecrest Parkway
Pinecrest, FL 33156
305.234.2121
www.pinecrest-fl.gov



PINECREST DID THIS CELEBRATING A YEAR OF SUCCESS



As the end of the year approaches, the Village reflects on the many achievements it has celebrated over the past year. The Village Council and staff work diligently to implement projects and initiatives that bring savings to residents and enrich the community.

The groundbreaking **Potable Water Project** is complete, a testament to the Village's determination and forward-thinking strategy. Over 725 properties now have access to reliable county drinking water and fire hydrants, a major victory that past councils aspired to achieve. Most notably, the burden on Pinecrest residents was significantly lightened through effective financial planning and securing over \$8.5 million in grants.

Committed to financial stability and your well-being, the Village **maintained the same millage rate** that has been in place since 2020. There have also been significant strides in flood plain management, resulting in a notable **15% decrease in flood insurance premiums** for our residents.

This year also included Pinecrest at the top of Niche's list of the **25 best places to live in South Florida**.

In line with being a model city, Pinecrest partnered with Miami-Dade County, with the help of District 7 Commissioner Raquel Regalado to bring two new initiatives to the community. Pinecrest became the first South Florida municipality to pilot a **Composting Program** that offers a free, sustainable solution for waste management. Another new initiative is the **Peacock Mitigation Program**, which takes a humane approach to managing the peafowl population and captured national attention and a front-page story in the *New York Times*.

Pickleball gained traction in the Village (and everywhere else). Residents enjoy the sport so much that the Village opened **new pickleball courts at Coral Pine Park** earlier this year. They continue to be in high demand.

The Pinecrest Police Department was awarded the distinguished **Double Excelsior Award** by the Commission for Florida Law Enforcement Accreditation (CFA). This recognition is the highest level of achievement in Florida law enforcement accreditation, reflecting the department's ongoing dedication to excellence in its service to the community.

The award is presented to agencies that have successfully maintained their accreditation status for six consecutive reaccreditation cycles at three years each. The next cycle will be in 2026 and the department will be up for a Triple Excelsior Award.

The department also launched **the H.E.A.R.T. Program**, conceived by Detective Jeanette Cobo, who works tirelessly to bring hope and support to the homeless community.

Emphasizing inclusivity, the Village unveiled a transformative **Upper Garden Project at Pinecrest Gardens** in November 2022, offering an ADA-accessible playground and enriching programming, ensuring everyone can engage and enjoy.

Pinecrest was awarded the **Arbor Day Foundation 2022 Growth Award** for its continuous efforts to improve the urban forestry program and protect the tree canopy, a nod to its long-standing dedication to environmental preservation.

Several repeat accolades were received this year, including the **Tree City USA designation, Certificate of Achievement for Excellence in Financial Reporting, and the Distinguished Budget Presentation Award**.

Pinecrest thrives not just because of the diligent work of the Village Council and staff but because of you, the residents. Together, we can look forward to another year of progress, prosperity, and community spirit.



PINECREST DID THIS and will continue to **do even more.**

BEHIND THE SCENES PUBLIC WORKS



With great excitement, we share that the Potable Water Project is complete. More than 725 properties that depended on wells now have access to reliable county drinking water and fire hydrants.

KEY ACHIEVEMENTS

- Upgraded Water Quality: Stringent standards for water purity are now met, guaranteeing that every resident can access safe drinking water.
- Enhanced Water Pressure: The modernization of the water system improves pressure, making daily water use more convenient for all households.
- New Fire Hydrants: Enhanced fire safety with strategically placed hydrants to protect our community.

HOW THE PUBLIC WORKS DEPARTMENT POSITIVELY IMPACTS YOU

Here are just a few examples of how the department makes a tangible difference in our community:

- Storm Readiness: It proactively clears and maintains more than 100 miles of drainage lines annually to prevent flooding.
- Road Safety: Last year, the department filled 532 potholes and resurfaced 3.5 miles of road, keeping our streets safe.
- Maintenance: Our team maintains over 50 acres of parkland, ensuring clean, safe, and accessible recreational spaces.

SPOTLIGHT: PUBLIC WORKS DIRECTOR

DAVID J. MENDEZ, P.E.

David Mendez, a civil engineer, proud University of Florida graduate, and former U.S. Army Reserves officer, has served the Village since November 2019. Under David's leadership, the Public Works Department manages vital services that make life in Pinecrest more comfortable and sustainable. From maintaining roads, public spaces, and facilities to managing beautification projects and stormwater sewer maintenance, the public works team works to make the Village resilient and safe. Thank you, David and team, for all that you do.



LONG-TIME PUBLIC WORKS HEROES

- **Cesar Dumaran** – Cesar has been a Village employee for nearly 25 years. As a maintenance technician, Cesar works on a variety of projects and is an essential cog in the public works wheel.
- **Roger Johnson** - Since joining the Village in 2001, Roger's commitment to the upkeep of our public spaces has made Pinecrest more beautiful with each passing year.



LOOKING AHEAD: EXCITING FUTURE ENDEAVORS

Among numerous projects, the Village is improving mobility by extending sidewalks on 100th Street and will soon be constructing new pathways on Red Road and Kendall Drive. Updated school zone signage and pedestrian safety measures, along with traffic studies and improved signal timing, are set to enhance road safety. Environmental stewardship continues with significant drainage improvements, protecting our natural resources. Technological progress is marked by utility upgrades such as the undergrounding of services and a rigorous review process for numerous permits, reinforcing Pinecrest's resilient infrastructure.

Stay informed about these developments by visiting the Capital Improvements Projects webpage at www.pinecrest-fl.gov/CIP.

Public Works Department contact information:

publicworks@pinecrest-fl.gov

305.669.6916

www.pinecrest-fl.gov/publicworks

CAPITAL IMPROVEMENT PROJECTS

STORMWATER

The Village commissioned a Stormwater Master Plan (SMP) in 2014 and adopted the plan in 2015. The adoption of an SMP is needed to obtain funding for projects from all levels of government agencies - county, state, and federal. The SMP analyzes the Village's drainage needs and provides a priority list of 15 basins (one being the highest priority).

The Palmetto Island Drainage Project (Phase I) began in January of this year and was completed on July 3, 2023. The Village also has the five highest priority basins under design. The Village is seeking funding from different agencies to offset the costs. The projects will be constructed according to their priority in the SMP.

SHARED-USE PATHS

As one of the adopted projects of the Village's Transportation Master Plan approved in 2018, the Kendall Drive Shared Use Path (SUP) project will connect Ludlam Road to Red Road. The project consists of removing the existing 5-foot-wide concrete sidewalk and constructing an 8-foot-wide asphalt path designed to accommodate two-way pedestrian and bicycle traffic. The path will be located entirely on the south side of Kendall Drive, with new street trees to beautify and add a canopy.

This project will enhance the SUP network in Pinecrest by adding connectivity to existing and future facilities. Miami-Dade County is considering a SUP along the north bank of the C-2 canal between US 1 and Ludlam, providing another point of connection to this network.

The Village Council authorized the design of the Ludlum SUP and FDOT granted \$1M for its construction. This project will provide a SUP on Ludlum from Howard Drive to the C-2 canal. The Village will advertise to acquire engineering design services, with design expected to begin in January 2024. Design and permitting are anticipated to take up to twelve months.

CORAL PINE PARK PHASE 2

In 2014, the Village Council adopted the Coral Pine Park Master Plan and divided the construction of the approved improvements into two phases. Phase 1, which included a new tennis center and playground, was completed in 2016. Phase 2 of the project is in design. It includes a new multi-purpose room, an updated restroom facility, a walking path, and an exercise station. A bid will be advertised and awarded for the construction phase of this project to begin in early 2024. It is estimated to be completed in 2025.

SUNILAND PARK IMPROVEMENTS

New LED lights are installed in the parking lot. Athletic fields 2 and 3 will have new LED lights retrofitted to the existing sports lighting posts by January 2024. With this installation, the LED light conversion project is complete. The project includes LED lighting for all the athletic fields, basketball courts, a multipurpose room, a gazebo, and exterior building lights. Upcoming projects include the installation of a golf cage in the winter of 2024.



GARY MATZNER PARK

In 2021, the Village Council approved the acquisition of the 3.76-acre site located at the southeast corner of Kendall Drive between Ludlam Road and 65 Court. In May 2023, the Village Council approved the conceptual design for the future park. The final design, as adopted by the Village Council, includes vast open spaces, natural play areas, a covered playground, a walking path, a restroom shelter, parking, preservation of numerous specimen trees, and a park gateway feature. Landscaping includes all native species and a canopy backdrop for families and friends to gather while surrounded by nature. The Village awarded Keith Associates the task of completing construction documents based on the approved conceptual design for this facility. Upon completion of the construction documents, a bid will be advertised for the construction work to begin. Construction for this project should take approximately 12 months.

PINECREST GARDENS LAKEVIEW TERRACE & RAMP RENOVATION

This project entails renovations to the Pinecrest Gardens Lakeview Terrace and ramp due to the failure of the foundation. The repairs will consist of removing mosaic tiles, leveling the floor, and repairing the incline of the entrance ramp. The mosaic tiles will be replaced with the original pattern. The project is currently in the design phase. Once plans are completed and permitted, an invitation to bid will be issued for its construction. This work is estimated to be completed by June 2024.

PINECREST GARDENS CYPRESS HALL DECK

A new terrace and balcony will be constructed outside of Cypress Hall in Pinecrest Gardens. The design of the 835-square foot deck is complete and the construction contract was awarded in October 2023. It is anticipated construction will be completed by March 2024.

POLICE DEPARTMENT'S SCHOOL SPEED CAMERAS



In today’s fast-paced modern world, drivers are surrounded by technology that can be distracting and cause concern. This is especially true around our schools where increased vehicular and pedestrian traffic exists. It is crucial for drivers to be aware of their surroundings and to follow all traffic laws.

Speed cameras have been in use for decades. Given their success in reducing speeds and improving safety, Pinecrest is implementing photo-enforced speed cameras throughout its local school speed zones. The program, which is violator-funded, aims to make schools safer by getting drivers to slow down.

Speed cameras will be active whenever school is in session. Signage notifying the public that a speed enforcement speed detection system is being used, will be visible. The enforcement hours begin 30 minutes before the regularly scheduled school day and continue until 30 minutes after the school day ends. During that time, motorists traveling 11 mph over the speed limit will be fined. The school zone speed cameras combine radar or lidar speed detection technology and high-resolution video technology to capture school zone speed violations. A sworn police officer reviews the video evidence and confirms a speeding violation occurred before mailing a \$100 civil penalty to the vehicle’s registered owner.

The school zone camera program is a force multiplier that augments enforcement capabilities at local schools. This solution will allow officers to dedicate their efforts toward other safety and security concerns beyond the camera’s reach. With school zone speed cameras, officers can focus on preventing criminal activity and responding to medical or police emergencies.

Pinecrest will retain 60% of the collected fines to administer the speed detection system and other local public safety initiatives. The remaining 40% funds local school security initiatives, student transportation, school crossing guard recruitment and retention initiatives, and the Florida Department of Law Enforcement Criminal Justice Standards and Training Trust Fund.

PINECREST’S NEW LOGO

A Symbol of Community Unity, Nature, and Outstanding Governance



Pinecrest has unveiled a striking new logo that beautifully encapsulates the Village’s deep-rooted connection to nature, vibrant community spirit, and unwavering commitment to excellence in government service. Embracing the essence of its name, the logo prominently features a majestic pine tree, cradled by a radiant golden circle that symbolizes not only the sun but also the highest standards of governance.

The focal point of the logo, the towering pine tree, stands as a proud emblem of Pinecrest’s rich natural landscape and its dedication to environmental preservation. Symbolizing longevity, resilience, and prosperity, the pine tree embodies the enduring spirit of the community, standing tall as a testament to its unwavering strength and commitment to nurturing a flourishing ecosystem.

The golden circle, resplendent as the sun, represents the promise of the Village, both in terms of natural vitality and government service. The golden hue signifies enlightenment, hope, and the warmth of community engagement, while also embodying the commitment to exceptional governance and service that Pinecrest takes to heart.

In a statement released by the Village Council, Mayor Joseph Corradino highlighted the significance of the new logo as a representation of Pinecrest’s unique identity and its commitment to excellent government service. “Our new logo embodies the very essence of Pinecrest—a harmonious blend of natural beauty, community vibrancy, and a government dedicated to service excellence,” Mayor Corradino expressed. “It serves as a symbol of our shared commitment to fostering a thriving environment where both nature and people can flourish, complemented by exemplary government service.”

The unveiling of the new logo has ignited a sense of pride and enthusiasm among Pinecrest residents, who have embraced it as an emblem of their shared values, the promise of growth, and the dedication to outstanding government service. As the logo graces official documents, public spaces, and digital platforms, it serves as a constant reminder of Pinecrest’s dedication to preserving its natural heritage and nurturing a welcoming and inclusive community where residents can expect nothing less than excellence in government service.

PROPERTY TAXES

WHAT YOU NEED TO KNOW

Property taxes are the Village of Pinecrest’s main source of revenue in providing day-to-day services and programs to its residents and also assists with capital funding. Did you know that the property taxes collected reflect a percentage of the assessed value of our property? Learn more about how your property is assessed below.

PROPERTY ASSESSMENT

Your property is assessed for property tax purposes by the Miami-Dade County Property Appraiser’s Office, which is responsible for determining the value of real estate properties within the county. The assessment process typically involves several key steps, including:

- Physical inspection: Trained assessors may conduct physical inspections of properties to evaluate their condition, size, and other relevant characteristics.
- Market analysis: The property appraiser’s office assesses market trends, recent sales data, and other relevant factors to determine the fair market value of properties in the area.
- Property characteristics: Factors such as the size of the property, the quality of construction, the age of the property, and any improvements or renovations are considered during the assessment process.
- Comparable properties: Assessors may compare the property in question to similar properties in the area that have recently sold or are currently on the market.
- Property value determination: Based on the information gathered, the property appraiser’s office determines the assessed value of the property, which is used to calculate property taxes.

It’s important for property owners to review their assessments regularly and to understand the factors that may impact the valuation of their properties for tax purposes. If you have questions about your assessment or would like to adjust your taxes to reflect a significant change in your property, (i.e. demolition, fire, etc.), you should contact the Miami-Dade County Property Appraiser’s Office.

SAVE OUR HOMES AMENDMENT

The “Save Our Homes” (SOH) Amendment is a constitutional measure in the state of Florida that provides property tax relief to homeowners by capping the annual increase in assessed property values for homesteaded properties. Enacted in 1995, the amendment aims to offer protection to homeowners from rapid increases in property taxes that may result from escalating property values.



The SOH amendment limits the annual increase in the assessed value of a homestead property to the lesser of 3% or the percentage change in the Consumer Price Index (CPI). This provision ensures that the assessed value of a property does not rise significantly even if the market value increases substantially. Enabling homeowners to maintain their tax savings when relocating within the state, the amendment also allows homeowners to transfer some or all of their accumulated SOH benefits to a new homestead property. When a property changes ownership, the assessed value of the property is reassessed based on its current market value and the SOH benefits are reset. The SOH amendment applies exclusively to homestead properties. Non-homestead properties, such as investment properties or vacation homes, are subject to different assessment rules and may not receive the same tax benefits as homesteaded properties. It’s essential for homeowners to stay informed about the specific guidelines and limitations of the SOH amendment to ensure they benefit from the available tax relief provisions.

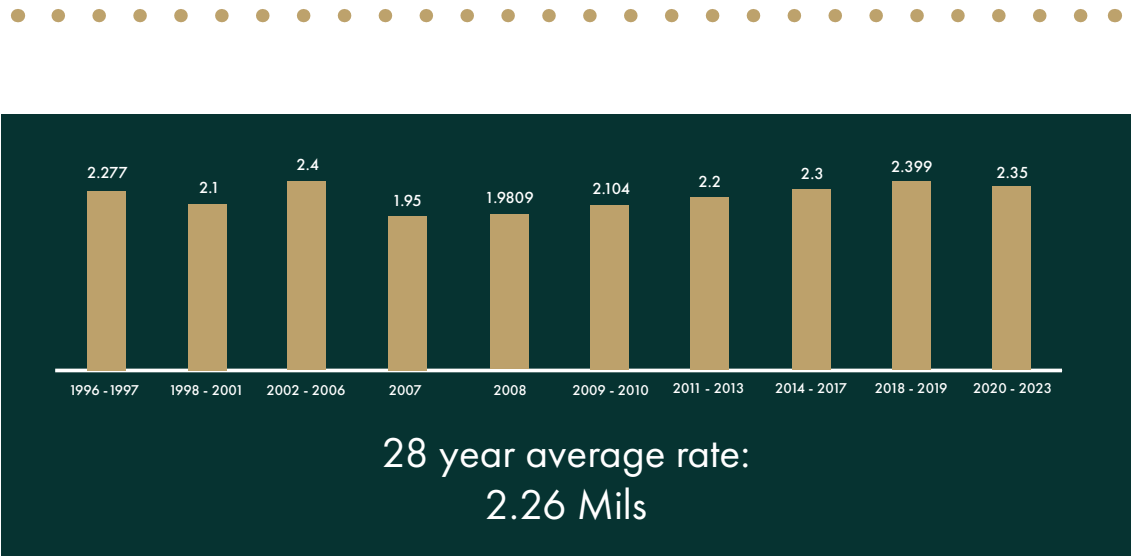
WHAT IS A MILLAGE RATE?

Millage rates are used to calculate property taxes, particularly in the United States. The term “millage” is derived from the Latin word “millesimum,” meaning “thousandth,” and it refers to the amount of tax payable per dollar of the assessed value of a property. One mill is equal to one-tenth of a cent.

Here’s how millage rates work in determining how much you owe in property taxes:

- Assessed Value of Property: The local government assesses the value of your property. This assessed value serves as the basis for calculating property taxes.
- Millage Rate: The local government determines a millage rate, which is the amount of tax payable per dollar of the assessed value of the property. For example, in Pinecrest the millage rate is 2.35 mills, you would owe \$2.35 in taxes for every \$1,000 of assessed property value.
- Calculation of Property Tax: To calculate your property tax, you would multiply the assessed value of your property, after subtracting any tax exemptions, by the millage rate and then divide by 1,000. The resulting figure is the amount of property tax owed.

Property owners also encounter additional levies or special assessments that are added to the property tax calculation. These can include school taxes, county-wide taxes, or special district taxes. Each of these has its own millage rate, which would be added to the overall property tax bill.





KEEPING VOLUNTEERS OUT OF THE “KITCHEN”

Volunteers are an essential part of the success of Parks & Recreation programs. Charlie Bibb, a Pinecrest resident for more than 30 years, is one of these volunteers. When this “new” thing called pickleball began at Suniland Park almost three years ago, he immediately got involved by learning how to play and helping introduce the sport to the community.

“As happens with so many first-time pickleballers, I was instantly hooked. I dove in head first to learn as much as I could about the sport. At the top of my list was how to hit the ball, to learn the rules and the strategy. The biggest challenge for players back then was finding courts to play on,” said Bibb. Realizing that the demand for pickleball was on the rise, Parks and Recreation Director Rob Mattes started planning for the uptick by creating a pickleball program at Suniland Park.

“Our first meeting attracted five or six people. Three months later we had about 40 regulars. Today, we have dedicated pickleball courts at Coral Pine Park, and the sport is still in high demand,” said Mattes.

Bibb volunteered to teach the game (including where the kitchen is on the pickleball court and to stay out of it), run club play, and promote the sport. He became a USA Pickleball Ambassador, and just last year, he became a professional Pickleball Association Certified Professional Coach.

“It’s been a really fun journey to be a part of the growth of pickleball in Pinecrest. My wife Kathleen and I have made so many new friends along the way,” said Bibb. “I am honored to contribute to achieving our goal to ‘enhance the quality of life for all residents’ in Pinecrest and our neighboring communities. Let’s go Pinecrest!”

Several aspects make pickleball popular. It is accessible for people of all ages and skill levels to learn and play. All that’s needed to play is a paddle, some pickleballs, and a court. Pickleball is a social sport that can be played both casually and competitively. It’s a great way to meet new people, build friendships, and maintain an active and healthy lifestyle.

Find out more about the Village’s pickleball programs and how to reserve a court at www.pinecrest-fl.gov/parks.

Pinecrest Community Center
5855 Killian Drive
Pinecrest, FL 33156
305.284.0900
parks@pinecrest-fl.gov



PARKS & RECREATION PROGRAMS & EVENTS



Parks, events, and the community overlap in many ways. Each offers a distinct benefit and has interdependent elements that enhance the community's quality of life, culture, and economic well-being. These elements create a dynamic ecosystem that enriches the community's social fabric and overall vitality.

The Parks and Recreation Department strives to provide well-rounded offerings to meet the needs of the Village's vibrant community. Each park program, community event, and facility improvement is designed to bring the community closer together.

What is it about parks and recreation that brings so many people together? Common interests, new experiences, curiosity, and nature. In March of each year, the department hosts the **Pinecrest Car Show**. The event typically attracts some 2,000 participants with nearly 150 classic cars on display. Visitors spend the day swapping stories about cars. People who would have otherwise not met, have sparks of connection based on their love of cars.

In February, the department hosts the much anticipated and always sold-out, **Daddy-Daughter Valentine's Dance**. Countless families have created special memories throughout the years by attending this event. Fathers get to spend one-on-one time with their daughters dancing, taking photos, and enjoying each other's company.

Park programming benefits are far-reaching. They contribute to the health and well-being of the community. Green spaces help improve air quality, reduce urban heat index, and support local wildlife. They offer a space for people to socialize, connect, and build a sense of community, an essential component of good mental health.

There is an economic impact that reaches beyond the parks and into businesses. The community benefits when the t-ball team packs up for the evening and meets at the ice cream shop to celebrate their game. Or when tennis players fuel up with a cup of coffee before their match. Local businesses thrive when communities have a healthy parks and recreation system.

For more information about events hosted by the Parks and Recreation Department, visit www.pinecrest-fl.gov/parkevents.

PARKS & RECREATION FITNESS MADE EASY

Fitness can be beneficial without being overwhelming. It is possible to make fitness a part of a modern lifestyle. The demands of work, family, and other responsibilities often leave little room for self-care, but neglecting health can have unwanted outcomes. A healthier lifestyle can be achieved and maintained by implementing small changes.

- Drink more water – staying hydrated helps your immune system, regulates body temperature, lubricates and cushions joints, and protects sensitive tissues.
- Exercise regularly – Just 30 minutes of activity five days a week makes a significant impact.
- Choose healthier snacks – Swap out processed foods with nuts, fruits, and vegetables.
- Prioritize sleep – Experts recommend that adults sleep between seven and nine hours per night.
- Set fitness goals – Start with small, attainable goals and celebrate successes.

It's easy to add physical activity with Parks and Recreation programs and parks. One can join the Pinecrest Community Center Gym, enjoy one of the lively group fitness classes, work with a personal trainer, and participate in **#FitCrest** Friday activities. **#FitCrest** Friday is every third Friday of the month and includes:

- Free pickleball at Coral Pine Park from 8 to 11 am
- Teen basketball and pickleball at Suniland Park from 6 to 8 pm
- All-day access to the Pinecrest Community Center Gym

Fitness does not have to be serious or boring. Join us for the **FitCrest 5K** on Saturday, January 6, 2024, at Evelyn Greer Park. Tickets are available now on Eventbrite. The holiday season is here. Give the gift that keeps on giving. Buy a class pack or gym membership for your loved ones.

Visit pinecrest-fl.gov/fitness for more information about our upcoming FitCrest 5K, Pinecrest Community Center Gym membership options, and our fitness class schedule.



GARDENING WITH KIDS

HOW GARDENING ENRICHES THEIR LIVES



Gardening is a great way for children to learn about the natural world, eat healthy foods, and get exercise. But, did you know that gardening can also have a positive impact on the brain, body, and soul? At Pinecrest Gardens we celebrate these benefits through programs, plant displays, and opportunities to engage.

GARDENING ENGAGES BRAIN

Gardening is a hands-on activity that engages multiple senses and areas of the brain. Children learn about science, math, and problem-solving as they plant seeds, water plants, and harvest produce. These tasks also develop fine motor skills and coordination.

Studies have found that children who participated in gardening projects scored higher in science achievement than those who did not. It has long been proven that gardening helps to improve attention and focus. Contact with soil can actually boost mood and reduce anxiety. Soil contains wonderful bacteria that produce serotonin, a neurotransmitter that helps to regulate mood.

At Pinecrest Gardens, we offer opportunities for kids to get their hands dirty and learn the basics of gardening. In our Little Lizards program, kids will join our education team for hands-on fun, activities, and learning. Some monthly topics include garden harvest, the five senses, flowers, pollinators, and trees. Visit www.pinecrestgardens.org to learn more about these, and other garden-based programs.

GARDENING BENEFITS THE BODY

Gardening is a great way for children to get exercise. They burn calories as they dig, water, weed, and harvest plants. Gardening also helps to strengthen muscles and improve balance.

On your next visit, stop by the Learning & Sensory Garden and use our old-fashioned hand pump to help nourish the seasonally appropriate plants growing there. Throughout the year, we have changed plantings including sensory-friendly, aromatic, and edible gardens. Slow down and engage your senses here, and soak in the benefits of the Garden.

Aside from the Learning & Sensory Garden, Pinecrest Gardens boasts shady walking trails and an all-inclusive playground in the midst of a native hammock. People of all abilities can comfortably enjoy the benefits of nature without feeling overwhelmed by the task of gardening.

GARDENING NOURISHES THE SOUL

Gardening is a mindful activity that can help children to relax and de-stress. It is a great way for them to connect with nature and appreciate the beauty of the world around them.

Gardening can also teach children about responsibility and hard work. When they plant a seed and watch it grow into a plant, they learn that their actions have consequences. They also learn that it takes time and effort to achieve results.

Visiting botanical gardens, like Pinecrest Gardens, throughout the seasons allows children to connect with nature. They will love visiting time and time again to check on their favorite tree or flowering bush. Building memories with your family in the Gardens is a perfect opportunity to expose your kids to nature without committing to maintaining a garden on your own. We hope to see you in the coming months, to soak in all of the beauty and benefits Pinecrest Gardens has to offer.

Find out more about Pinecrest Gardens visit www.pinecrestgardens.org.

Pinecrest Gardens
11000 Red Road
Pinecrest, Florida 33156
305.669.6990
info@pinecrestgardens.org



EDUCATION IN THE GARDENS

Pinecrest Gardens offers exciting educational opportunities for learners of all ages. Embark on a journey of discovery, creativity, and growth with new programs starting January 2024.

Papertree House proudly presents a transformative 8-week semester starting January 8. Created for homeschoolers, the program takes full advantage of Pinecrest Garden amenities to offer a unique blend of activities. From dynamic puzzles and brain games to art and science through exciting animal encounters and physical education via nature play – children learn through play and curiosity. Every Wednesday, from 9 am to 2 pm, the Garden buzzes with innovation and creativity, making education an adventure not to be missed.

For curious young minds ages 4 to 12, the bi-weekly afterschool science and art program encourages themed learning. Meeting on Wednesdays from October through May, **Little Lizards** explores monthly themes such as Art in the Garden, Flowers, and Pollinators. It's a space where reading, exploration, creation, and imagination come together to foster a love for learning. Best of all, Little Lizards is **free** with Gardens admission, making it accessible to all budding scientists and artists.

Dive into the wonders of nature with enriching **field trip options**. Guided or self-guided, Pinecrest Gardens offers a variety of curricula tailored for individual group interests. Participants are immersed in the beauty of the Gardens and have access to activities such as fun in the splash-n-play, mini zoo visits, playground adventures, and leisurely picnics. Booking a field trip is just a click away but act fast – spring slots fill up quickly. For more information, visit www.pinecrestgardens.org/fieldtrip.

Designed for adults, **Curious Gardener Workshops** make for a fun and creative evening where one can learn hands-on, make friends, and have a drink while in a beautiful space. From sip & create painting workshops to the art of preserved flowers and bonsai 101, each workshop, held every third Thursday of the month, promises an evening of discovery with a botanical twist. Enjoy a complimentary beverage as you explore new skills and unleash your creativity.

Save the Date for Summer Camps at Pinecrest Gardens. Dive into the world of science with our STEAM camp for ages 4 to 9, or enroll your toddler in our half-day toddler camp in partnership with the Pinecrest Dance Project. Pinecrest Gardens campers enjoy exclusive access to the mini zoo, splash 'n play, playground, and more. For more information about summer camps, visit www.pinecrestgardens.org/camps.

At Pinecrest Gardens, education is a remarkable experience. Join us in celebrating the joy of learning amidst the beauty of nature. Embrace the opportunities, unlock potential, and enjoy the educational adventure. www.pinecrestgardens.org.





WHERE ART, CULTURE, AND FAMILY FUN FLOURISH

Nestled in the heart of Pinecrest, Pinecrest Gardens stands as a beacon of artistry, creativity, and community engagement. Throughout the year, this botanical beauty hosts a variety of events that celebrate art, design, culinary delights, and family-centric activities.

The **Pinecrest Gardens Art & Design Fair**, an esteemed annual tradition, recently commemorated its 20th Anniversary with an expansion and a grand rebranding. Renamed the Art & Design Festival, this two-day extravaganza is held on January 20 and 21, attracting over 5,000 thousand attendees and drawing in 50 diverse artists, designers, and artisans.

This year's festival showcases independently juried art, collective arts, nonprofit exhibitors, live music that reverberates through the gardens, and captivating performances that will entertain attendees. The event became a testament to the unwavering spirit of creativity and innovation that pulses through Pinecrest Gardens.

As winter transforms into spring, Pinecrest Gardens turns up the heat with its **9th Annual Chili Cook-Off** on March 2. Chili enthusiasts and culinary adventurers descend upon the Gardens to indulge in a flavorful experience that tantalizes taste buds and ignites a fierce yet friendly competition among professional cooks and daring amateurs.

Attendees revel in live country music, the rhythm of line-dancing, thrilling mechanical bull rides, a display of classic cars that takes visitors down memory lane, and adrenaline-pumping eating contests. The highlight, of course, is the chance to sample chili creations crafted by the best chili cooks from the International Chili Society (ICS).

Spring blooms in full splendor on April 6 as Pinecrest Gardens welcomes families to immerse themselves in the wonders of nature and art during the **Family Garden Day**. The theme centered around the mesmerizing Avian Oasis monumental art exhibition, featuring larger-than-life avian sculptures that dot the landscape.

From vibrant vendors to engaging garden partners, lively performances, and an array of avian-themed activities, the day is a delightful medley of entertainment and education for children and adults alike. Families will revel in a celebration that honors the rich diversity of Pinecrest Gardens.

As the seasons change and new events unfold, Pinecrest Gardens remains a treasured destination, inviting locals and visitors alike to partake in its tapestry of artistic expression, culinary adventures, and enriching family-friendly experiences. Keep an eye on the website for updates on upcoming events that promise to stir the senses and ignite the imagination. www.pinecrestgardens.org.





PINECREST

Village of Pinecrest

12645 Pinecrest Parkway

Pinecrest, FL 33156

PRESORTED
STANDARD
U.S. POSTAGE
PAID
Permit #2121
Miami, FL

PINECREST 9 PM ROUTINE

SLEEP SAFE WITH PEACE OF MIND AT NIGHT BY FOLLOWING THIS SIMPLE CHECKLIST.

- Remove all valuables from your vehicle
- Lock vehicle doors and windows
- Close overhead garage doors
- Close & lock exterior windows and doors
- Turn on exterior lights
- Set your home security alarm on
- Have a restful sleep knowing you completed the list

SEE SOMETHING, SAY SOMETHING.

REPORT ANY SUSPICIOUS ACTIVITY, CALL 911

FOR NON-EMERGENCIES CALL 305.234.2100 OR VISIT WWW.PINECREST-FL.GOV/POLICE.