



PINECREST
FLORIDA

CITIES OF HAPPINESS INITIATIVE



FIND YOUR **bē**

Dear Village of Pinecrest Administrators and Citizens,

It is with great enthusiasm that we present this comprehensive report as part of the Cities of Happiness Initiative (CHI). As the Village of Pinecrest continues to thrive as a vibrant and dynamic community, our goal is to offer valuable insights that will support the ongoing pursuit of collective happiness and well-being for all residents.

This comprehensive report reflects the diligent efforts of our team, grounded in extensive research, community feedback, and firsthand observations within your community, it explores the key factors that influence residents' well-being, satisfaction, and happiness. The report encompasses both our research findings and actionable recommendations, providing a holistic approach to enhancing the quality of life in the Village of Pinecrest. We share proposed solutions, driven by the community's input, to further strengthen the Village of Pinecrest's sense of belonging and happiness.

The report is divided into two main sections for a clear, structured presentation:

- **Part 1: Research Findings**
This section outlines key insights from our research, highlighting the factors that impact happiness and well-being in Pinecrest, based on both quantitative and qualitative data.
- **Part 2: Recommendations**
In this section, we offer actionable strategies and solutions, informed by the research findings and community feedback, to enhance happiness and well-being across the Village of Pinecrest.

Together, these findings and recommendations provide a roadmap for fostering long-term happiness and guide Pinecrest as it continues to evolve into an even more vibrant, thriving, and connected community.

With Love, Joy, & Gratitude,

Luis Miguel Fallardo & Ellen Campos Sousa



PART 1

Research Findings

Summary of Research Findings - 1

Pinecrest is seen by its residents as a harmonious blend of suburban tranquility and modern convenience, defined by a strong sense of community and safety. The village is treasured for its top-rated schools, peaceful parks, and family-friendly atmosphere, offering a retreat from the energy of nearby Miami. While Pinecrest's cultural identity continues to evolve with growing diversity, it remains grounded in traditions that encourage neighborly connections and active community involvement. Events like farmers markets and artistic festivals reinforce this communal spirit, fostering a deep sense of belonging among residents. Despite demographic changes and rising property values, Pinecrest is still regarded as an inclusive, secure, and desirable place to live, where the balance between a peaceful lifestyle and access to urban amenities is thoughtfully preserved.

Happiness in Pinecrest is shaped by strong community ties, a serene natural environment, safety, and access to essential amenities. Residents appreciate the close-knit nature of the community, active participation in local events, and the tranquil green spaces that contribute to a sense of calm. Safety remains a cornerstone of well-being, with effective law enforcement and a welcoming, inclusive atmosphere enhancing the sense of belonging. Quality of life is further enriched by accessible parks, recreational opportunities, and a thriving arts and cultural scene. While some residents seek more diverse activities, improved transportation, and additional amenities, there is an overall sense of contentment and opportunity for further growth in community happiness.

The community of Pinecrest is navigating a range of challenges that reflect its evolving dynamics and modern complexities. Key areas of focus include addressing traffic congestion, managing infrastructure demands, and balancing development while preserving the village's charm and green spaces. Residents are advocating for responsible growth to avoid overdevelopment and ensure affordability, especially for retirees. Enhancing safety and security remains a priority, with calls for improved crime prevention measures and stronger communication with local authorities. Additionally, environmental concerns, such as wildlife disturbances and sanitation, highlight the need for thoughtful planning to maintain Pinecrest's high quality of life.

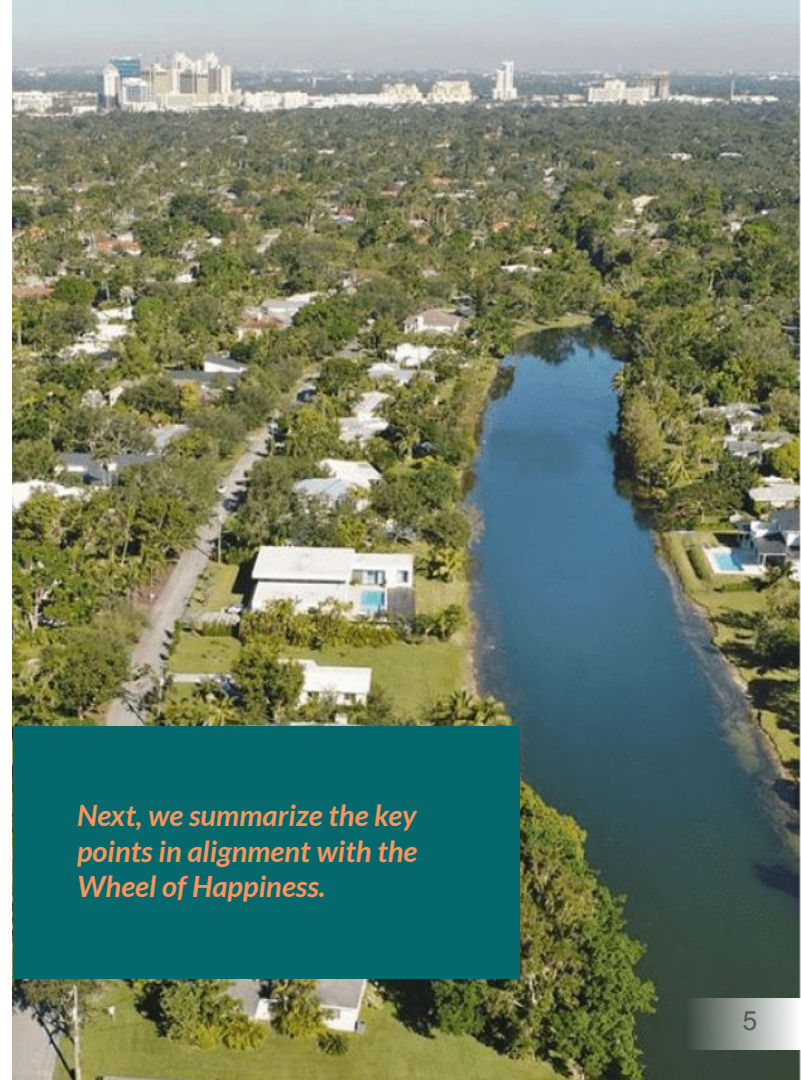
In Pinecrest, diverse perspectives on governance and transparency present opportunities for improvement, with a focus on enhancing access to public information and ensuring consistent enforcement of local codes. Strengthening communication and community engagement is essential, as some residents feel disconnected from local decision-making. Increasing participation in council meetings and aligning programs more closely with community preferences can help foster a more inclusive approach. Additionally, as Pinecrest's population ages, there is a growing need for enhanced support for active aging and independence. Strategic planning around financial sustainability and budget allocation will be crucial to maintaining essential community services and driving infrastructure improvements for the future.

Summary of Research Findings - 2

Pinecrest residents have offered a wide array of suggestions to improve community life, focusing on safety, infrastructure, social engagement, and environmental sustainability. They emphasize the need for stronger communication about safety issues, improved emergency response systems, and a more visible police presence. Social engagement ideas include increasing diverse programming, promoting civic participation, and creating spaces that foster community connections. Residents also highlight the importance of inclusive communication channels and better accessibility to local governance to ensure that every voice is heard and involved in decision-making processes.

In terms of infrastructure, residents suggest improvements in public transit, utility infrastructure, and mobility solutions, advocating for expanded bike paths and safer pedestrian zones. There is also a strong desire for enhanced recreational amenities like sports courts, dog parks, and non-commercial community spaces. Environmental concerns include calls for better maintenance of green spaces, the management of invasive species, and the implementation of sustainability initiatives like energy-efficient infrastructure and recycling programs. These initiatives aim to foster a more eco-conscious and resilient community.

The collective vision presented by residents underscores a deep commitment to Pinecrest's future, focusing on a balance between development and preservation of the community's unique character. Their recommendations highlight the importance of transparent governance, proactive community-building, and sustainable growth. Through collaboration and innovation, these suggestions offer a roadmap for maintaining Pinecrest as a safe, inclusive, and vibrant community that prioritizes the well-being of all.



Next, we summarize the key points in alignment with the Wheel of Happiness.

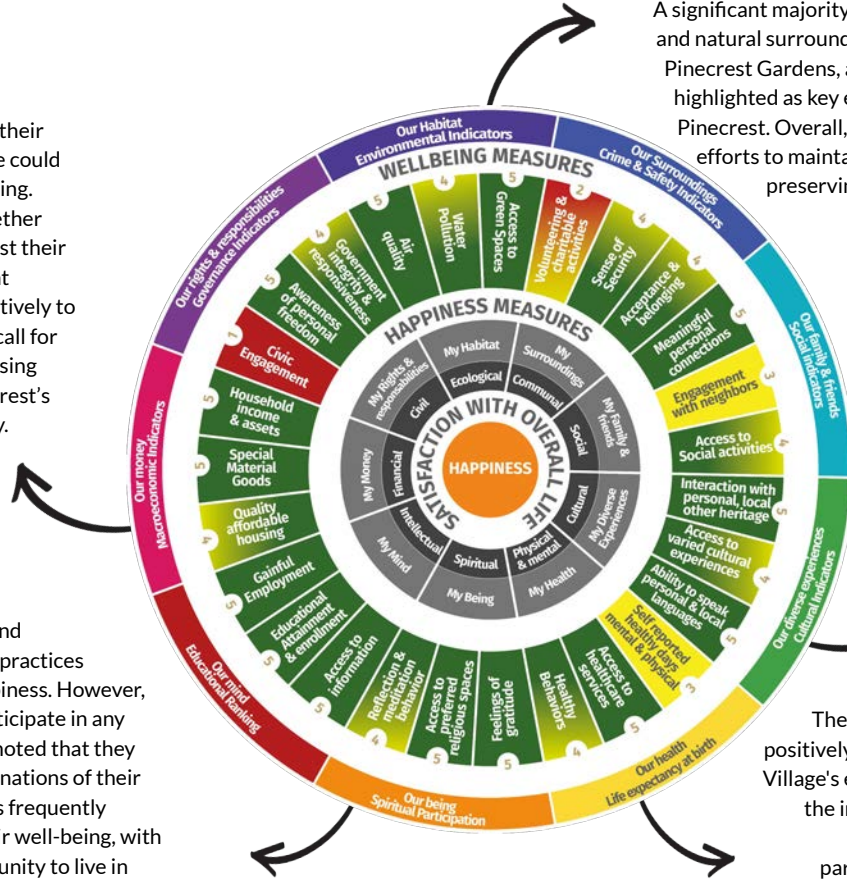
Summary of Research Findings -3

Financial

Most respondents are satisfied with their financial situation but feel the Village could do more to improve financial well-being. While some are uncertain about whether owning more possessions would boost their happiness, many believe their current material possessions contribute positively to their overall satisfaction. Many also call for senior support, such as reducing housing taxes. Notably, 67% agree that Pinecrest's services are worth the taxes they pay.

Spiritual

Most residents identify as spiritual and recognize that religious or gratitude practices significantly contribute to their happiness. However, 26.1% reported that they do not participate in any such practices. Many residents also noted that they have easy access to religious denominations of their choice. The expression of gratitude is frequently highlighted as a crucial aspect of their well-being, with many feeling thankful for the opportunity to live in Pinecrest.



Ecological

A significant majority of residents believe that environmental factors and natural surroundings play a crucial role in their happiness. Parks, Pinecrest Gardens, and the area's natural landscapes are frequently highlighted as key elements that contribute to the unique charm of Pinecrest. Overall, residents express satisfaction with the Village's efforts to maintain and enhance the environment, particularly in preserving native vegetation and fostering green spaces.

Cultural

A majority of residents feel confident in their ability to communicate in their native language, emphasizing the value of linguistic diversity within the community. Most also believe that access to cultural experiences plays a crucial role in their happiness, highlighting the importance of cultural engagement in promoting well-being. Many residents are satisfied with the Village's efforts to promote cultural events, and they view interactions with people from different cultures as a strength that enhances Pinecrest's sense of community. Events like concerts and farmers' markets were particularly praised for fostering cultural exchange and community connection.

Physical and Mental

The majority of residents view their physical and mental health positively. However, it is notable that only 52% are satisfied with the Village's efforts to promote community health. Residents emphasize the importance of having access to exercise opportunities in the community, yet many feel that more activities are needed, particularly for seniors. There is a strong call for an increase in mental and physical health activities within Pinecrest.

Summary of Research Findings -4

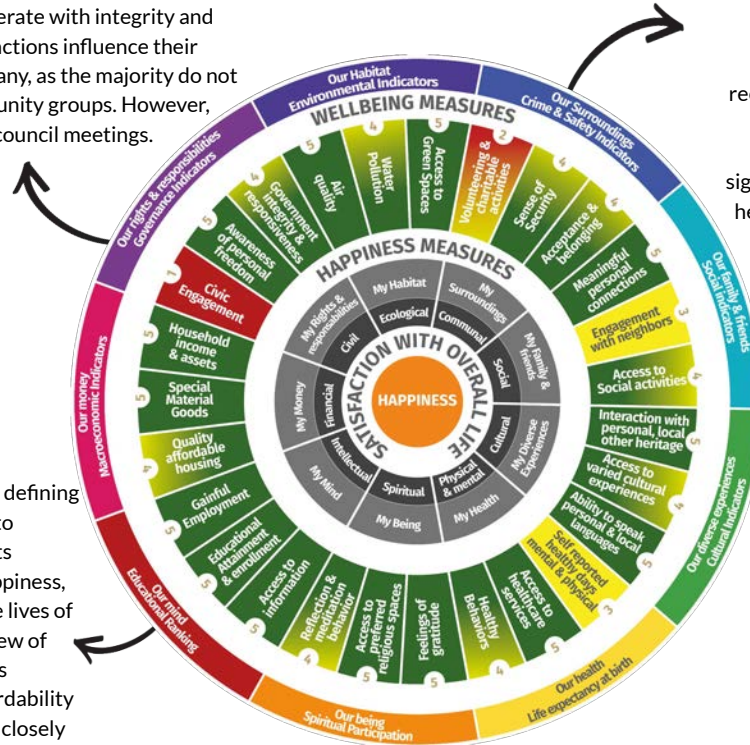
Civil

70% of residents believe Village officials and staff operate with integrity and honesty. While most acknowledge that government actions influence their happiness, civic engagement plays a lesser role for many, as the majority do not participate in activities like public meetings or community groups. However, there is a call for a larger, more welcoming space for council meetings.

Overall, residents are satisfied with Village governance, feeling heard, valued, and aware of their rights and freedoms. Despite this, they seek greater transparency and stronger code compliance. While residents appreciate the Village's communication efforts, many feel that important information is often missed, highlighting the need for improved outreach

Intellectual

The quality of schools was frequently mentioned as a defining feature of Pinecrest's identity and a key contributor to residents' sense of happiness. Only 9% of respondents indicated that education is not important to their happiness, highlighting the significant role education plays in the lives of Pinecrest residents. Despite the generally positive view of education in the community, only 58% of respondents expressed satisfaction with both the quality and affordability of local schools. The quality of education, however, is closely tied to the well-being of teachers, who play a crucial role in shaping students' experiences. Ensuring the mental and physical well-being of educators should be a priority, as it directly impacts the quality of education and, consequently, the happiness and success of students. By focusing on the needs of teachers, the community can help sustain high educational standards and foster a healthier, more supportive learning environment.



Communal

Community plays a vital role in shaping Pinecrest's identity and the overall happiness of its citizens. While most residents feel connected, safe, and valued, a notable portion expressed uncertainty about their sense of community. Though they recognize the Village's efforts to foster stronger community ties, many are calling for more tangible actions. Nearly half of respondents reported never having volunteered, yet there is significant interest in doing so, with many offering suggestions to help reconnect and strengthen the community. Safety remains a key factor in residents' well-being, but nearly one-third were unsure about their sense of security in Pinecrest. Many have requested a more visible police presence and more timely, transparent communication about local crime.

Social

Social activities and neighborly engagement are seen as key drivers of happiness in Pinecrest. While the community is often described as connected, recent changes—particularly an influx of newcomers—have diminished this perception for some. A common theme among residents is the need for initiatives to help reconnect the community, with many offering suggestions for how this can be achieved. Although residents appreciate the social events Pinecrest provides, they emphasize that there is room for more activities catering to different age groups and interests

Summary of Research Findings - 5

Intellectual (cont.)

Beyond education, schools influence families and the broader community, making them critical for shaping the future. In discussions with school administrators, the focus was on the challenges of time constraints and inadequate mental health resources for both students and staff. Administrators highlighted the heavy workloads that limit teachers' participation in wellness programs and the overburdened mental health staff who cannot meet the rising demand for student support. These issues are compounded by inconsistent availability of mental health coordinators and an overload of school programs that lack adequate staffing.

To address these challenges, administrators proposed several solutions aimed at reducing stress and promoting well-being among teachers and students. They suggested providing more flexible schedules for teachers, incorporating wellness activities into the school day, and offering access to faculty gyms or community fitness centers. Additionally, they recommended the use of mindfulness apps and introducing therapy animals to schools to alleviate stress. Most importantly, they called for hiring more mental health personnel to ensure students receive the consistent support they need.

In summary, school administrators emphasize the need for more time and resources for teacher self-care, mental health support, and wellness activities. Their suggestions include increasing access to fitness facilities, mental health apps, and therapy animals, while addressing the shortage of mental health personnel. These solutions aim to create a healthier, more supportive environment for both staff and students, ultimately enhancing the overall well-being of the school community.

Students emphasized the importance of social connections, personal achievements, and inner peace as key contributors to their happiness, while also highlighting the pressures stemming from demanding academic schedules.

They suggested revising educational policies to reduce stress, such as lowering homework loads, improving exam scheduling, and incorporating more breaks to foster relaxation and social interaction. Students also expressed appreciation for Pinecrest's family-friendly environment but called for more local activities and spaces to enhance social engagement. Additionally, they pointed out a lack of wellness strategies in schools, advocating for mental health practices to be integrated into the daily curriculum.

They stressed the value of community involvement and recommended that Pinecrest offer more local businesses and youth-centered spaces to encourage social connections. They were actively engaged in volunteer work and expressed a desire for more cultural events and gathering spots like parks and cafés. Regarding their educational experience, many students reported feeling significant pressure from rigorous academic demands, especially around AP exams, and suggested introducing well-being sessions, such as meditation or relaxation exercises, into the school day to help manage stress.

In summary, students proposed several reforms, including integrating mental health practices into school routines, enhancing community interaction through more social venues, and revising academic policies to alleviate stress. Their recommendations aimed to create a more supportive, balanced environment both in school and in the broader Pinecrest community, fostering overall well-being and social connectivity.

Methodology

Embarking on the transformative journey of the Cities of Happiness Initiative (CHI), our methodology serves as the compass guiding our exploration. Grounded in the belief that the pursuit of collective happiness is both visionary and pragmatic, the methodology aims to understand the cultural fabric of cities and assess the diverse nuances of residents' happiness and well-being. Specifically, the methodological approach utilized in this comprehensive analysis of the Village of Pinecrest—addressing its identity, sense of happiness, challenges, and solutions—involved a structured and rigorous method designed to capture diverse perspectives and experiences.

For the quantitative component, an online survey was administered via the PlayVerto platform, known for its gamified features. PlayVerto aligned with the project's objectives by making the survey experience more interactive and enjoyable, facilitating smooth data collection. The Village of Pinecrest distributed the survey during June and July through multiple channels, including the Village magazine, social media, and email campaigns. We received 319 valid responses from a population of 17,961 residents (according to World Population Review). While the ideal sample size for a 95% confidence level with a 5% margin of error is 377, the 319 responses we collected still provide reliable, statistically significant results. With a margin of error of approximately 5.5%, our findings offer a solid foundation for drawing accurate and meaningful conclusions.

For qualitative data collection, from March to May, we conducted over 30 focus group sessions with key stakeholders, including residents, Village administrators, school administrators, and students. These sessions provided a wealth of qualitative data, offering deeper insights into perceptions of happiness and well-being in Pinecrest. Additionally, we collected further data at the Pinecrest Farmers Market, engaging directly with the community in an informal yet informative setting. The focus groups enabled the sharing of diverse viewpoints on a wide range of topics. The analysis of this data was conducted using narrative analysis techniques. This approach involved examining the stories and experiences shared by participants in the focus groups. By delving into these narratives, we identified recurring themes, patterns, and underlying issues that contribute to the challenges faced by Pinecrest. The narrative analysis allowed us to go beyond data points, providing a deeper understanding of the lived experiences, perceptions, and emotions of our community members. It enabled us to uncover the complexities, nuances, and interconnections between different challenges, paving the way for holistic and informed recommendations.

This methodological approach offers a comprehensive and nuanced perspective on residents' happiness and well-being and their perceptions of the Village of Pinecrest. It reflects the voices, concerns, and aspirations of residents, serving as a valuable resource for stakeholders, policymakers, and community leaders seeking to enact meaningful and positive changes.

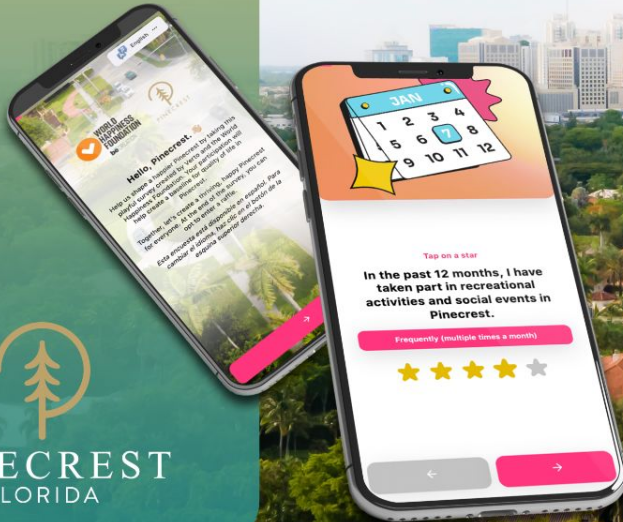
We invite you to engage with the findings and recommendations in this report, as your insights and contributions are vital to shaping the future of the Village of Pinecrest and ensuring a thriving and resilient community for generations to come.



Play Verto Survey Quantitative

Community Happiness Report

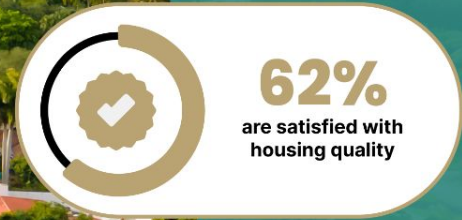
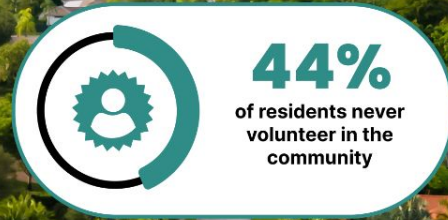
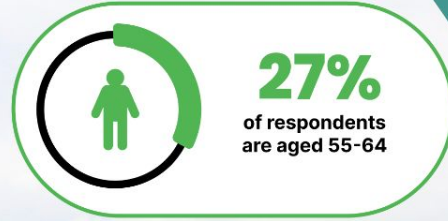
This report provides an analysis of the well-being of the Pinecrest community based on data gathered through surveys and the application of the Wheel of Happiness framework.



319

residents
participated in
the survey

59% Completion Rate



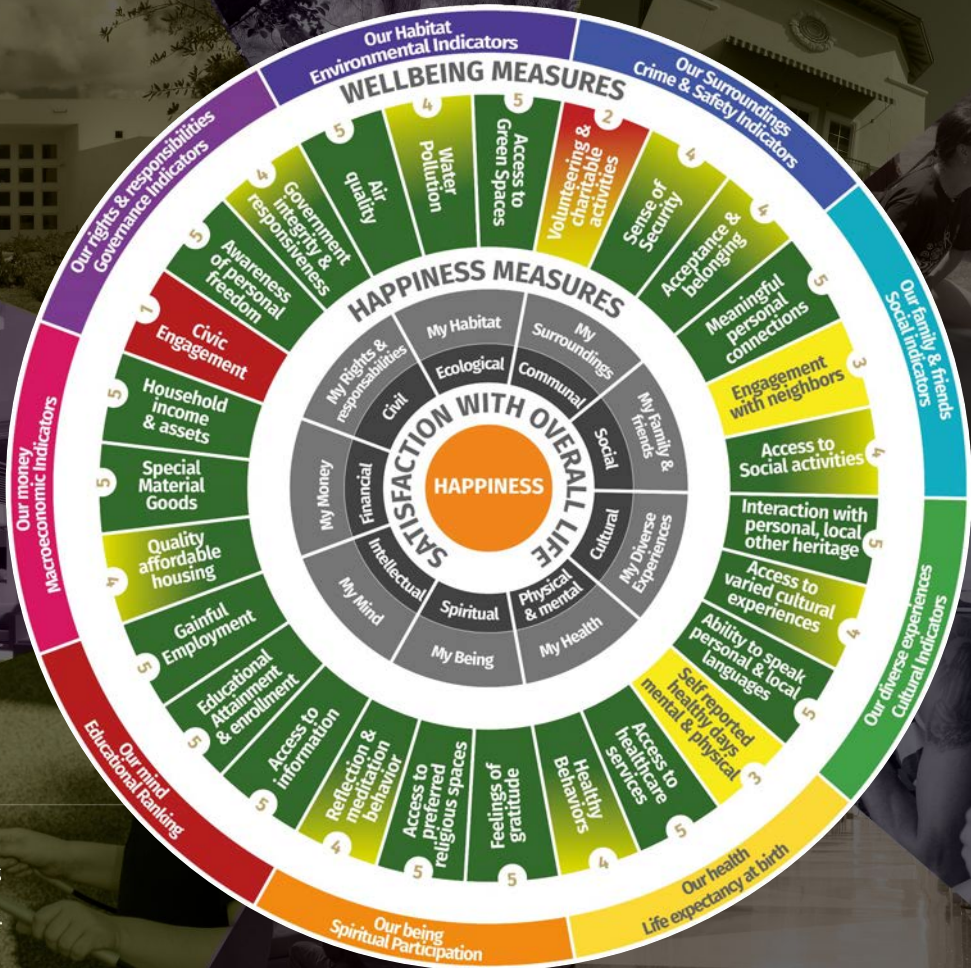
Linking data to the Wheel of Happiness

The Wheel of Happiness Framework

The Wheel of Happiness framework encompasses nine spheres: Ecological, Communal, Social, Cultural, Physical and Mental, Spiritual, Intellectual, Financial, and Civil.

Each sphere represents a crucial aspect of life influencing overall well-being. This framework guides our understanding of how various factors interconnect to shape happiness in Pinecrest.

Circular Wheel Diagram:
Each sphere is represented visually in the wheel, highlighting their interconnected nature and impact on community well-being.



Deep Dive into the Wheel of Happiness Spheres

We are going to deep dive into some of the remaining spheres of the wheel.

Spiritual

87% consider themselves spiritual, and 40.4% practice meditation, reflection, or prayer regularly.

Social

Social connections, particularly with neighbors, are essential, as **66% of residents** believe that interacting with their neighbors enhances their happiness. Strengthening these social bonds can help reduce loneliness and increase overall community satisfaction.

Ecological

A strong ecological foundation supports the well-being of residents, as evidenced by the fact that **92% agree** they have access to green spaces, 84% are satisfied with the air quality, and **68% express satisfaction** with water quality in their community, highlighting the direct influence of environmental quality on health and happiness.

Communal

Community participation and safety perceptions are vital for well-being, yet with **44% of residents** never volunteering and **29%** uncertain about their safety, increasing engagement and addressing safety concerns could greatly enhance communal happiness.

- *Social Participation:* **49.3% of residents** participate in social or recreational activities at least occasionally, but nearly half reported limited or no involvement in community activities like volunteering (44% have never volunteered).
- *Happiness Influencers:* Social activities and neighbour engagement are key happiness drivers, with **69.8%** and **70.4%** respectively believing they affect happiness "a lot." **76.2%** felt that acceptance and belonging had a major impact on their happiness.

Civil

Trust in government plays a key role in overall satisfaction, with 63% of residents expressing contentment with the clarity and timeliness of communications. When it comes to city activities, participation remains mixed, with 30.7% participating sometimes, but **25.6%** participating rarely and **21.4%** not at all.



92%
agree they have access to green spaces

16%

are concerned or not satisfied about air quality



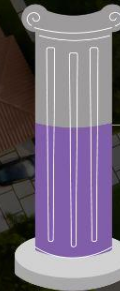
29%

of participants are uncertain about their safety



66%

feel that engagement with neighbors enhances their happiness



63%

of respondents are satisfied with government communication

Deep Dive into the Wheel of Happiness Spheres

We are going to deep dive into some of the remaining spheres of the wheel.

Trust and Integrity

Survey data reveals mixed perceptions about the integrity and responsiveness of city administration. Only **41.3% of residents** trust the public services provided by the city, and opinions are almost evenly split on whether city officials operate with integrity, with **37.4% in agreement** and **37% disagreeing**.

Financial

Only **62%** are satisfied with housing affordability, and **58%** with school quality, reflecting concerns over key public services.

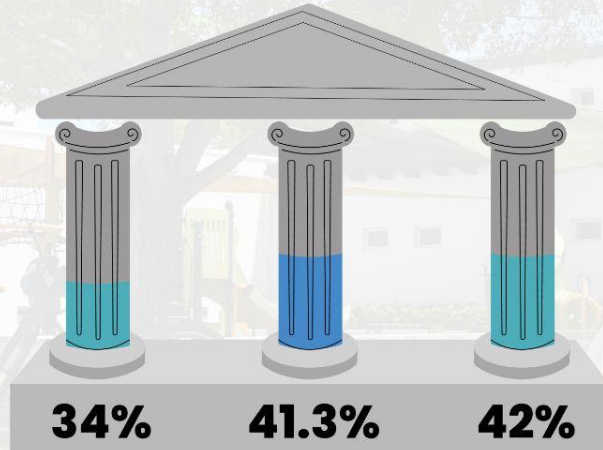
Civic Engagement and Government

61% feel government actions have a lot of influence on their happiness, with uncertainty about civic support.

Intellectual

58%

of respondents are satisfied with school quality affordability

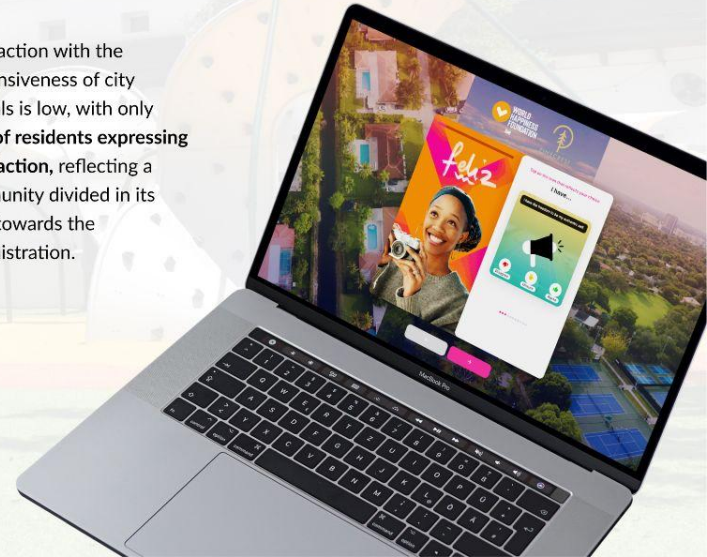


of residents feel government actions have a minor influence on their happiness

of residents trust the public services

of residents express satisfaction about the responsiveness of city officials

Satisfaction with the responsiveness of city officials is low, with only **42% of residents expressing satisfaction**, reflecting a community divided in its trust towards the administration.





Focus Groups and Community Insights (Qualitative)

In this section of the report, we present the most significant insights derived from the qualitative data collected through focus groups and community discussions. These findings offer a deep understanding of the perceptions, experiences, and values of Pinecrest residents, shedding light on the community's identity, sense of happiness, challenges, and potential solutions.

This part of the report is divided into five main blocks:

- A. **Village of Pinecrest Identity**
- B. **Sense of Happiness**
- C. **Challenges**
- D. **Residents' Suggestions**
- E. **Schools**

Each block begins by highlighting the most frequently discussed topics, reflecting the collective viewpoints of the respondents. Following these highlights, we provide a comprehensive table summarizing the topics raised within each block.

Please note that the perspectives shared in this section are entirely based on the feedback and views expressed by the respondents during our qualitative data collection process.



A. VILLAGE OF PINECREST IDENTITY



FIND YOUR **bē**

The Identity of the Village of Pinecrest a suburban enclave nestled within Miami-Dade County, embodies a unique blend of cultural identity, community engagement, and quality of life. This part of the report aims to delve deeply into various facets of the community dynamics, reported by residents, including its rich cultural tapestry, neighborhood relationships, community groups, safety concerns, local government engagement, demographic shifts, and overall resident satisfaction. Residents express genuine admiration for Pinecrest's positive aspects, including its excellent schools, safe neighborhood, and strong sense of community. They appreciate community initiatives such as the farmers market, artistic events, public parks, and activities catering to residents of all ages. Residents acknowledge the convenience and value of living in Pinecrest, its proximity to amenities and the overall comfortable living environment.

The main aspects about the Village of Pinecrest Identity according to residents' perception are detailed as follow:

1. Cultural Identity and Community Engagement

The Village of Pinecrest's cultural identity is multifaceted, characterized by a quaint village ambiance coupled with modern amenities. Residents often describe Pinecrest as a haven, known for its excellent schools, serene parks, strong sense of safety, and protection from Miami's bustling urban landscape. This identity has evolved over the years, reflecting the diverse population, and changing community dynamics.

Community environment is a cornerstone of Pinecrest's vibrancy. Residents express a strong sense of belonging and camaraderie, fostering good relationships with neighbors despite occasional differences in political views. Influential community groups, such as those advocating for preservation and promoting sportsmanship among children, positively contribute to Pinecrest's community dynamics.

2. Safety and Local Government Engagement

The Village of Pinecrest is renowned for its safety and responsive police department, and local government engagement plays a pivotal role in addressing community concerns. Residents appreciate the authorities' efforts to enhance safety and awareness, highlighting the responsive nature of the police department. They express overall satisfaction with the responsiveness and engagement of local government authorities, acknowledging officials' efforts to address community concerns, communicate effectively with residents, and involve them in decision-making processes. There are also mentions of potential excessive initiatives from local government, indicating a need for balance between responsiveness and regulatory impact.

3. Quality of Life and Community Initiatives

The quality of life in Pinecrest is a major attraction for residents. Excellent schools, a safe neighborhood, and a strong sense of community contribute significantly to residents' overall satisfaction. Community initiatives, including the popular farmers market, cultural events, public parks, and diverse activities for all ages, further enhance the quality of life in Pinecrest.

Engagement with local government is commendable, with residents acknowledging officials' responsiveness to inquiries and quick communication channels. Investments in green spaces, public parks, and community amenities underscore Pinecrest's commitment to enhancing residents' well-being and fostering a sense of belonging.

The residents emphasize the importance of community well-being, safety around schools, traffic management, and creating a safe environment for children to play in parks. They appreciate community events and services, especially for seniors, parents with young children, and kids, while also noting the need for better advertising and communication about these offerings. Residents reflect on the fortunate aspects of living in Pinecrest, comparing it to other areas and expressing gratitude for the community's overall well-being.

4. Changes Over Time and Demographic Shifts

Pinecrest has experienced notable changes over time, including population growth, demographic shifts, and alterations in the community landscape. Rising property values and demographic shifts have led to changes in neighborhood dynamics, impacting neighborly interactions and community visibility. New residents, often remodeling or rebuilding homes, have contributed to a more enclosed property layout.

Demographic shifts, particularly an increase in Hispanic and other cultural influences, enrich Pinecrest's cultural tapestry. Despite these changes, residents appreciate the inclusivity of the community and its tranquil environment compared to busier urban areas. Maintaining a sense of community amidst demographic shifts remains a focal point for residents and community leaders. Comparisons with other areas like Coral Gables emphasize Pinecrest's unique cultural identity, sense of peace, and tranquility amidst a changing urban landscape.

5. Sense of Security and Trust

Residents highlight the sense of security and trust within the community. They value the community's welcoming atmosphere and interactions while walking or biking, fostering a sense of connection and belonging. The residents express gratitude for the positive experiences and relationships within Pinecrest, contributing to a strong attachment to the community despite challenges. Overall, the residents' perceptions of Pinecrest reflect a nuanced understanding of the community's strengths, challenges, and ongoing changes. Their appreciation for the positive aspects, engagement with local government, and emphasis on community well-being underscore Pinecrest's appeal as a desirable and inclusive place to live within the Miami-Dade region.

6. Local Business and Entrepreneurship

Residents' perceptions of Pinecrest may also be influenced by the presence of local businesses, entrepreneurial ventures, and small-scale enterprises within the community. The support for local businesses, artisan shops, cafes, restaurants, and boutique stores contribute to a vibrant local economy, foster a sense of community pride, and create unique experiences for residents and visitors alike. Additionally, residents may value the entrepreneurial spirit, creativity, and innovation that local businesses bring to Pinecrest, enhancing its character and appeal as a dynamic and thriving community.

Additional aspects offer a more comprehensive understanding of residents' perceptions and experiences living in Pinecrest, reflecting the diverse and multifaceted nature of the community. [Table 1 summarizes additional findings.](#)



Table 1. Additional topics about Pinecrest Identity

Supportive Networks and Services: The availability of support networks, social services, assistance programs, senior programs, youth programs, and community organizations that cater to diverse needs and demographics can positively impact residents' well-being and sense of belonging in Pinecrest.

Communication and Information Sharing: Residents' access to information about community events, news, updates, and engagement opportunities through communication channels, local media, newsletters, social media platforms, and community websites can enhance their engagement and participation.

Community Events and Cultural Activities: Residents appreciate specific community events or cultural activities unique to Pinecrest, such as local festivals and art exhibitions. These events contribute to the community's cultural vibrancy and offer opportunities for residents to connect and celebrate together.

Cultural Institutions and Preservation: The presence of cultural institutions, the Pinecrest Garden, art galleries, historical landmarks, and efforts towards preservation and cultural enrichment contribute to residents' appreciation of Pinecrest's cultural and historical heritage.

Neighborhood Character and Aesthetics: The overall neighborhood character, aesthetics, landscaping, cleanliness, and maintenance of public spaces, streetscapes, and residential areas contribute to residents' sense of pride in their community and influence their overall perception of Pinecrest.

Environmental Sustainability: Pinecrest's efforts towards environmental sustainability, such as green initiatives, recycling programs, or conservation efforts are noted. They value the initiatives to preserving natural resources and promoting eco-friendly practices.

Educational Opportunities: Besides mentioning the quality of schools, residents might also appreciate educational opportunities beyond formal schooling, such as workshops, seminars, or community classes offered in Pinecrest. These opportunities contribute to lifelong learning and personal growth within the community.

Real Estate Market and Housing Options: Residents' experiences with the real estate market, property codes enforcement, and housing diversity within Pinecrest influence their perceptions of the community as a desirable place to live and invest in real estate.

Social and Recreational Opportunities: Residents' experiences with social and recreational opportunities within Pinecrest, such as community centers, sports facilities, libraries, and parks, can shape their perception of the community as a place that fosters social connections and active lifestyles.

Civic Engagement and Volunteering: Residents' involvement in civic engagement, volunteering, or community service initiatives are mentioned. They value opportunities to contribute positively to the community and make a difference through active participation in local projects or initiatives

Infrastructure and Public Services: The quality of infrastructure, public services, and amenities such as roads, utilities, recreational spaces, and public transportation could influence residents' satisfaction and perception of Pinecrest as a well-developed and livable community.

Healthcare Services: Access to quality healthcare services, medical facilities, hospitals, and healthcare professionals within nearby areas may be an important consideration for residents, especially those with healthcare needs or families with children.

Historical and Architectural Heritage: Residents' appreciation for Pinecrest's historical heritage, architectural character, preservation efforts, and community landmarks may also contribute to their overall sense of attachment and pride in the community.

Transportation and Accessibility: The ease of transportation and accessibility to major roads, public transportation options, and proximity to key locations such as downtown Miami, airports, and shopping centers can influence residents' convenience and overall satisfaction with Pinecrest.



Closing Remarks on Pinecrest Identity

Pinecrest emerges as a dynamic and multifaceted community, shaped by a myriad of factors that influence residents' perceptions and experiences. The residents' perception of Pinecrest is deeply intertwined with the community's cultural identity, neighborhood dynamics, safety concerns, local government engagement, demographic shifts, and overall quality of life.

Pinecrest's cultural identity is characterized by its quaint village ambiance, great schools, safety, and strong sense of community. Residents appreciate the diverse mix of people and cultural influences, highlighting inclusivity as a positive aspect. The community's engagement with local government is commendable, with residents expressing overall satisfaction with responsiveness and communication channels.

The quality of life in Pinecrest is a significant draw, with excellent schools, diverse community initiatives, and a vibrant cultural scene contributing to residents' overall satisfaction. Pinecrest residents feel a strong sense of attachment and pride in their community. The support for local businesses, emphasis on environmental sustainability, access to healthcare services, social and recreational opportunities, and preservation of cultural heritage further enrich residents' experiences and perceptions of Pinecrest.

Sustaining and enhancing Pinecrest's community dynamics also include:

- *Continued investment in safety measures and infrastructure improvements to address growing population concerns.*
- *Promoting inclusive community initiatives and events to foster neighborly interactions and strengthen community bonds.*
- *Collaborative efforts between residents, community groups, and local government to address emerging challenges and maintain Pinecrest's unique identity.*
- *Encouraging diverse participation in community decision-making processes to ensure inclusivity and representation of all residents' perspectives.*

In essence, Pinecrest represents a balance between suburban tranquility and urban vibrancy, offering residents a unique blend of amenities, community engagement, and quality of life that contribute to its enduring appeal as a desirable place to live and thrive within the Miami-Dade region



B. SENSE OF HAPPINESS

The Sense of Happiness in Pinecrest is also a multidimensional concept shaped by community bonds, natural surroundings, safety, amenities, and personal experiences. The information here presented delves deeper into the various aspects of happiness as expressed by residents of Pinecrest, highlighting key themes and insights from their perspectives.

1. Community Bonds and Engagement

The sense of happiness in Pinecrest is strongly tied to community bonds and active engagement. Residents value the tight-knit nature of their neighborhoods, where knowing your neighbors and participating in community events are common. Activities such as the farmers' market, yoga classes, and cultural events at the community center foster a sense of togetherness and contribute positively to residents' overall happiness. However, some residents express a desire for more diverse community activities and increased social interaction, especially in areas where larger properties may limit traditional neighborhood gatherings.

2. Natural Environment and Peacefulness

The natural environment plays a significant role in shaping happiness in Pinecrest. Residents appreciate the abundance of green spaces, well-maintained parks, and the overall tranquility of the area. The presence of wildlife adds a unique charm to the community.

3. Safety and Belonging

Feeling safe and belonging to a welcoming community are fundamental aspects of happiness for Pinecrest residents. They commend the efforts of law enforcement and community watch programs in maintaining safety and reducing crime rates. The inclusive nature of the community, where diversity is embraced and discrimination is rare, fosters a sense of belongingness and acceptance among residents of different backgrounds. This inclusivity contributes significantly to the overall well-being and happiness of Pinecrest residents.

4. Quality of Life and Amenities

The quality of life in Pinecrest is characterized by convenience, accessibility to amenities, and well-planned infrastructure. Residents appreciate the proximity to essential services such as schools, shopping centers, healthcare facilities, and recreational areas. The abundance of parks, playgrounds, and community centers significantly enhances the livability of Pinecrest, offering residents ample opportunities for socialization and leisure activities. These recreational amenities promote a healthy lifestyle and contribute to overall happiness, including the community center, walking trails, bike paths, and various sports and activities available within the community. Together, they create a vibrant environment that fosters community engagement and well-being.

5. Environmental Sustainability and Green Living

Conservation projects are essential for fostering happiness in Pinecrest. Residents value the recycling programs, composting initiatives, well-maintained green spaces, tree preservation efforts, and the Pinecrest Garden.

6. Arts and Cultural Scene and Cultural Diversity

Pinecrest boasts a vibrant arts and cultural scene, featuring art galleries, music venues, theater performances, and cultural festivals that enhance residents' quality of life and provide opportunities for creative expression. Residents appreciate the variety of cultural events and celebrations that reflect the community's diverse backgrounds, fostering cross-cultural understanding, tolerance, and unity among individuals from different ethnicities, religions, and backgrounds. These cultural offerings not only contribute to a culturally rich community but also strengthen connections among residents, promoting inclusivity and a shared sense of belonging.

Closing Remarks on the Sense of Happiness

Happiness in Pinecrest is a product of vibrant community life, natural beauty, safety, inclusivity, and access to essential amenities. Fostering greater community interaction, and preserving the unique character of Pinecrest, the community can continue to thrive as a place where residents find joy, fulfillment, and a sense of home. The strong sense of community bonds, active engagement in local initiatives, and inclusivity across diverse backgrounds foster a supportive and welcoming environment where residents feel a sense of belonging and connection.

Pinecrest's lush greenery, well-maintained parks, and efforts toward environmental sustainability contribute to a serene and peaceful ambiance that enhances residents' quality of life and happiness. The emphasis on safety measures, responsive law enforcement, and community watch programs instills a sense of safety and security among residents, allowing them to enjoy their surroundings and activities without undue concerns.

Additionally, access to essential services, educational institutions, recreational amenities, and cultural offerings enrich residents' lives and provide opportunities for personal growth, leisure activities, and community engagement. Residents' active involvement in local governance, transparent decision-making processes, and collaborative efforts between community members and government entities contribute to effective governance, responsive services, and a sense of ownership and pride in shaping the community's future.

Pinecrest's vibrant arts scene, cultural diversity, and innovative initiatives foster creativity, cultural appreciation, and a forward-thinking mindset that adds vibrancy and dynamism to community life. Combining with the availability of wellness programs, and opportunities for physical activity and healthy living promote residents' well-being, vitality, and happiness.

However, when reporting what makes them happy, residents also highlighted the need for additional amenities, such as sports courts, dog parks, and improved public transportation, to further enhance their quality of life and happiness. Additionally, some residents expressed a desire for more diverse community activities and increased social interaction, particularly in areas where larger properties may limit traditional neighborhood gatherings. We will address these and other suggestions in Section "D - Residents' Suggestions."





C. CHALLENGES



FIND YOUR **bē**

The Challenges faced by the community of Pinecrest reflect both the dynamism and complexity of modern life. As a leading-edge, forward-thinking enclave known for its tranquil neighborhoods, excellent schools, and tight-knit community spirit, Pinecrest embodies the aspirations and concerns of its diverse residents. This report reveals the several challenges that confront Pinecrest today, ranging from communication hurdles and community engagement issues to infrastructure strains, governance complexities, and demographic shifts. Table 3 presents the main challenges among residents' opinions.

By examining these challenges comprehensively, we aim to uncover insights and actionable strategies that can empower Pinecrest to navigate these obstacles effectively while preserving its cherished qualities and enhancing the well-being of its residents. Strategic planning is required to address relevant challenges such as traffic congestion, infrastructure needs, and maintain Pinecrest's ease of navigation and quality of life. Balancing development with historic preservation, green spaces, and maintaining a family-friendly environment. The importance of responsible development to avoid overpopulation, maintain affordability, and preserve the Village of Pinecrest's atmosphere are some of the main challenges.

Overall, the main challenges facing Pinecrest encompass a range of critical areas. These include communication and community engagement difficulties, particularly in reaching residents effectively and fostering active participation. Infrastructure concerns, such as traffic congestion, speeding, and the need for environmental sustainability, pose significant challenges that require immediate attention. Governance and transparency issues, along with affordability challenges for older residents and demographic shifts, underscore the complexities of managing growth while preserving the Village of Pinecrest's unique identity. Enhancing cultural diversity, promoting inclusivity, and implementing strategic community-building initiatives are vital for fostering a cohesive and resilient community. These challenges collectively highlight the need for collaborative efforts, innovative solutions, and proactive engagement to address key issues and ensure a sustainable and vibrant future for Pinecrest.



Table 3. Main Challenges in the Village of Pinecrest

Communication and

Community Engagement:

Difficulty in connecting with residents and engaging them due to the wide range of digital platforms and online negativity. There is low attendance at council meetings, with residents often participating only during contentious issues rather than to express satisfaction. A lack of awareness or perceived importance contributes to limited community participation. Additionally, there is a mismatch between community preferences and the programs offered by Pinecrest Parks and Recreation, Pinecrest Gardens, and the community center.

Infrastructure and Traffic Challenges:

Increased traffic and speeding on residential streets require greater attention from the police department. There is a need for speed bumps, improved bike-friendly infrastructure, and safe play areas for children. Additionally, inconsistent enforcement of building codes and concerns about tree removal and driveway extensions

Governance and Transparency Challenges:

There is a lack of transparency in accessing public information and difficulties in obtaining data from government entities. Inconsistencies in code compliance for building and yard regulations also exist. Additionally, navigating the Pinecrest website to access services can be challenging.

Activities offered: Desire for improved offers such as seating areas at the farmers markets, and more engaging activities for diverse age groups.

Environmental Concerns: The impact of developments on green spaces, aesthetics, and the overall charm of Pinecrest. Challenges include managing wildlife disturbances, such as noise from peacocks, issues with iguanas, and sanitation concerns. There is a need for responsible development to preserve Pinecrest's unique character and quality of life, as well as ongoing attention to ensure proper waste disposal.

Aging and Senior Support: Concerns have arisen that both the government and residents are not adequately supporting Pinecrest's elders in promoting active aging. There is a need for programs that support aging residents, facilitating their ability to age in place while maintaining quality of life and independence.

Infrastructure Improvements: Need for upgrades in infrastructure, including sewer systems, and traffic control measures. Desired for improved parks and community facilities.

Safety and Security Challenges: Concerns about crime, theft, and safety issues in residential areas. There are challenges in communication with local authorities and their responsiveness during emergencies. Efforts are needed to enhance neighborhood safety, implement crime prevention measures, and improve communication tools

Affordability and Demographic Changes: High property taxes create challenges for retirees on fixed incomes. Changes in neighborhood demographics arise from affordability issues. Concerns about overdevelopment, rising property prices, and investment-driven developments that impact the community's character.

Financial Sustainability and Budget Allocation: Concerns regarding budget allocation for community services, infrastructure maintenance, and public safety. Strategies for financial sustainability, efficient resource utilization, and addressing residents' affordability issues.



D. RESIDENTS' SUGGESTIONS

Residents' Suggestions are presented in the following data, providing a comprehensive overview of their recommendations that reflect a collective vision for enhancing the quality of life, fostering community engagement, and addressing key challenges within the neighborhood. Through community outreach and dialogue, residents have voiced a multitude of ideas spanning various domains, from infrastructure improvements and safety measures to cultural enrichment, environmental sustainability, and economic development. We synthesized these diverse suggestions while avoiding repetitive solutions, offering a nuanced understanding of the residents' priorities and aspirations for the future of Pinecrest.

The suggestions presented are the result of active citizen participation, highlighting the community's commitment to collaborative problem-solving and collective action. Residents have expressed a strong desire for inclusive decision-making processes, transparent communication channels, and proactive initiatives that promote well-being, connectivity, and resilience. By capturing the breadth and depth of resident feedback, this report seeks to support the World Happiness Foundation recommendations to shape a vibrant, sustainable, and thriving future for Pinecrest.



1. Safety

Community Safety and Awareness: Residents express a strong desire for improved communication about safety issues, such as crime data and incidents. While they appreciate safety tools and apps, there is a call for more detailed information from village authorities. Positive interactions with law enforcement are frequently mentioned, with community-friendly programs and relations contributing to a sense of security and connection.

Enhanced Emergency Response Communication:

Residents recommend improving communication during emergencies through an alert system that sends notifications via text, email, or phone calls. This would inform residents about public safety threats, road closures, and other incidents in real time.

Community Policing: There is a desire for more visible police presence and interaction in neighborhoods to foster a stronger sense of security. Positive experiences with law enforcement, particularly in schools, have contributed to a feeling of ease and reassurance among residents.

Public and Personal Safety Measures: Residents suggest implementing public safety awareness programs, including seminars on crime prevention, home security, and neighborhood watch initiatives. These programs aim to educate residents about safety protocols and encourage proactive measures. Alongside these efforts, residents emphasize the importance of personal vigilance, such as securing doors and vehicles to prevent thefts. They also highlight tools like the Nextdoor app, Citizen, and Safewatch for accessing crime updates and sharing concerns, fostering a more informed and safety-conscious community.

2. Social Engagement:

Promoting Community Engagement: Suggestions include simplifying event registration processes, addressing language barriers, and encouraging neighborly interactions through initiatives like sitting outside during community events. Additionally, residents advocate for more diverse programming and partnerships that support local artists and musicians, which would help enhance community engagement and celebrate Pinecrest's cultural richness.

Civic Engagement and Volunteerism: There is a strong push to promote civic engagement and volunteerism by encouraging residents to actively participate in local government, community service projects, and civic organizations. Initiatives to recognize and celebrate volunteers, provide training, and offer resources for civic engagement are also highlighted as ways to build a culture of giving back to the community.

Encouraging Neighborly Connections: They express a desire for more diverse community activities and increased social interaction, especially in areas where larger properties may limit traditional neighborhood gatherings. Residents propose organizing activities like exercise classes and walking groups to foster social connections. Other suggestions include offering unique classes, such as cooking and gardening, and creating interest clubs meeting, such as sailing and book club, to provide more opportunities for residents to bond and strengthen neighborly ties.

Community-oriented Spaces: Ideas include using parks like Pinecrest Gardens for events like outdoor concerts, movies, and jazz performances to enhance community engagement. Suggestions for creating non-commercial spaces akin to quaint cafes, fostering social interaction, and promoting a sense of community without pressure to consume.

3. Communication and Civic Engagement:

Communication Channels: Residents emphasize the importance of diverse communication channels like newsletters, social media, and community postings to keep residents informed about local news and events. They suggest proactive outreach to increase awareness and participation. They emphasize the need for transparent and clear communication from authorities to improve accessibility and transparency.

Accessibility of Meetings: Discussions center around the timing and place of council meetings and public hearings, with suggestions for more accessible times and a larger and more welcoming space to accommodate working residents and increase participation.

Park Design and Usage: Criticism is voiced about park designs without public input, emphasizing the need for more resident involvement in decision-making processes, especially regarding restroom placements and event planning in parks like Leviathan Park and Pinecrest Gardens.

Civic Engagement and Governance: Residents express a strong desire for increased involvement in local decision-making processes and greater transparency and accountability in government actions. They seek improved accessibility to public services and more responsiveness from local authorities to community needs and concerns. While residents are eager to engage, many are unsure of how to do so effectively. They emphasize the importance of showcasing successful community-driven projects and collaborations between residents and government agencies as examples of effective engagement. By highlighting these initiatives, the community can inspire participation and foster a more inclusive governance process that empowers residents to make a meaningful impact.

4. Diverse Initiatives

Youth Engagement and Programs: Residents express a desire for more programs and activities targeting youth engagement, such as sports leagues, educational workshops, and cultural exchanges. These initiatives aim to provide positive outlets for young residents and promote a sense of belonging and participation in community life.

Diversity and Inclusion Programs: Residents emphasize the importance of diversity and inclusion programs that celebrate cultural diversity, promote equity, and foster unity among residents from different backgrounds. This may include cultural festivals, diversity training workshops, and community dialogues focused on inclusion and belonging.

Improving Elder Care: Residents highlighted the need for better support for elders. Suggestions include creating a program for regular check-ins to assist seniors, a matching program between teenagers and elders for volunteering and companionship, enhancing activity programs available to them, and establishing a better system for updating the Pioneers' roll.

Education and Lifelong Learning: Residents recommend the implementation of lifelong learning opportunities, adult education programs, and initiatives that promote continuous learning and personal development. Suggestions include offering classes led by volunteer residents who can share their unique skills and expertise, fostering a collaborative and enriching community environment. By encouraging residents to teach and learn from one another, the community can cultivate a culture of growth, connection, and shared knowledge.

Welcome Wagon: With more newcomers, there is a call for the Village to improve the Welcome Wagon program in collaboration with neighbors, to strengthen community ties. The program could include offers from local businesses to help integrate new residents and support the local economy.

5. Infrastructure, Transit, and Mobility

Public Transit and Mobility Solutions: Discussions focus on public transit and mobility solutions, including advocating for enhanced bus routes and expanding Freebee and bike-sharing programs. They stress the need for safer biking paths, improved access to existing routes, and traffic calming measures to ensure pedestrian and cyclist safety. While roundabouts are effective in slowing traffic, there are concerns about the addition of them. They also emphasize the importance of courteous driving behavior.

Utility Infrastructure and Technology: Concerns arise regarding utility infrastructure projects, law enforcement technology, and the effectiveness of tag reader programs for crime prevention and investigation.

Infrastructure Improvements: Residents call for better infrastructure, including underground power lines, improved road markings, and enhanced cell phone coverage to eliminate dead zones. They also support future technologies like electric vehicles.

Amenities: Residents are requesting additional amenities, including sports courts—especially pickleball courts—and dog parks. They express dissatisfaction with the rule prohibiting leashed dogs in parks and voice concerns about the existing off-leash dog parks.

6. Environment:

Environment and Sustainability: Residents raise concerns about environmental issues such as canal maintenance, littering, and the overpopulation of peacocks. They propose more effective eradication programs for invasive species and better coordination between government entities to address these environmental challenges.

Green Initiatives: Residents advocate for sustainability efforts like promoting recycling programs, community gardens, energy-efficient infrastructure, and eco-friendly practices. These initiatives aim to reduce environmental impact, conserve natural resources, and build a more sustainable and resilient community. There is also strong interest in conservation and restoration projects, including protecting local ecosystems, restoring natural habitats, and mitigating environmental degradation through tree planting campaigns, wildlife conservation, and pollution reduction. They highlight how these initiatives contribute to a healthier and more environmentally conscious community, fostering a sense of pride and happiness among residents.

7. Other

Economic Development and Business Support: Residents advocate for supporting local businesses, enhancing the aesthetics of commercial areas, and creating welcoming spaces like cafés and communal gathering spots to promote economic growth and community cohesion. They also suggest that the Village of Pinecrest administration could take a more active role in promoting local businesses within the community.

Housing Initiatives for elders: Suggestions have been made for implementing affordable housing initiatives or incentives to address housing affordability challenges faced by seniors. This includes making zoning adjustments and establishing subsidy programs to create a property tax program specifically for this population.

Historical Preservation and Heritage: Suggestions are made for preserving and celebrating Pinecrest's historical heritage, including landmarks, historical sites, and cultural traditions. This involves initiatives like historical tours, heritage preservation grants, and community projects to document and share the area's rich history with current and future generations.



Closing Remarks on Resident's Suggestions

In closing, the suggestions and insights shared by Pinecrest residents underscore a shared commitment to building a resilient and inclusive community. From enhancing safety measures and fostering community engagement to promoting environmental stewardship and cultural enrichment, the residents' voices reflect a deep sense of ownership and pride in shaping the future of Pinecrest. The emphasis on transparent communication, proactive initiatives, and collaborative decision-making signals a collective vision for a vibrant and sustainable neighborhood where every resident's voice is heard and valued.

The suggestions and recommendations provided by Pinecrest residents underscore a profound commitment to community well-being, sustainable development, and inclusive governance. The diverse array of ideas presented, ranging from infrastructure enhancements to social engagement initiatives, reflects the collective vision for a vibrant and harmonious neighborhood. Through active dialogue and engagement, residents have demonstrated a keen awareness of the challenges and opportunities facing Pinecrest, offering pragmatic solutions and innovative approaches to address them.

As Pinecrest navigates its path forward, these suggestions serve as a roadmap for prioritizing key areas of improvement, leveraging strengths, and addressing challenges with creativity and innovation. By harnessing the power of community collaboration and leveraging resident expertise, Pinecrest can continue to evolve as a model of harmonious living, where safety, well-being, and connectivity thrive, creating a truly exceptional place to call home. This report serves as a testament to the power of community-driven initiatives and the potential for positive change when stakeholders come together with a shared vision for a better tomorrow.





E. SCHOOLS



FIND YOUR **bē**



Schools are addressed as a distinct topic due to their critical importance within the community. Most residents proudly highlight the quality of their schools as a key element of Pinecrest's identity, emphasizing that schools serve as the cornerstone for shaping the future of our society. Moreover, school initiatives extend beyond faculty, staff, and students; they also influence families, creating a significant societal impact. We conducted focus groups with school administrators and students, and we will present their insights in the following sections.

Perspective from School Administrators

The main concerns expressed by the school administrators centered around time constraints and inadequate mental health resources for both students and staff. Teachers struggle to participate in wellness programs due to their heavy workload and personal obligations, particularly after school. Mental health personnel, such as counselors, are overworked and unable to meet the growing needs of students, while schools are inundated with multiple programs without enough staff to manage them effectively. The inconsistency of mental health support, with coordinators not being present daily, further exacerbates the issue.

To address these challenges, the school administrators suggested providing teachers with more flexibility and resources for self-care. This includes building faculty gyms or offering free memberships to local gyms, as well as providing access to mindfulness apps. Incorporating therapy animals in schools was also noted as an effective method for reducing stress among both students and staff. Additionally, they recommended hiring more mental health personnel to alleviate the workload and improve the quality of support for students. Overall, the focus was on making wellness resources more accessible and reducing the burden on existing staff.

In summary, the primary suggestions focused on giving teachers more flexibility and resources to manage their well-being, particularly through increased access to gyms, more mental health personnel, and time for self-care during the workday.

Main Challenges

Time Constraints and Limited Participation in Wellness Programs:

Teachers face significant time constraints due to heavy workloads and personal responsibilities, making it difficult to engage in self-care or wellness activities. After-school wellness programs, in particular, see limited participation as many teachers have family commitments or other obligations, such as picking up children, that prevent them from staying after school.

Overworked Mental Health Personnel:

Counselors and mental health staff are stretched too thin to meet the growing needs of students effectively. With too many responsibilities, the support available to students is limited, leading to concerns about the adequacy of mental health services.

Insufficient Mental Health Resources:

While improvements in mental health resources have been noted since the pandemic, the inconsistency of available mental health coordinators remains a challenge. Their absence on certain days hinders the ongoing support needed by students.

Program Overload:

Schools are inundated with various programs, many of which lack the necessary personnel to manage them effectively. This overload creates difficulties in implementation, diluting the potential impact of each initiative.

Main Administrators' Suggestions

More Time for Teachers:

Teachers need dedicated time during the school day for self-care and wellness activities, rather than relying on after-school programs when many are unable to participate due to personal commitments. Offering time for mindfulness activities or well-being sessions as part of the regular school schedule was proposed to help alleviate the stress teachers face.

Faculty Gyms, Gym Access, and Community Support:

It was recommended that schools provide faculty gyms or offer free or subsidized memberships to local gyms, making it more convenient for teachers to engage in fitness activities. Partnerships with community gyms to provide these resources without financial burden were also suggested, allowing teachers to access wellness programs both on and off-campus, which would reduce stress and promote physical and mental health.

Mindfulness and Mental Health Apps:

Providing teachers with subscriptions to mindfulness and mental health apps at no additional cost was seen as an effective strategy for promoting relaxation and stress management. These apps could offer flexible and accessible solutions for teacher well-being, allowing them to practice mindfulness at their convenience.

Therapy Animals:

Introducing therapy animals into schools was suggested as a way to reduce stress for both students and staff. These animals could provide emotional support, creating a calmer and more supportive school environment.

Additional Mental Health Personnel:

Increasing the number of mental health staff in schools was recommended to better address the emotional and mental health needs of students. With more personnel, schools could offer more comprehensive counseling services and mental health education.

Perspective from Students

Students highlight the significance of social connections, personal achievements, and inner peace as key contributors to happiness, while also underscoring the pressures they face due to demanding academic schedules. Participants identified a need for change in educational policies, suggesting adjustments such as reduced homework, better exam scheduling, and more breaks to alleviate stress. In terms of community engagement, the youth expressed appreciation for Pincrest's family-friendly atmosphere but called for more local activities and spaces to enhance social interaction. Additionally, they pointed out a lack of wellness strategies in schools, advocating for the integration of mental health practices into the curriculum.

Recommendations from the report include incorporating wellbeing practices in schools, enhancing community engagement through more cultural events and social spaces, and revising educational policies to foster a more balanced and supportive environment for students.



Students - Key Findings

1. Concepts of Happiness:

Social Connections: A significant emphasis was placed on happiness deriving from time spent with loved ones and achieving a balance in life despite various stresses.

Personal Achievements and Peace: Achievements, both personal and educational, were highlighted as sources of happiness, along with a state of inner peace despite ongoing challenges.

2. Perceptions of Pinecrest:

Pinecrest is seen as an ideal place to raise a family, noted for its community involvement and friendly atmosphere. Participants described it as suburban, safe, and highly conducive to family life.

3. Educational Challenges and Stress:

High Pressure: Many students reported feeling significant pressure due to rigorous academic schedules, especially with AP exams. The need to excel in multiple domains creates a high-stress environment.

Desire for Change: Suggestions included reducing homework, better scheduling exams, implementing study periods, and providing more breaks to alleviate stress.

4. Community Engagement:

The students value community events and are actively involved in various volunteer activities. They expressed a desire for more local businesses and activities within Pinecrest to enhance community engagement.

5. Wellbeing Strategies:

Participants indicated a lack of effective stress management tools being taught at schools. There's a general consensus that schools should integrate wellness practices into the daily curriculum to improve student wellbeing.

Main Students' Suggestions

1. Implement Wellbeing Practices:

Schools should consider incorporating daily or weekly sessions focused on mental health and stress management, like meditation or relaxation exercises, into the curriculum.

2. Enhanced Community Interaction:

Pinecrest could benefit from more local and accessible venues for young people to gather, such as music venues, parks, and eateries that encourage social interaction.

3. Educational Policy Reforms:

Schools could reassess their homework policies, exam schedules, and overall academic workload to alleviate student stress and enhance the quality of student life. Introducing more frequent breaks and designated periods for relaxation, social interaction, and mindfulness activities were also recommended as effective strategies to support student well-being.

4. Increase Engagement Opportunities:

Schools and the community could collaborate to create more events and programs that foster a sense of belonging and community spirit among youth.

Main Students' Suggestions

1. Implement Wellbeing Practices: Schools should consider incorporating daily or weekly sessions focused on mental health and stress management, like meditation or relaxation exercises, into the curriculum.

2. Enhanced Community Interaction: Pinecrest could benefit from more local and accessible venues for young people to gather, such as music venues, parks, and eateries that encourage social interaction.

3. Educational Policy Reforms: Schools could reassess their homework policies, exam schedules, and overall academic workload to alleviate student stress and enhance the quality of student life. Introducing more frequent breaks and designated periods for relaxation, social interaction, and mindfulness activities were also recommended as effective strategies to support student well-being.

4. Increase Engagement Opportunities: Schools and the community could collaborate to create more events and programs that foster a sense of belonging and community spirit among youth.

PART 2

Recommendations



FIND YOUR **bē**

Recommendations from the City of Happiness

Program

This recommendation was developed based on an integration of qualitative and quantitative data analysis, focus groups, and workshops with senior leaders in the Village of Pinecrest. It reflects the collective insights of residents and underscores Pinecrest's commitment to becoming a model for happiness and well-being. The analysis was grounded in the World Happiness Foundation's Wheel of Happiness framework, which encompasses nine key dimensions of happiness and well-being.



Key

Challenges

1. **Infrastructure Strain:** Addressing traffic “congestion” and aging infrastructure, with calls for expanded public transit and bike-friendly spaces.
2. **Safety and Security:** Increased demand for visible law enforcement, enhanced emergency response, and real-time safety updates.
3. **Affordability and Aging Population:** High property values impact affordability for retirees and a lack of senior-focused housing.
4. **Community Engagement:** Residents seek greater government transparency, accessible communication, and inclusive decision-making.
5. **Mental Health and Wellness:** A strong need for expanded mental health resources for students, teachers, parents, and the community, including well-being programs.
6. **Environmental Concerns:** Residents desire better sustainability efforts, improved recycling, and conservation of green spaces.

Key Opportunities

1. **Community Events and Social Spaces:** Expand community gatherings like farmers' markets and festivals and create more social spaces to enhance community bonds.
1. **Environmental Initiatives:** Strengthen sustainability through recycling, conservation of green spaces, and management of invasive species.
2. **Health and Wellness Programs:** Increase mental and physical health initiatives for all age groups, especially for youth and seniors.
3. **Civic Engagement and Volunteerism:** Provide more volunteer opportunities to foster community engagement and cohesion.

A. Priority Areas

The following priority area recommendations emerged from a collaborative workshop with Village of Pinecrest administrators, conducted after a thorough review of the community survey results, focus group findings, and qualitative and quantitative data analysis.

This workshop served as a culmination of extensive community engagement efforts, including insights from residents, school leaders, and local stakeholders. By integrating these diverse perspectives, the administrators were able to identify key challenges and opportunities, prioritizing actionable strategies to enhance the mental health and wellness of Pinecrest residents. These recommendations reflect a shared commitment to addressing community needs and fostering a culture of well-being and resilience.



Priority Areas

1. Safety and Security

Maintain:

- Neighborhood watch programs, block parties, and public safety tips through door-to-door and social media initiatives.
- Community and school safety events, victim services, and neighborhood watch activities.

Initiate:

- Police Ambassador Program, additional radar signal signs, and address Police visibility, with a communication plan in a context of perception of insecurity.
- Programs targeting children, early intervention, and enhanced security technology like cameras in high-risk locations.
- A Blue Light emergency system for high-risk areas and a command center with real-time crime updates.



2. Mental Health and Wellness

Top Recommendations:

- Develop a comprehensive communication strategy to remove stigma, create awareness, impart correct knowledge education, and provide tools and practices to promote mental health.
- Remove barriers in schools to promote closer relations, and partner with local educational institutions for mental health initiatives like the Schools of Happiness or “Be-Well” Program.
- Establish a 24/7 mental health support network, with a dedicated hotline for immediate access, including pre-existing available resources such as JCS mental health hotline.
- To develop an “Adopt a Senior” for the holidays program to address the loneliness epidemic in the senior population.

Maintain:

- Popular wellness activities (e.g., FitCrest, 5K Run, art, workshops), group fitness classes, and senior wellness programs.
- Support groups for Alzheimer's.

Introduce:

- Integrate emotional support dogs programs, and recreational family activities in nature.
- Awareness campaigns, like lighting buildings with the green color during mental health awareness month.
- Funding mental health programming in schools, parks, and community spaces, and increased interactive activities between youth and seniors.
- Facilitate programs for empathy and emotional intelligence development in children and engagement with schools on parenting and other mental health initiatives.

Priority Areas

3. Community Engagement and Governance

Maintain:

- Existing communication channels (email, social media, resident magazines) and the Citizens Academy for transparency in government operations.

Initiate:

- Operation Happiness: "Boots on the Ground" identifying and training Happiness Ambassadors within our Natural Allies: Places of worship, Medical, Schools, Real estate, Legal, and more. Our Focus: listen to residents and provide information reactivating the "Citizens Academy training" to educate about local government to increase transparency and clarity in government operations.
- Create a "Village of Happiness" tagline to unify messaging on safety, community connection, and environmental sustainability.
- Reintroduce the "Inspire Pinecrest" listening sessions to foster community dialogue on crucial issues.
- Consider creating a volunteer coordinator position to actively seek to pair people interested in volunteering with opportunities in the community.

4. Environmental Sustainability and Green Living

Maintain:

- Existing conservation efforts, such as Pinecrest Gardens, native landscaping, and park maintenance.

Expand:

- Programs focused on recycling, composting, and eco-friendly initiatives, with community gardens and energy-efficient infrastructure.
- Canal maintenance, green space acquisition, invasive species management, and litter control.

Initiate:

- Tree-planting campaigns, environmental workshops, and collaboration with wildlife conservation groups for sustainability awareness.
- Fruit and vegetable garden initiative at schools.

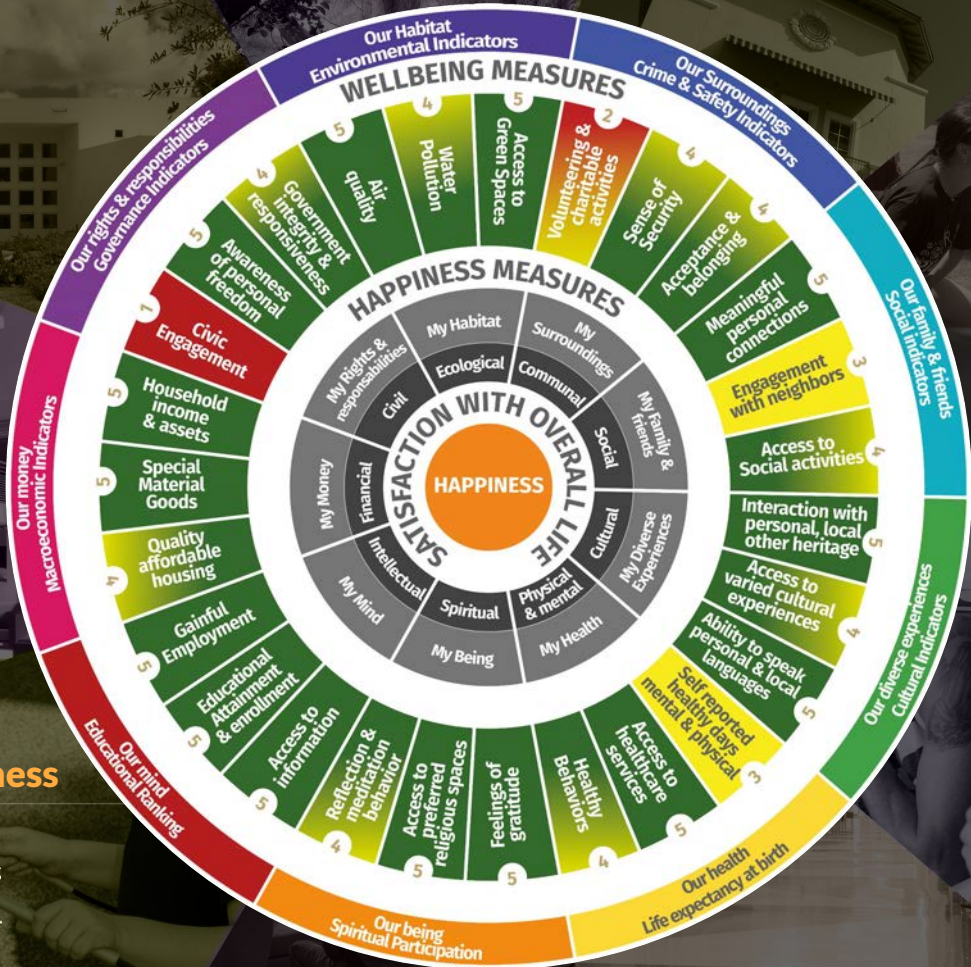


B. Additional Recommendations by Dimension

The following section provides a comprehensive framework for addressing the diverse needs of the Pinecrest community through the lens of the World Happiness Foundation's Wheel of Happiness. This multidimensional approach ensures that every facet of community well-being—ranging from ecological sustainability to social connections and intellectual growth—is addressed in a holistic and actionable manner. These recommendations build upon insights gained from community surveys, focus groups, and collaborative workshops, aligning with Pinecrest's vision of fostering a thriving, inclusive, and resilient community. By targeting these dimensions, the Village can further implement strategic initiatives that enhance happiness and well-being for all residents.

Wheel of Happiness

Circular Wheel Diagram:
Each sphere is represented visually in the wheel, highlighting their interconnected nature and impact on community well-being.



Additional Recommendations by Dimension

Financial

Senior Housing and Financial Assistance:

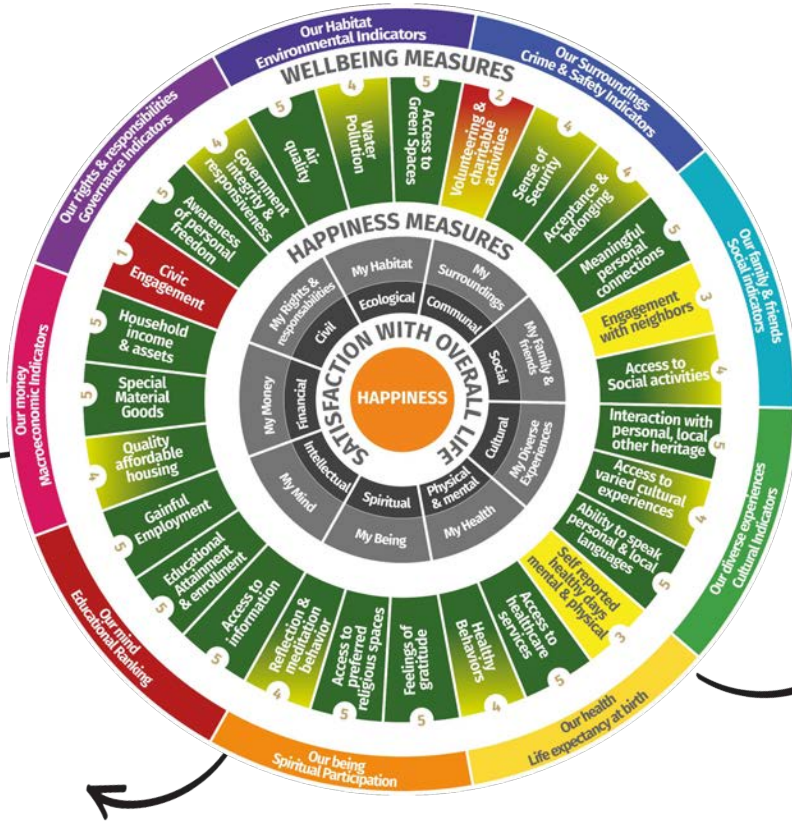
Identify affordable housing options and create support networks offering tax assistance, rent support, and financial literacy programs for retirees.

Financial Counseling and Education: Host free financial planning workshops at the local library or community center, providing residents with tools for budgeting, debt management, and retirement planning.

Spiritual

Inclusive Spiritual Spaces: Offer interfaith community spaces for meditation, mindfulness, and quiet reflection, promoting regular community gatherings focused on gratitude, wellness, and seasonal celebrations.

Gratitude Practices: Hold village-wide seasonal gratitude events or regular gatherings that emphasize reflection, appreciation, and community connection.



Physical and Mental

Community Fitness Programs: Provide accessible exercise classes like yoga, Zumba, or walking clubs in local parks to encourage fitness and wellness for all ages.

Mental Health in Schools: Partner with local therapists to offer school-based counseling and wellness programs, including peer support groups, parenting groups, focused on prevention, resilience, and overall well-being.

Senior Wellness Events: Organize social and fitness activities for seniors, such as dance nights, sing-alongs, and gentle exercise classes, arts and crafts, encouraging active aging and engagement.

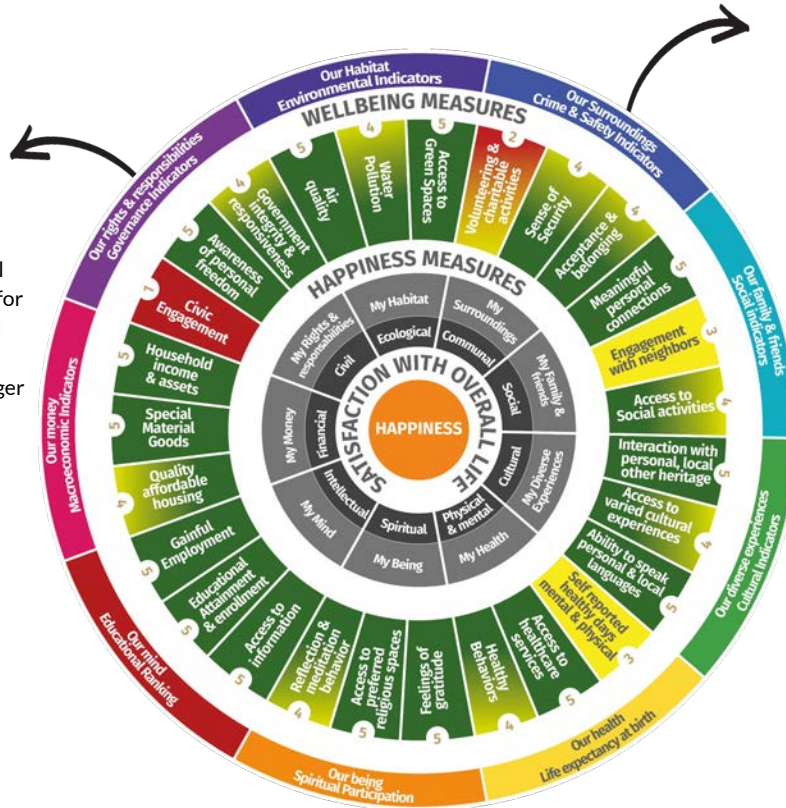
Additional Recommendations by Dimension

Civil

Transparent Local Governance: Continue to advertise the open-door policy for village meetings and encourage residents to join local committees. Host “meet your council” events for direct interaction between residents and local leaders.

Public Meeting Spaces: Explore building a larger Council Chamber.

Civic Participation: Encourage regular citizen surveys to engage the citizenry and monitor resident sentiment about budgetary topics in advance to Strategic Planning.



Communal

Volunteer Programs: Establish a community volunteer network where residents can sign up to support neighbors in need, beautify public spaces, or participate in local events.

Community Gatherings: Organize regular village picnics, seasonal fairs, and other informal social events that bring residents together to strengthen community bonds.

Cultural

Cross-Cultural Festivals: Organize multicultural events that celebrate diversity through food, music, dance, and art, and foster inclusion with community dialogue workshops.

Heritage and Arts Preservation: Hold regular events that celebrate local history and culture, such as arts festivals, history storytelling nights, and craft fairs featuring local artisans.

C. Proposed Short-term Action Plan



Strategic Communications Plan for the Police Department

To improve transparency, safety, and community relations, we recommend developing a **Strategic Communications Plan** for the Pinecrest Police Department, which should focus on:

- **Enhanced Communication:** Regularly share updates on crime trends, public safety alerts, and neighborhood watch activities through multiple platforms (social media, newsletters, community apps).
- **Community Engagement:** Add "Chief Talks" to the already successful "Coffee with a Cop" program and neighborhood safety workshops to keep fostering positive interactions between police officers and residents.
- **Real-time Emergency Alerts:** Implement a more effective emergency notification system using text, email, and community apps to ensure residents receive timely information during critical incidents.
- **Educational Campaigns:** Augment the existing educational campaigns on personal safety, emergency preparedness, and proactive crime prevention measures with initiatives that bring talks to residents through events hosted in collaboration with community based organizations and religious institutions.
- **Branding and Visibility:** Reinforce through all communication means and resident touch points the department's brand of excellence in policy to enhance trust and resident perception.



Proposed Short-term Action Plan

World Happiness Fest 2025 at Pinecrest Gardens

To celebrate and foster community unity, we recommend hosting the **World Happiness Fest 2025** in Pinecrest Gardens on **March 20-21**. This event will focus on:

- **Community Building:** Engage residents of all ages through art, music, wellness activities, and community dialogues that highlight Pinecrest's commitment to happiness and well-being.
- **Volunteerism:** Highlight opportunities and create a continuous opportunity for residents to get involved in local programs and initiatives, fostering a culture of service and civic engagement.
- **Educational Workshops:** Host sessions on mental health, environmental sustainability, and community safety, with contributions from local leaders and experts.

This event aligns with the Village's mission and will set the stage for continued community engagement.

Extension to the Annual Families Event on April 5th

To sustain momentum from the World Happiness Fest, we recommend extending its themes to an **Annual Families Event on April 5th** at PineCrest Gardens. This event will further promote:

- **Family Bonding and Wellness:** Organize family-friendly activities, such as outdoor games, fitness classes, gratitude jars, and wellness booths, creating a joyful and engaging environment for families.
- **Volunteer Recognition:** Acknowledge and celebrate volunteers who contribute to Pinecrest's well-being initiatives, strengthening the community's culture of service.
- **Community-focused Activities:** Create workshops and activities that align with the World Happiness Fest's themes, reinforcing values of happiness, well-being, and civic responsibility.

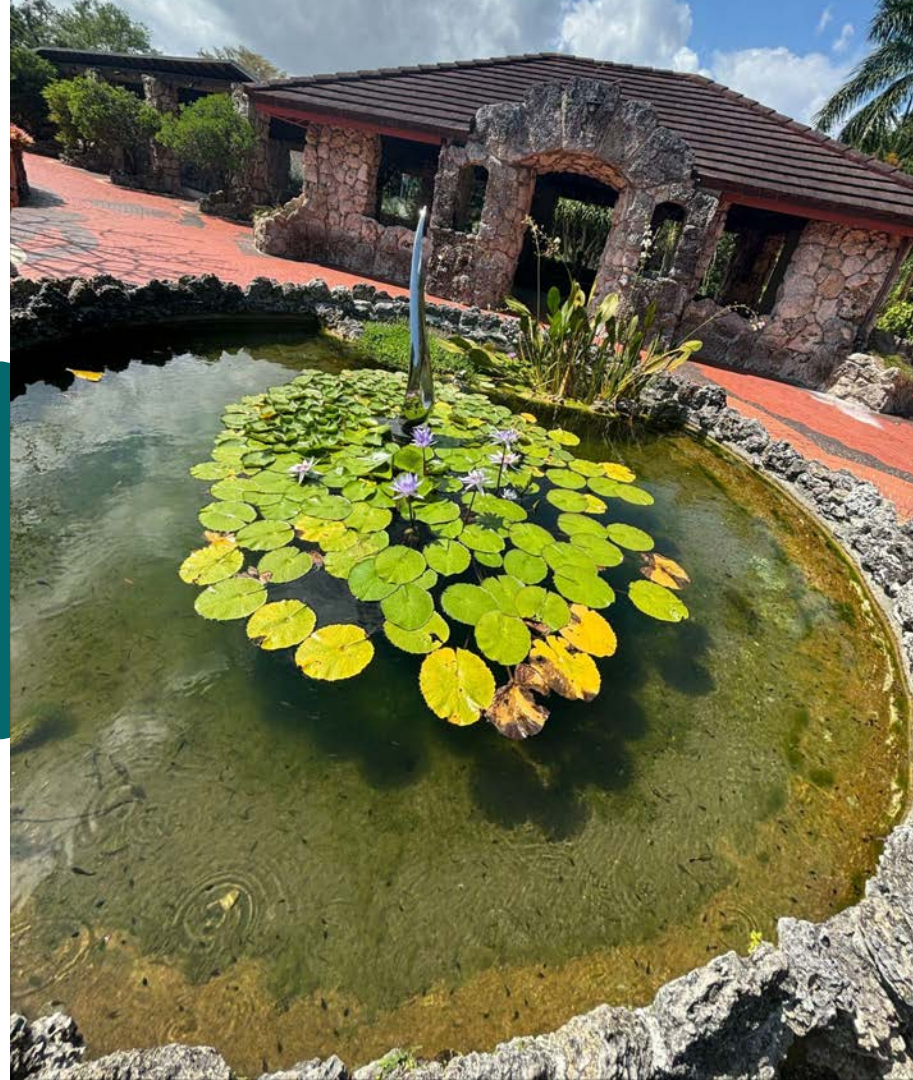
These recommendations aim to strengthen Pinecrest's community bonds, foster active citizenship, and promote a culture of well-being through meaningful and enjoyable events.

Conclusion and Next Steps

The Village of Pinecrest has a unique opportunity to establish itself as a City of Happiness, integrating these recommendations as goals in its Strategic Plan to prioritize safety, well-being, community engagement, and sustainability. By enhancing infrastructure, promoting civic participation, mental health support, and supporting environmental sustainability, Pinecrest can continue to offer a high quality of life while fostering a connected and resilient community.

D. Mental Health and Wellness Initiatives for the Village of Pinecrest

This report outlines a strategic approach to enhancing mental health and wellness in the Village of Pinecrest. The recommendations focus on increasing accessibility, awareness, and community involvement in mental health programs to build a supportive and resilient community.



Key Priorities and Recommendations

1. Comprehensive Communication Strategy

Objective: Ensure residents are informed about available mental health programs and services to increase engagement and utilization.

Action Steps:

- Develop a user-friendly website section dedicated to mental health resources, listing services, events, support groups, and wellness activities.
- Integrate mental health information into monthly newsletters, social media posts, and community bulletin boards.
- Use email and text alerts to remind residents of upcoming events, support group meetings, and new mental health resources.
- Employ clear, inclusive language to make communications accessible to all residents, including neurodivergent individuals.

2. School-Based Mental Health Initiatives

Objective: Remove barriers to mental health resources in schools and partner with local educational institutions to foster mental wellness.

Action Steps:

- Launch the **Schools of Happiness (Be-Well Program)** in partnership with local schools, providing regular wellness workshops for students, teachers, and staff.
- Designate a **Teacher Appreciation Day** that incorporates mental health support activities, like stress management workshops or access to on-site wellness programs.
- Provide mental health support materials in schools, including access to mindfulness apps, emotional support services, and stress-reducing activities.

3. Community Mental Health Support Network

Objective: Establish a network of accessible mental health resources with a hotline for immediate support.

Action Steps:

- Create a **Mental Health Hotline** offering immediate access to support and information on available mental health services, professional contacts, and resources.
- Partner with local therapists, counselors, and mental health organizations to provide a robust network of resources and referrals.
- Host regular workshops on mental health topics such as coping with grief, supporting disabled children, conscious parenting, and understanding trauma.

Ongoing Programs to Maintain

- **FitCrest Initiatives:** FitCrest, FitCrest Day, and the 5K Run encourage daily healthy activities, promoting physical and mental wellness.

- **Group Fitness and Yoga:** Continue group classes that provide social engagement and physical health benefits.

- **Outdoor Activities and Wellness Center:** The upcoming Wellness Center at Aleyda's Mas Park will serve residents 50+, offering a dedicated space for wellness activities.

- **Support and Recreational Groups:**
 - **Pinecrest Pioneer Group** for residents 80+ to support active aging.
 - **STARS Spring and Summer Program** for youth, including those with special needs, to foster inclusion.
 - **Family Garden Day** and **Curious Gardener Workshops** for multi-generational engagement.
 - **Support Groups** for specific needs, such as Alzheimer's, creating safe spaces for sharing and support.



New Initiatives and Programs

1. Awareness and Engagement

- **Mental Health Awareness:**
 - Light up public spaces in green, the official mental health awareness color, during Mental Health Awareness Month and other events.
 - Consider wrapping village vehicles in green with mental health resources listed on them.
- **Special Interest Groups:**
 - Create interest groups within the community, such as rollerblading or walking groups, to foster social interaction and physical activity.
- **Community-Based Support Groups:**
 - Partner with volunteer therapists to offer support groups on grieving, trauma, and parenting special-needs children.
 - Expand emotional support dog programs to other facilities beyond police departments, making these animals available to interact with residents.

2. School and Family Engagement

- **Schools of Happiness (Be-Well) Program for Schools:**
 - Roll out the Schools of Happiness Program across all schools, incorporating mental health support resources and initiatives that build resilience among students and teachers.
- **Empathy Education for Children:**
 - Establish programs to teach empathy and social skills to young children, setting a foundation for positive mental health.
- **Events and Live Resources:**
 - Host live events, such as Zoom or Facebook webinars on mental health, offering resources on various topics.
 - Establish book clubs and provide reference books covering mental health, parenting, and trauma to foster community learning and support.
- **Movie Nights in the Park:**
 - Show films that address emotional well-being, like *Inside Out*, to open discussions on mental health in a relaxed setting.

New Initiatives and Programs

3. Combating Loneliness and Isolation

- **Senior Engagement Programs:**
 - **Adopt a Senior Program:** Encourage residents to “adopt” a senior for companionship and support, fostering intergenerational connections.
 - **Holiday Events:** Organize annual holiday dinners and events to help residents who may otherwise be alone celebrate in a communal setting.
- **Children and Senior Interaction Programs:**
 - Offer events like musical performances involving both children and seniors to build connections and reduce isolation.
- **Miracle League for Neurodivergent Residents:**
 - Reinstate the Miracle League, a sports league specifically designed for neurodivergent individuals, to promote inclusivity.

4. Volunteerism and Motivational Programs

- **Motivational Speaker Sessions:**
 - Host events with speakers who can share stories of resilience, overcoming challenges, and mental wellness.
- **Volunteer Training:**
 - Train community volunteers in mental health first aid to support others and create a compassionate environment.
- **HUB Partnerships:**
 - Partner with the HUB to access additional facilities for these events, allowing for a broader reach and more frequent programming.

EXAMPLE:

Implementation Timeline and Goals

Timeframe	Goal
Months 1-3	Launch the communication strategy for mental health awareness, promote the hotline, and begin engagement campaigns.
Months 3-6	Implement the Schools of Happiness (Be-Well) Program in schools and establish support groups, such as those for grief and trauma.
Months 6-12	Expand awareness activities like the green lighting initiative, launch “Adopt a Senior” and intergenerational programs, and hold the first Movie Night in the Park focused on mental health awareness.
Ongoing	Maintain FitCrest activities, group classes, and support groups while continuously expanding outreach, volunteer training, and educational events.

The Village of Pinecrest can create a transformative environment for mental health and wellness through these initiatives. By enhancing communication, removing barriers in schools, and providing robust community support, Pinecrest will foster a culture that embraces mental health as a vital component of overall well-being. This plan's collaborative and inclusive approach encourages active participation from all age groups, reinforcing a connected and resilient community dedicated to mental wellness.



E. Implementation Strategy

These actionable strategies provide a structured approach for turning recommendations into action while keeping the community actively engaged. By prioritizing transparency, collaboration, and accountability, the Village of Pinecrest can ensure its initiatives are effective, meaningful, and backed by strong support from residents.



1. Event to Present and Validate Findings

Objective: Share the results of this report **with** residents and invite their input to validate findings and prioritize initiatives.

- **Proposed Action:** Host an event, such as a *World Happiness Day* celebration, where residents can engage with the report findings through interactive workshops, discussions, and ranking exercises.
 - **Activities:**
 - Present key findings and recommendations from the report.
 - Facilitate ranking sessions where residents rate the perceived impact of various initiatives.
 - Gather qualitative feedback on the relevance and visibility of proposed projects.

Rationale: Engaging residents in this way ensures that efforts align with their needs and values, while reinforcing their connection to the Village's vision. This validation process also motivates the city team by demonstrating the tangible value of their work to the community.

2. Use Feedback to Develop an Implementation Timeline

- **Objective:** Establish a clear roadmap for action based on resident input.
- **Proposed Action:** Incorporate feedback from the validation event to create a phased timeline for implementing initiatives over the next 1-2 quarters.
 - **Steps:**
 - Identify projects that can be completed in the short term (1-2 quarters) and assign project leads for accountability.
 - Define clear milestones and deliverables for each initiative.
 - Establish measurable success criteria to evaluate the effectiveness of each initiative, such as resident satisfaction surveys, attendance rates, or environmental impact metrics.

Rationale: A structured timeline ensures that efforts are actionable and progress is visible, fostering momentum and confidence in the Village's ability to deliver on its commitments.

3. Create an Online Platform for Transparency and Engagement

- **Objective:** Build trust and maintain community engagement by allowing residents to track progress in real time.
- **Proposed Action:** Develop a dedicated website or online platform where residents can:
 - View project updates and timelines.
 - Connect with project leads and stakeholders for questions and feedback.

Access detailed information about ongoing and upcoming initiatives.

- Provide ongoing feedback or suggest new ideas.
- Celebrate completed projects with community stories and testimonials.

Rationale: Transparency and accessibility foster trust and active participation, ensuring residents feel involved in shaping the community's future.

4. Plan a Follow-Up Meeting to Share Progress and Set New Goals

- **Objective:** Maintain momentum by showcasing achievements and involving residents in planning the next phase.
- **Proposed Action:** Schedule a follow-up meeting after the initial phase of implementation to:

Share early results and celebrate successes.

- Highlight the impact of completed initiatives through data, testimonials, and visuals.
- Invite residents to weigh in on the next set of initiatives and prioritize future actions.

Rationale: Regular updates and opportunities for input reinforce residents' sense of ownership in the Village's progress, creating a continuous cycle of engagement and improvement.



PINECREST FLORIDA



FIND YOUR **bē**