

Village of Pinecrest

Americans with Disabilities Act

Transition Plan

CONTENTS

ADA Transition Plan	2
Introduction	2
Title I: Employment.....	2
Title II: Public Services	2
Title III: Public Accommodations	2
Title IV: Telecommunications	2
Title V Miscellaneous Provisions.....	2
ADA Transition Plan Requirements	3
Program Accessibility.....	4
Public Participation	4
Design and Regulation of Improvements	5
ADA Self-Assessment	5
BUILDINGS AND FACILITIES.....	5
BARRIERS WITHIN THE PUBLIC RIGHT OF WAY	6
Record Keeping.....	7
Notice under the Americans with Disability Act	7
Grievance Procedures.....	7
Complaint Forms	7

APPENDICES

Appendix A: Accessibility Evaluation Report for Pinecrest Gardens

Appendix B: Sidewalk Accessibility Transition Plan Table

Appendix C: Complaint of Discrimination Form

ADA TRANSITION PLAN

INTRODUCTION

The Village of Pinecrest has developed an Americans with Disability Act (ADA) Transition Plan to better serve its community and develop policies and practices for implementing physical pedestrian improvements within the public right of way of the Village. The goal is to provide safe and usable pedestrian facilities for all pedestrians, and to assure compliance with all federal, state and local regulations and standards.

The Americans with Disabilities Act (ADA), enacted on July 26, 1990, is a federal civil rights law that provides protection for all persons with disabilities against discrimination by public and private entities. The ADA extends similar earlier protections provided by Section 504 of the Rehabilitation Act of 1973. This legislation mandates that qualified disabled individuals shall not be excluded from participation in, denied the benefit of, or be subjected to discrimination under any program, service or activity. The Act also protects employees with disabilities, with certain protections and requires employers to make reasonable accommodations for applicants and employees with disabilities.

The ADA is divided into five parts, covering the following areas:

TITLE I: EMPLOYMENT

Under Title I, employers, including governmental agencies, must ensure that their practices do not discriminate against person with disabilities in the application, hiring, advancement, training, compensation or discharge of an employee, or in other terms, conditions and rights of employment.

TITLE II: PUBLIC SERVICES

Title II prohibits state and local government from discriminating against person with disabilities or from excluding participation in or denying benefits of programs series or activities to persons with disabilities. It is under this Title that this ADA Transition Plan has been prepared. The ADA Transition Plan is intended to outline the methods by which physical or structural changes will be made to affect the non-discrimination policies described in Title II.

TITLE III: PUBLIC ACCOMMODATIONS

Title III requires places of public accommodation to be accessible and usable by persons with disabilities. The term public accommodation as it applies to public agency refers to any privately funded and operated facility serving the public.

TITLE IV: TELECOMMUNICATIONS

Title IV covers regulations regarding private telephone companies, and requires common carriers offering telephone services to the public to increase the availability of interstate and intrastate telecommunications relay services to individuals with hearing and speech impairments.

TITLE V MISCELLANEOUS PROVISIONS

Title V contains several miscellaneous regulations, including construction standards and practices, provision for attorney's fees and technical assistance provisions. This plan provides the action items necessary to ensure compliance with ADA Statutes based on the Pinecrest Self-Assessment Evaluation.

The Village has various responsibilities under Title II of the ADA. Title II of the ADA is similar to Section 504 of the Rehabilitation Act of 1973 but differs in that Section 504 applies only to government agencies that receive federal financial assistance. The purpose of Section 504 is to ensure that no otherwise qualified individual with disabilities shall, solely by reason of disability, be discriminated against under any program or activity receiving federal financial assistance. The Village has been operating under the requirements of Section 504 for many years.

The public entity also is required to designate a person to be responsible for coordinating the implementation of ADA requirements and for investigating complaints of alleged noncompliance. As such, the Village's designated ADA Coordinator is:

Angela Gasca
Assistant Village Manager/ADA Coordinator
Village of Pinecrest
12645 Pinecrest Parkway
Pinecrest, Florida 33156
305.234.2121
305.234.2131 fax
ada@pinecrest-fl.gov

ADA TRANSITION PLAN REQUIREMENTS

According to ADA, a public agency is required to prepare and ADA Transition Plan if physical or structural modifications to facilities are required to provide access to programs or services. Title II of the ADA Regulates government agencies, with its primary goal being to ensure that all their programs and services are accessible to individuals with disabilities. The ADA Transition Plan is limited to evaluating physical barriers: however, an analysis of the programs and services is important to determine what physical changes are necessary. The ADA Transition Plan documents what action the Village will take to alter its facilities. The ADA requires that the ADA Transition Plan be submitted for public review before final approval and adoption by the appropriate regulatory agency.

Generally, the ADA Transition Plan lists existing barriers in the public rights-of-way under the Village's jurisdiction, and schedules which barriers to remove to provide access for individuals with disabilities to the Village programs. The Village is required to provide access to all of its programs, but is not required to remove all architectural barriers in all of its facilities. In addition to making physical improvement, government agencies can choose from various administrative solutions such as relocating or modifying a particular program, to obtain overall program access.

The ADA Transition Plan is required by Department of Justice (DOJ) rules to address the following aspects of accessibility:

- 1) If a public entity has responsibility or authority over streets roads or walkway, this ADA Transition plan shall include a schedule for providing curb ramps or other sloped areas where pedestrian walks across curbs, giving priority to a walkways serving entities covered by the ADA, including State and local government offices and facilities, transportation, place of public accommodation, and employer, followed by walkways serving other areas.
- 2) The ADA Transition Plan shall identify physical obstacles in the public entity's facilities that limit the accessibility of its programs or activities to individuals with disabilities

- 3) The ADA Transition Plan shall describe the methods that it will use to make the facilities accessible: and
- 4) The ADA Transition Plan shall specify the schedule for taking the steps necessary to achieve compliance with the ADA and if the time period of the ADA Transition Plan is longer than one year, identify steps that will be taken during each of the transition periods.

PROGRAM ACCESSIBILITY

The Rules and Regulations of the ADA describe the requirements for program accessibility (Code of Federal Regulations, Title 28, Part 35, Subpart D). A public entity shall operate each service, program or activity, when viewed in its entirety, so that it is accessible to and usable by individuals with disabilities. The ADA does not require the public entity to make all its existing facilities accessible, nor does it require a public entity to take any action that would fundamentally alter the nature of a service, program or activity. Also, it does not require implementation of the ADA that would result in undue financial and administrative burdens. In such cases where documentation is provided in keeping with strict procedures outlined in the ADA, there are various methods that may be appropriate for providing programs accessibility in lieu of making actual physical changes to facilities.

The first step in determining what structural changes to existing facilities are necessary to develop an understanding of the specific public program and activities occurring at existing facilities within the Village. This section attempts to describe the programs and activities in the public right of way. It should be noted that this section is not intended to be a self-evaluation as described in the ADA. A self-evaluation includes an analysis of all programs and services offered by a public entity.

The activity of using the public right of way may be considered a program in two different ways

- 1) Streets, sidewalks and curb ramps may be part of a continuous path of travel between activities or programs. At various public and private facilities located on adjacent properties.
- 2) Streets, sidewalks and curb ramps may themselves represent a program or public pedestrian activities that are essential to the usage and enjoyment of a city's built environment.

The Department of Justice's Title II Technical Assistance manual point out that the public entity's programs related to streets, sidewalks and curb ramps may be prioritized with respect to relative importance and frequency of usage. It further describes that program accessibility wouldn't require all streets, sidewalks and curb ramps to be fully accessible as required by current codes. A determination of what public rights-of-ways are programmatically required to be accessible may vary from jurisdiction to jurisdiction.

PUBLIC PARTICIPATION

The ADA states that a public entity is required to make available to applicants, participant, residents and other interested parties information regarding the ADA Transition Plan and its applicability to their services programs or activities of the public entity, and to apprise the public of the protection against discrimination afforded to them by the ADA. A public entity also is required to provide an opportunity for interested person, including individuals with disabilities or organizations representing individuals with disabilities, to participate in the development of the ADA Transition Plan by submitting comments and making specific recommendations. The ADA also requires that a copy of the draft ADA Transition Plan shall be made available for public inspection during formal public review period.

A copy of this Transition Plan will be published on the Village of Pinecrest website and the public will be invited to provide comments. The plan will be updated, as needed, based on the comments received. Comments on the plan

can be provided by the Village's ADA Coordinator in writing by letter or email to ada@pinecrest-fl.gov, in person or via phone at 305.234.2121. The Village will maintain a log of all comments registered.

The Village of Pinecrest recognizes that public participation is an important component in the development of this document and future improvements. Input from the community is encouraged through our website and postings at the Pinecrest Municipal Center.

DESIGN AND REGULATION OF IMPROVEMENTS

The Village of Pinecrest will adhere to the ADA design standards put forth by the Florida Department of Transportation Design Standards, and requirements of the Florida Building Code. The technical provisions of the Design Standards as well as the Florida Department of Transportation's Plans Preparation Manual, as related to ADA accessibility to public facilities, is adopted by reference as part of this report. Reference to Americans with Disabilities Act Accessibility Guidelines (ADAAG) have been used to determine considerations for accessible design.

ADA SELF-ASSESSMENT

The following section details the self- evaluation results for the Village of Pinecrest. Evaluations were undertaken in review of facilities and policies related to public buildings and facilities, including pedestrian facilities in the right-of way and curb ramps, employment effective communication and monitoring and reporting policies.

BUILDINGS AND FACILITIES

The Village of Pinecrest has performed an evaluation of ADA accessibility for existing public building. The Village currently has two buildings and two facilities which are ADA Compliant. After further evaluation the Village was able to identify four buildings/facilities that would require remedial action under this ADA Transition plan. Additionally, the Village owns Pinecrest Gardens, a historically designated botanical garden that has multiple buildings and facilities. The Village conducted a separate Accessibility Evaluation Survey specifically for this park and it is attached to this report as Appendix A.

The following is summary of Government Buildings, Public Buildings and Facilities identified that would require ADA remediation along with a schedule for completion and estimated cost. The agency will prioritize and integrate corrections/ modification with planned alterations as well as with existing structures. The official responsible for implementation of this plan is the Parks and Recreation Director.

TRANSITION PLAN TABLE 1

Location	Deficiency	Correction/ modification	Estimated Cost	Completion Schedule
Evelyn Greer Park	Restroom doors are not self-closing	Install closers or replace doors	\$600 - \$3,000	December 2023
Suniland Park	Restroom doors are not self-closing	Install closers or replace doors	\$600-\$3,000	December 2023
Flagler Grove Park	Restroom doors are not self-closing	Install closers or replace doors	\$600 - \$3,000	December 2023

Coral Pine Park	Accessible parking spaces are not located on the closest accessible facility entrance	Reconfigure Spaces	*see note below	February 2024
Coral Pine Park	Room signs do not have contrast between text and background, are not raised letters, do not include braille, are not mounted on the latch side of the doors, are not positioned properly	Install tactile signs and relocate to wall latch side of door or on the door itself on push side	*	February 2024
Coral Pine Park	Room signs do not have contrast between background and text, signs are not mounted so that characters are at least 40 inches above the floor	Reposition signs	*	February 2024
Coral Pine Park	Sign at restrooms are not positioned with an 18"x18" clear floor space below sign with door open at 45 degrees	Reposition signs or clear the space below signs	*	February 2024
Coral Pine Park	Restroom grab bar does not extend at least 12 inches from the centerline of the restroom compartment on one side (side wall)	Relocate grab bar	*	February 2024
Coral Pine Park	Restroom doors are not self-closing	Install self-closers	*	February 2024
Coral Pine Park	Restroom compartment is not at least 60" wide	Widen compartment	*	February 2024
Coral Pine Park	For floor mounted toilet - compartments are not at least 59 inches deep	Alter compartment	*	February 2024
Coral Pine Park	Toilet compartment must be at least 59 inches deep and 60 inches wide beyond doors that swing inward into compartment	Reverse door swing or alter compartment	*	February 2024

*Coral Pine Park is in the process of a capital improvement project which will address all of the ADA compliance issues. All of the costs associated with these items will be part of a lump sum bid.

BARRIERS WITHIN THE PUBLIC RIGHT OF WAY

An evaluation was undertaken to address ADA accessibility for existing barriers within the public right of way in the Village of Pinecrest. Sidewalks throughout the Village are generally well maintained; however, some sections present poor conditions such as cracks, uneven segments and similar issues. Appendix B of this plan details the segments that were identified that would require ADA remediation. The official responsible for implementation of

this plan is the Public Works Director. It is estimated the work will cost approximately \$400,000 to complete all of the remediation. The Village Manager is including this amount in the 2023-24 fiscal year proposed budget. If approved by Village Council, the work will be completed between October 1, 2023 and September 30, 2024.

Further, the Village of Pinecrest is committed to ensuring that any development or acquisition of additional public buildings or properties within the Village will undergo an evaluation to determine compliance with ADA Standards. If necessary, remedial actions would be undertaken to ensure full compliance with applicable federal, state and local statutes.

RECORD KEEPING

The ADA Coordinator will maintain permanent records, which include, but are not limited to, copies of the ADA complaints and lawsuits and related documentation, and records of correspondence to and from complainants, and ADA investigations. The ADA Coordinator shall be responsible for conducting annual reviews of ADA records and updating the Capital Improvements recommendations as necessary.

NOTICE UNDER THE AMERICANS WITH DISABILITY ACT

The Village of Pinecrest does not discriminate on basis of race, color, national origin, sex, age, religions, disability and family status. Those with question or concerns about nondiscrimination, those requiring special assistance under the American with Disabilities Act (ADA) or those requiring language assistance (free of charge) should contact the Title VI/Nondiscrimination Coordinator, Angela Gasca, at 305.234.2121 or email address ada@pinecrest-fl.gov.

GRIEVANCE PROCEDURES

The Village of Pinecrest has established a discrimination complaint procedure and will take prompt and reasonable action to investigate and eliminate discrimination when found. Any person who believes that he or she has been subjected to discrimination based upon race, color, national origin, sex, age, disability, religion, income or family status in any of the Village's programs, services or activities, may file a complaint with:

Angela Gasca
ADA Coordinator/Nondiscrimination Coordinator
12645 Pinecrest Parkway
Pinecrest, Florida 33156
ada@pinecrest-fl.gov
Phone: 305.234-2121
Fax: 305.234-2131

If possible, the complaint should be submitted in writing through the Complaint of Discrimination Form. If the complaint cannot be submitted in writing, the complainant should contact the ADA Coordinator for assistance. The Village will respond to the complaint within thirty (30) calendar days and will take reasonable steps to resolve the matter.

COMPLAINT FORM

The Village's Complaint of Discrimination Form is attached to this plan as Appendix C.

APPENDIX A: ACCESSIBILITY EVALUATION REPORT FOR PINECREST GARDENS

ACCESSIBILITY EVALUATION REPORT

for

PINECREST GARDENS VILLAGE OF PINECREST, FLORIDA



for
Ms. Yocelyn Galiano Gomez, ICMA-CA
Assistant Village Manager
Village of Pinecrest
12645 Pinecrest Parkway
Pinecrest, Florida 33156

Prepared by
Larry M. Schneider, AIA
4905 Midtown Lane
Suite 2313
Palm Beach Gardens, Florida 33418

August 4, 2010

**LARRY
M
SCHNEIDER
AIA**

Architect
Accessibility
Consultant

4905 Midtown Lane
Suite 2313
Palm Beach Gardens
Florida
33418

561.799.6942
fax: 561.799.6943

EMail: Larry@LMSArch.net

August 4, 2010

Ms. Yocelyn Galiano Gomez, ICMA-CA
Assistant Village Manager
Village of Pinecrest
12645 Pinecrest Parkway
Pinecrest, Florida 33156

**GENERAL ACCESSIBILITY CONSULTING SERVICES
FOR THE VILLAGE OF PINECREST, FLORIDA
RE: ACCESSIBILITY EVALUATION SURVEY FOR THE
VILLAGE OF PINECREST - PINECREST GARDENS, PINECREST, FLORIDA
PROJECT NO 10116.00**

Dear Ms. Gomez:

The following is our report providing you with our ADA survey/evaluation pertaining to the existing Pinecrest Gardens which is located at Pinecrest, Florida which outlines our opinions as to the condition of this facility as it relates to compliance with Part II and III of the Americans with Disabilities Act, Public Law 101-336, 28 CFR Part 35 and 36 - Nondiscrimination on the Basis of Disability by Public Accommodations and in Commercial Facilities and the requirements of the ADA Accessibility Guidelines for Buildings and Facilities - July 1, 1994. This report is based upon our site visit of June 27, 2010, regarding this property.

It is our opinion that this facility would fall under the requirements of Title II of the ADA. Therefore let us look at the applicable issues relating to a Title II facility.

Prior to the evaluation of this facility it is important to understand the requirements of the ADA as it relates to Title II entities. Under Title II requirements we have the following sections that have an impact upon the facilities and programs that are provided by the Village of Pinecrest, Florida:

§35.102 Application - (a) Except as provided in paragraph (b) of this section, this part applies to all services, programs, and activities provided or made available by public entities.

§35.104 Definitions - A facility means all or any portion of buildings, structures, sites, complexes, equipment, rolling stock or other conveyances, roads, walks, passageways, parking lots, or other real or personal property, including the site where the building, property, structure, or equipment is located.

Public entity means:

- (1) Any State or local government;
- (2) Any department, agency, special purpose district, or other instrumentality of a State or States or local government; and

AR 7443

Ms. Yocelyn Galiano Gomez, ICMA-CA
General Accessibility Consulting Services
For the Village of Pinecrest, Florida
re: Accessibility Evaluation Survey for the
Village of Pinecrest - Pinecrest Gardens, Pinecrest, Florida
Project No 10116.00
August 4, 2010
Page 2

(3) The National Railroad Passenger Corporation, and any commuter authority (as defined in section 103(8) of the Rail Passenger Service Act).

§35.130 General Prohibitions Against Discrimination - (a) No qualified individual with a disability shall, on the basis of disability, be excluded from participation in or be denied the benefits of the services, programs, or activities of a public entity, or be subjected to discrimination by any public entity. (7) A public entity shall make reasonable modifications in policies, practices, or procedures when the modifications are necessary to avoid discrimination on the basis of disability, unless the public entity can demonstrate that making the modifications would fundamentally alter the nature of the service, program, or activity.

§35.150 Existing Facilities - (a) General. A public entity shall operate each service, program, or activity so that the service, program, or activity, when viewed in its entirety, is readily accessible to and usable by individuals with disabilities. This paragraph **does not** -

(1) Necessarily require a public entity to make each of its existing facilities accessible to and usable by individuals with disabilities;

(2) Require a public entity to take any action that would threaten or destroy the historic significance of an historic property; or

(3) Require a public entity to take any action that it can demonstrate would result in a fundamental alteration in the nature of a service, program, or activity or in undue financial and administrative burdens. In those circumstances where personnel of the public entity believe that the proposed action would fundamentally alter the service, program, or activity or would result in undue financial and administrative burdens, a public entity has the burden of proving that compliance with §35.150(a) of this part would result in such alteration or burdens. The decision that compliance would result in such alteration or burdens must be made by the head of a public entity or his or her designee after considering all resources available for use in the funding and operation of the service, program, or activity, and must be accompanied by a written statement of the reasons for reaching that conclusion. If an action would result in such an alteration or such burdens, a public entity shall take any other action that would not result in such an alteration or such burdens but would nevertheless ensure that individuals with disabilities receive the benefits or services provided by the public entity.

(b) Methods. (1) General. A public entity may comply with the requirements of this section through such means as redesign of

**LARRY
M
SCHNEIDER
AIA**

Ms. Yocelyn Galiano Gomez, ICMA-CA
General Accessibility Consulting Services
For the Village of Pinecrest, Florida
re: Accessibility Evaluation Survey for the
Village of Pinecrest - Pinecrest Gardens, Pinecrest, Florida
Project No 10116.00
August 4, 2010
Page 3

equipment, reassignment of services to accessible buildings, assignment of aides to beneficiaries, home visits, delivery of services at alternate accessible sites, alteration of existing facilities and construction of new facilities, use of accessible rolling stock or other conveyances, or any other methods that result in making its services, programs, or activities readily accessible to and usable by individuals with disabilities. A public entity is not required to make structural changes in existing facilities where other methods are effective in achieving compliance with this section. A public entity, in making alterations to existing buildings, shall meet the accessibility requirements of §35.151. In choosing among available methods for meeting the requirements of this section, a public entity shall give priority to those methods that offer services, programs, and activities to qualified individuals with disabilities in the most integrated setting appropriate.

§35.151 New Construction and Alterations - (a) Design and construction. Each facility or part of a facility constructed by, on behalf of, or for the use of a public entity shall be designed and constructed in such manner that the facility or part of the facility is readily accessible to and usable by individuals with disabilities, if the construction was commenced after January 26, 1992.

(b) Alteration. Each facility or part of a facility altered by, on behalf of, or for the use of a public entity in a manner that affects or could affect the usability of the facility or part of the facility shall, to the maximum extent feasible, be altered in such manner that the altered portion of the facility is readily accessible to and usable by individuals with disabilities, if the alteration was commenced after January 26, 1992.

(c) **Accessibility standards. Design, construction, or alteration of facilities in conformance with the Uniform Federal Accessibility Standards (UFAS) (Appendix A to 41 CFR part 101-19.6) or with the Americans with Disabilities Act Accessibility Guidelines for Buildings and Facilities (ADAAG) (Appendix A to 28 CFR part 36 shall be deemed to comply with the requirements of this section** with respect to those facilities, except that the elevator exemption contained at §4.1.3(5) and §4.1.6(1)(j) of ADAAG shall not apply. Departures from particular requirements of either standard by the use of other methods shall be permitted when it is clearly evident that equivalent access to the facility or part of the facility is thereby provided.

Ms. Yocelyn Galiano Gomez, ICMA-CA
General Accessibility Consulting Services
For the Village of Pinecrest, Florida
re: Accessibility Evaluation Survey for the
Village of Pinecrest - Pinecrest Gardens, Pinecrest, Florida
Project No 10116.00
August 4, 2010
Page 4

- ▶ **Comment:** Section 35.151 provides that those buildings that are constructed or altered by, on behalf of, or for the use of a public entity shall be designed, constructed, or altered to be readily accessible to and usable by individuals with disabilities if the construction was commenced after the effective date of this part. Facilities under design on that date will be governed by this section if the date that bids were invited falls after the effective date. This interpretation is consistent with Federal practice under section 504.

Section 35.151(c) establishes two standards for accessible new construction and alteration. Under paragraph (c), design, construction, or alteration of facilities in conformance with the Uniform Federal Accessibility Standards (UFAS) or with the Americans with Disabilities Act Accessibility Guidelines for Buildings and Facilities (hereinafter ADAAG) shall be deemed to comply with the requirements of this section with respect to those facilities except that, if ADAAG is chosen, the elevator exemption contained at §§36.401(d) and 36.404 does not apply. ADAAG is the standard for private buildings and was issued as guidelines by the Architectural and Transportation Barriers Compliance Board (ATBCB) under title III of the ADA. It has been adopted by the Department of Justice and is published as Appendix A to the Department's title III rule in the Federal Register. Departures from particular requirements of these standards by the use of other methods shall be permitted when it is clearly evident that equivalent access to the facility or part of the facility is thereby provided.

Section 204(b) of the Act states that title II regulations must be consistent not only with section 504 regulations but also with "this Act." Based on this provision, the Department has determined that a public entity should be entitled to choose to comply either with ADAAG or UFAS.

Since it is our understanding that this facility has been declared a historical facility then the applicable requirements of the ADA Accessibility Guidelines for Buildings and Facilities - July 1, 1994 for historical facilities would apply and those requirements stated under section 35.150 Existing facilities for Title II which are the following -

- ▶ Historic preservation programs. In meeting the requirements of §35.150(a) in historic preservation programs, a public entity shall give priority to methods that provide physical access to individuals

**LARRY
M
SCHNEIDER
AIA**

Ms. Yocelyn Galiano Gomez, ICMA-CA
General Accessibility Consulting Services
For the Village of Pinecrest, Florida
re: Accessibility Evaluation Survey for the
Village of Pinecrest - Pinecrest Gardens, Pinecrest, Florida
Project No 10116.00
August 4, 2010
Page 5

with disabilities. In cases where a physical alteration to an historic property is not required because of paragraph (a)(2) or (a)(3) of this section, alternative methods of achieving program accessibility include -

- (i) Using audio-visual materials and devices to depict those portions of an historic property that cannot otherwise be made accessible;
- (ii) Assigning persons to guide individuals with handicaps into or through portions of historic properties that cannot otherwise be made accessible; or
- (iii) Adopting other innovative methods.

In addition Regulation: §36.405 Alterations: Historic preservation states that alterations to buildings or facilities that are eligible for listing in the National Register of Historic Places under the National Historic Preservation Act (16 U.S.C. 470 et seq.), or are designated as historic under State or local law, shall comply to the maximum extent feasible with section 4.1.7 of appendix A to this Part. In addition if it is determined under the procedures set out in section 4.1.7 of appendix A that it is not feasible to provide physical access to an historic property that is a place of public accommodation in a manner that will not threaten or destroy the historic significance of the building or facility, alternative methods of access shall be provided pursuant to the requirements of subpart C of this part.

Furthermore we have made no analysis or survey of the following:

- ▶ Concealed or unknown conditions, or characteristics of the facility.
- ▶ Those parts of the ADA which deal with employment policies and practices, customer services, transportation issues and telecommunications.
- ▶ Areas that we did not nor were not able to review.

With these statements as a background, let us now look at the facility in question.

Sincerely,

Larry M. Schneider, AIA
Principal
LMS/ljs

Copyright 2009 by Larry M. Schneider, AIA. All rights reserved. Printed by: Larry M. Schneider, AIA. Date: 8/4/2010.

EXECUTIVE SUMMARY
VILLAGE OF PINECREST - PINECREST GARDENS
VILLAGE OF PINECREST, FLORIDA
ACCESSIBILITY EVALUATION SURVEY

The following are some of the main findings/recommendations as it relates to this facility:

1. There are two sets of toilet rooms that are available to the public, one set by the main entry and one set by the seating and playground area on the north side of the park.
 - a. We would recommend the consideration of notifying the public that the accessible toilet rooms are located at the main entry area and provide signage at the other toilet rooms indicating the location of the accessible toilet rooms.
 - b. We would also recommend that this be identified on a park site plan that would given out to the public as their park plan as well as on the existing signage posts within the park.
2. There are numerous walkways that have been constructed and that have been impacted by the tree root system and that have bridges going over waterways that were not considered in their initial design as it relates to accessibility compliance.
 - a. We would recommend the identification of the accessible route within the park that provides the least slope possible with access to the different elements of the park.
 - b. We would also recommend that this be identified on a park site plan that would given out to the public as their facility park plan.
3. For those walkways that do have a slope, we would recommend that handrails be installed on both sides of those ramps that would be identified as having a slope greater than five percent where the rise is greater than eight inches. That these handrails be at 36 inches above the walkway and further comply with section 4.8.5 of the ADA Standards for the handrail or consider the reworking of the walkways that can be modified without disrupting the integrity of the park landscaping.
 - a. This includes the ramp at the southeast side that provides access to the upper area that overlooks the pond on the north side, which in turn provides access to the seating and concession area.
 - b. The ramp on the west side of the upper seating area to provide access to the playground and petting zoo areas.
4. At the stairs that provide access to an area that is not connected by a ramp, where required, provide accessible compliant handrails on those stairs.
5. At the Banyan Bowl we would recommend that the accessible seating area be provided with companion seating to serve each accessible seating area.
 - a. This can be accomplished by the provision of providing folding chairs for those guests whom are accompanying a wheelchair user.
6. We would recommend the addition of accessible tables at strategic seating areas where existing tables are provided; i.e. - the upper seating areas by the concession stand.
7. We would recommend the modification of the walking surface at the playground area to be a surface that provides accessibility to this element.

Item	Area	Issue	ADA Code Reference	Proposed Corrections	Photo
1.	Accessible Parking Spaces	There are 8 accessible parking spaces located in one of the parking areas. The accessible parking spaces are at an angle. Signage is provided at all of the accessible parking spaces. Two of the accessible parking space signage does not provide the "fine"; however they would be in compliance with the applicable ADA Requirements.		Informational	0452 0453 0454 0455 0456 0457 0458 0459 0460 0461 0462 0463 0464 0465 0466 1003 1004 1005 1006 1007 1008 1009 1010 1011 1012 1013 1014 1015
2.	Total Accessible Parking Spaces	Based upon the count of 8 accessible parking spaces the park may provide up to 400 parking spaces. The total count of available parking is less than 400 parking spaces.		Informational.	
3.	Dimensions Of Accessible Parking Spaces	The accessible parking spaces are 12 foot wide based upon centerline of the blue stripe to centerline of the blue stripe. The access aisle is 60 inches wide; based upon the centerline of blue to the centerline of the blue. Based upon Florida Law a person cannot go behind parked cars. Due to that this is an existing parking lot under the ADA this would not be an issue and also under the exemption under Florida Law this would not be an issue. The only way to rearrange this would be to readjust all of the parking spaces to different areas.		Informational	0462 0463 0464 0465 0466
4.	Trash Receptacle At Entry Drive Area	The trash receptacle is not on an accessible path of travel. Consider providing a concrete pad and/or relocating the trash receptacle or provide an additional trash receptacle by the building. There are trash receptacles by the front of the building area but they are no along the accessible path of travel. Note the two trash receptacles by the entry drive area.	4.3.2(2) 4.2.4.3 4.5.1	Provide at least one accessible route to facilities, elements and spaces that are on the same site. At the element or space provide a clear floor or ground space area for wheelchairs in compliance with 4.5; the area shall be stable, firm, and slip-resistant and further comply with 4.5 requirements.	0467 0468

Item	Area	Issue	ADA Code Reference	Proposed Corrections	Photo
5.	Passenger Drop Off Area	A passenger drop off area is provided..	4.6.6	Provide an area that is 20 feet long for the space [this condition is already there and provided].	0470
6.	Curb Ramp On The West Side At Entry Area	The curb ramp on the west side has a slope at the bottom of the ramp where it abuts the pavement of 10.1%. Recommend to reworking this curb ramp to be no more than 1:12 and then rework it where it abuts the walkway so there is no vertical offset. The slope at the upper portion of the curb ramp is 10%. There is a vertical offset between the two areas of ¼ inch.	4.7.2 4.8.2 4.3.8	Slopes of curb ramps shall comply with 4.8.2; provide no slope greater than 8.3%. Transitions from ramps to walks, gutters, or streets shall be flush and free of abrupt changes. Maximum slopes of adjoining gutters, road surface immediately adjacent to the curb ramp, or accessible route shall not exceed 1:20 or 5%. Rework the ramp to provide no slope greater than 1:12 (8.3%) slope. Changes in levels along an accessible route shall comply with 4.5.2. If an accessible route has changes in level greater than ½ inch, then a curb ramp, ramp, elevator, or platform lift shall be provided.	0475 0481
7.	Curb Ramp On The East Side At The Entry Area	The curb ramp that is located on the east side has a slope of 18.2%. If this is going to be used as an accessible curb ramp recommend that this curb ramp be cut out and provide an appropriate curb ramp. If this is not going to be maintained as an accessible curb ramp remove the blue and use the curb ramp on the west side. Another slope reading is 28.4%.	4.8.2	Consider this ramp as the non-accessible ramp/route and use the ramp on the west end as the accessible ramp/entry point.	0470 0471 0472 0473 0474
8.	Walkway At The West End	From the curb ramp at the west end following the walkway, the cross slope is 1.3% and 0.5%.		Informational	0482 0483
9.	Path Of Travel From The Street On The South Side Of Pinecrest Gardens	At the street on the south side of the Pinecrest Gardens site there is no sidewalk on the north side of the street. The sidewalk is located on the south side of the street.		Informational	0484 9854 0486 0487
10.	Seating Area – South Side By The Entry	On the south side there is a seating area. There would be a space for a wheelchair to access and park at this condition.		Informational	0488 0489 0490
11.	Counter At The Entrance To The Facility	As a person enters the facility there is a ticket counter at a height of 42½ inches above the floor. This counter was from the facility when it was operated as The Parrot Jungle. The counter at this time is non functional and it is not used. Therefore there is no issue for requirements for accessibility to this element.		Informational – If this area becomes operational consider installing a flip-up shelf no higher than 36 inches above the walkway and no less than 36 inches in length. Consider a depth of 6 to 8 inches for this flip-up shelf.	0491 0492 0493 0494 0495
12.	Signage By The Stairs Going Up To The Administration Office	Signage by the stairs going up to the Administration Office states "For Assistance Please Ring Bell". There is additional signage that states "Wheelchairs Are Available Upon Request. Please See Park Service Aide For Assistance".	4.2.4 Figure 4	Be sure the clear floor space is available by the bell for a person to be able to push the button for the bell. Provide a minimum of a 30x48 inch clear floor space area positioned for a forward or parallel approach to an object.	0496 0497 0498
13.	Hibiscus Room	As a person enters the facility, on the west side there is the Hibiscus Room. Recommend providing the appropriate accessible signage on the glass indicating the name of the room in raised letters and Braille. The signage is currently located above the door.	4.1.3(16) 4.30.4 4.30.5 4.30.6 4.30.7	Signs, which designate permanent rooms and spaces, shall comply with 4.30. Provide signage in raised letters, Braille and pictograms, in contrasting colors; mount the signage on the adjacent wall of the latch side of the door at a height of 60 inches to the centerline of the sign from the finished floor. Facilities and elements required to be identified as accessible by 4.1 shall use the international symbol of accessibility. The symbol shall be displayed as shown in Figure 43(a). The characters and background of signs shall be eggshell, matte, or other non-glare finish.	0499 0500 0506

Item	Area	Issue	ADA Code Reference	Proposed Corrections	Photo
14.	Fire Extinguisher Cabinet Inside The Hibiscus Room	Inside the Hibiscus Room there is a fire extinguisher cabinet located in the corner. Recommend lowering down the fire extinguisher cabinet to be at the appropriate reach range. The current mounting height to access the key lock is at a height 49½ inches above the floor; the centerline of the box is 59 inches above the floor. This fire extinguisher is one that a person would unlock and lift up. Consider lowering the fire extinguisher down, so the centerline of the fire extinguisher box would be at a height of 48 inches.	4.27.3 Figure 5 or 6	Consider lowering down the controls to provide the appropriate reach range to comply with Figure 5; maximum of 48 inches.	0501 0502 0503
15.	Thermostat In Hibiscus Room – West Wall	The thermostat on the west wall is at a height of 60 inches above the floor to the controls.	4.27.3 Figure 5 or 6	EXCEPTION: These requirements do not apply where the use of special equipment dictates otherwise or where electrical and communications systems receptacles are not normally intended for use by building occupants.	0504 0505 0507 0508
16.	Alarm System Hibiscus Room – East Wall	On the east wall there is an alarm system. The control is at 62 inches above the floor.	4.27.3 Figure 5 or 6	EXCEPTION: These requirements do not apply where the use of special equipment dictates otherwise or where electrical and communications systems receptacles are not normally intended for use by building occupants.	0509
17.	Kitchen Area Serving The Hibiscus Room	There is a kitchenette available if a person rents the space.		Informational	0518 0519 0520 0521
18.	Kitchenette – Hibiscus Rom	There is a door located on the south side which is accessing to the kitchenette. The floor is sloped at that door. Therefore the accessible entrance in and out of the kitchenette is through the Hibiscus Room. The slope at this door is 15.2%.	4.13.6 4.1.3(8)(d)	There is a policy and procedure noting the location of the accessible entrance to the kitchen is through the Hibiscus Room. Entrances which are not accessible shall have directional signage complying with 4.30 which indicates the location of the nearest accessible entrance.	0522 0523 0524 0525
19.	Cypress Hall	Recommend providing the appropriate accessible signage in raised letters and Braille by the entry door. Cypress Hall use to be the cafeteria. It is no longer an active space. The space is not used by anyone.	4.1.3(16) 4.30.4 4.30.5 4.30.6 4.30.7	Signs, which designate permanent rooms and spaces, shall comply with 4.30. Provide signage in raised letters, Braille and pictograms, in contrasting colors; mount the signage on the adjacent wall of the latch side of the door at a height of 60 inches to the centerline of the sign from the finished floor. Facilities and elements required to be identified as accessible by 4.1 shall use the international symbol of accessibility. The symbol shall be displayed as shown in Figure 43(a). The characters and background of signs shall be eggshell, matte, or other non-glare finish.	0510 0511 0512 0513 0514
20.	Entrance Into The Cypress Hall	The entrance into Cypress Hall at the door has a slope of 7.8% in front of the door.	4.13.6 4.1.3(8)(d)	Entrances which are not accessible shall have directional signage complying with 4.30 which indicates the location of the nearest accessible entrance. Recommendation is to use the doors by the main entry to access this space.	0515 0516 0517
21.	Signage At The Entrance At Pinecrest Gardens	The signage at the entrance is at a height of 79 inches of the floor; the minimum required is 80 inches above the floor.	4.4.2 Figure 8(b)	Raise the signage at the entrance at Pinecrest Gardens to a minimum of 80 inches from the floor to prevent a visual impaired person from walking into it and hitting their head.	0526 0527
22.	Bracing Along The Walkway To The West Of The Entry	Currently there is some bracing put up along the walkway to the west of the main entry. The issue is the diagonal bracing is a protruding object. Recommend providing a barrier for protection underneath it for a person who is visual impaired would not walk into it.	4.4.1 Figure 8	Provide a barrier to prevent a vision impaired person from walking into the bracing or remove the bracing.	0529 0530

Item	Area	Issue	ADA Code Reference	Proposed Corrections	Photo
23.	Toilet Rooms Mens Accessible Toilet Room	The overhead signage provided is 2 inch high lettering. The current ADA requirement is 3 inches; however the new ADA Standards will allow 2 inch high lettering. Recommend providing the appropriate signage by the entry door/area for the mens toilet room. There are three urinals, three toilet stalls and three lavatories.	4.1.3(16) 4.30.4 4.30.5 4.30.6 4.30.7	Signs, which designate permanent rooms and spaces, shall comply with 4.30. Provide signage in raised letters, Braille and pictograms, in contrasting colors; mount the signage on the adjacent wall of the latch side of the door at a height of 60 inches to the centerline of the sign from the finished floor. Facilities and elements required to be identified as accessible by 4.1 shall use the international symbol of accessibility. The symbol shall be displayed as shown in Figure 43(a). The characters and background of signs shall be eggshell, matte, or other non-glare finish. Characters and numbers on signs shall be sized according to the viewing distance from which they are to be read.	0532 0533 0534
24.	Mens Accessible Toilet Room Common Area	The lower mirror is mounted at a height of 41 inches above the floor to the reflective surface. The pull device for the baby changing station is 46 inches above the floor to the pull. The pull device for the baby changing station requires for a person's fingers to pull it down.	4.19.6 Figure 31 4.27.4	Consider lowering the mirror to comply with Figure 31, maximum of 40 inches above the floor to the reflective surface of the mirror. Modify the controls to the baby changing station to not require tight grasping, pinching or twisting of the wrist to operate. Consider the installation of a wire ("C") pull or a strap like the end of a dog leash handle.	0535 0536 0537 0538 0539 0540 0541 0542 0543 0544 0545 0546 0547 0559 0560
25.	Mens Accessible Toilet Stall	There is an angled wall in the mens accessible toilet stall. The side grab bar to the outer edge from the centerline of the water closet is 18 3/4 inches. The length of the side grab bar is 54 inches. The toilet paper dispenser is located on the back wall verses the side.	4.17.3 Figure 30	Modify the accessible toilet stall to comply with Figure 30 in size and arrangement. A consideration is to install a toilet partition system or a partial wall to get the toilet paper dispenser on the side wall by the water closet. The grab bar can then be attached to this element.	0548 0549 0550 0551 0552 0553 0554 0555 0556 0557 0558
26.	Drinking Fountain Between the Mens And Womens Toilet Room	The water spout height is 36 inches above the floor. There is no high drinking fountain. An optional solution is to provide a high drinking fountain or provide a cup dispenser with a trash receptacle for a person who cannot bend over.	4.1.3(10)	Provide a drinking fountain at a raised height (42 inches above the floor to the spout) or provide a cup dispenser for a person who cannot bend to resolve the issue of the hi/low drinking fountain as an alternate solution.	0561 0562
27.	Womens Accessible Toilet Room	There is an overhead signage for the womens toilet room. The lettering for the womens toilet room has 2 inch high lettering. There are three lavatories, a baby changing station and nine toilet stalls.		Informational	0563 0564 0566

Item	Area	Issue	ADA Code Reference	Proposed Corrections	Photo
28.	Womens Toilet Room Common Area	The pull device for the baby changing station is 45½ inches above the floor. The accessible lavatory faucet located in the center has a push control and stays on for a time of 6 inches. Recommend adjusting the lavatory faucet control to remain on for a minimum of 10 seconds.	4.27.4 4.19.5	Modify the controls for the pull device for the baby changing station to not require tight grasping, pinching or twisting of the wrist to operate. Consider the installation of a wire ("C") pull or a strap like the end of a dog leash handle. If the lavatory faucet is push control adjust the control to remain on for a minimum of 10 seconds and to require no greater than 5 lbf of pressure to operate.	0565 0567 0568 0569 0570 0571 0572 0573 0574 0575 0576 0577 0578 0579 0580 0581 0582
29.	Womens Toilet Room Accessible Toilet Stall	The toilet paper dispenser is located 40½ inches from the back wall; located 12 inches to the centerline off from the front of the toilet. The toilet stall dimension depth is a dimension of 59 inches. The accessible toilet stall width is 66 inches.	4.17.6 Figure 30	Locate the toilet paper dispenser in a toilet stall to comply with Figure 30, a minimum of 19 inches above the floor and a minimum of 1½ inch below the side grab bar and a maximum of 36 inches from the rear wall to the outer edge.	0583 0584 0585 0586 0587 0588 0589 0590 0591 0592 0593
30.	Womens Toilet Room 6 th Ambulatory Toilet Stall	There is no ambulatory toilet stall provided. The toilet stall that is located directly by the accessible toilet stall is 33 inches in width. The other toilet stalls appear to be 33 inches in width. There is a toilet stall that is 37 inches in width; however the water closet is located 20½ inches from the side wall. The door opening width for this toilet stall is a dimension of 22½ inches. Recommend providing an ambulatory accessible toilet stall. The depth of the toilet stall is 60¼ inches	4.22.4 4.13.5 Figure 24 4.17.6 Figure 30(d)	When 6 or more toilet stalls are provided in addition to the accessible toilet stall complying with 4.17.3, at least one toilet stall 36 inches wide with an outward swinging self-closing door and parallel grab bars complying with Figure 30(d) shall be provided. Provide parallel side grab bars on both sides of the water closet; minimum of 42 inches in length, 54 inches from the back wall, minimum of 33 inches and a maximum of 36 inches from the floor to the centerline of the grab bars. Modify the toilet stall that is a dimension of 37 inches. Relocated the water closet to comply with Figure 30, 18 inches from the side wall. Modify the toilet stall door to comply with Figure 24 providing a minimum of a clear 32 inch opening width. Provide side grab bars to comply with Figure 30. Side grab bar to be a minimum of 42 inches in length, mounted 12 inches from the back wall at a minimum of 33 inches to a maximum of 36 inches to the centerline of the grab bar from the floor.	0574 0575 0576 0577 0578 0579 0580 0581 0582

Item	Area	Issue	ADA Code Reference	Proposed Corrections	Photo
31.	Access To The Banyan Bowl On The South Side	The slope of the path of travel to the Banyan Bowl is 4.6% and 5.0%. The slope at the gates is 5.0% and 6.1%. The next reading up is a slope of 5.3%, 5.2% and the slope up by the seating area is 3.4%.	4.13.6 Figure 25	Maintain the gates open during show time or when activities are occurring in the bowl area; which we understand is the current policy.	0599 0600 0601 0602 0603 0604 0605 0606 0607 0608 0609 0610 0611 0612
32.	Seating Area At The Banyan Bowl	There are 12 rows of seating available with the accessible seating located at the first level. Consider 14 feet 5 inches for the accessible seating area; which would be 173 inches. The next area that could be provided is 74 inches in width; this would be 6 foot 2 inches for the other seating. There are no companion seats provided. Recommend providing folding chairs for companion seats. On the other side consider 6 foot 6 inches or 78 inches and a length of 168 inches or 14 feet for seating areas that would be available. The Banyan Bowl has 534 seating positions. The requirement would be to provide 7 accessible seating positions.	4.33.1 4.33.2 4.33.3 4.33.4	Provide accessible seating to comply with 4.1. Provide the minimum clear floor spaces per Figure 46, minimum of 33 inches per wheelchair. Wheelchair areas shall be an integral part of any fixed seating plan and shall be provide so as to provide people with physical disabilities a choice of admission prices and lines of sight comparable to those for members of the general public. At least one companion fixed seat shall be provided next to each wheelchair seating area. When the seating capacity exceeds 300, wheelchair spaces shall be provided in more than one location. Readily removable seats may be installed in wheelchair spaces when the spaces are not required to accommodate wheelchair users. The ground or floor at wheelchair locations shall be level and shall comply with 4.5.	0613 0614 0615 0616 0617 0618 0619 0633 0634 0992
33.	Stairs Going Up To The Bleachers At The Banyan Bowl	There are three sets of stairs going to the bleachers. None of the stairs have handrail extensions. The handrail heights are around 35 inches. Recommend to consider the end stairs providing the appropriate handrail extensions.	4.9.4	Stairways shall have handrails on both sides of the stairs. The inside handrail on switchback stairs shall always be continuous. If handrails are not continuous, they shall extend at least 12 inches beyond the top riser and at least 12 inches plus the width of one tread beyond the bottom riser. At the top, the extension shall be parallel with the floor or ground surface. At the bottom, the handrail shall continue to slope for a distance of the width of one tread from the bottom riser; the remainder of the extension shall be horizontal.	0623 0624 0625 0626 0627 0628 0629
34.	Performance Area At The Banyan Bowl	There is a performance area that is available which is currently mulch and hard compacted earth. It is our understanding there is a consideration of building a platform at this area to provide a "stage". Recommend if this occurs an accessible path of travel is provided to access the stage.	4.1.3(1)	A minimum of at least one accessible path of travel shall connect accessible building or facility entrances with all accessible spaces and elements within the building or facility.	0620 0621 0622 0631 0632
35.	Dome Over The Banyan Bowl	Banyan Bowl has a dome over it to protect the seating and the performance.		Informational	0630
36.	Entrance To The Banyan Bowl	The entrance to the Banyan Bowl is located on the north and south.		Informational	
37.	Access By The Doors From The North Side	The slope of the walkway by the doors from the north side going up is 2.8%, 3.9%, 3.9%, 5.4% (at the gate area). Pass the gate area the slope of the walkway is 3.4%. Either side could be accessible.	4.13.6 Figure 25	Provide a level and clear landing within the clear floor space area in front of the gate to comply with Figure 25. The ground or floor at wheelchair locations shall be level and shall comply with 4.5, or maintain the gates open during show time or when activities are occurring in the bowl area.	0635 0636 0637 0638

Item	Area	Issue	ADA Code Reference	Proposed Corrections	Photo
38.	Light Fixtures On The Wall By The Toilet Rooms	The building where the toilet rooms are located there are some light fixtures that are on the walls. The light fixtures are protruding objects. The light fixtures are less than 80 inches above the ground and they protrude out more than 4 inches. The recommendation is provide a potted plant or a trash receptacle underneath them to prevent a vision impaired person from walking into the lighting fixtures.	4.4.2 Figure 8(b)	Modify the object to provide a minimum of 80 inches above the floor or provide a barrier to prevent a vision impaired person from walking into the unit such as a potted plant or trash receptacle.	0639 0640 0641 0642 0643 0644 0645 0646 0647
39.	Fan On West Side – Protruding Object	On the west side there is a fan that is 77 inches above the floor to the bottom of the unit. The fan protrudes out a distance greater than four inches.	4.4.2 Figure 8(b)	Modify the object to provide a minimum of 80 inches above the floor or provide a barrier to prevent a vision impaired person from walking into the unit such as a potted plant or trash receptacle. Consider adjusting the fan upward.	0648 0649 0650
40.	Signage To "Colonnades, Playground, Petting Zoo, Butterfly Exhibits, Splash, Imaginary Station, Lakeview Terrace, Banyan Bowl, Restroom and Exit"	The signage that says the access to "Colonnades, Playground, Petting Zoo, Butterfly Exhibits, Splash, Imaginary Station, Lakeview Terrace, Banyan Bowl, Restroom and Exit" is at a height of 80 inches above the floor to the bottom of the signage.		Informational	0651 0652
41.	Light Fixtures On Columns Along The Path Of Travel Going To Colonnades, Playground, Petting Zoo And Butterfly Exhibit Area	On the walkway on the columns there is a light fixture that is 77 inches above the floor and protrudes out 6 inches. The light fixtures would be allowed to protrude out 12 inches because they are on columns. Therefore the light fixtures located on the columns would not be identified as a protruding object.		Informational	0653 0654 0655 0656
42.	Group Of Structures – South Side	There are a group of structures on the south side of the walkway that have little holes - opening. The path of travel at this point is not an issue for cross slope or the slope of direction of travel.		Informational	0657
43.	Signage For Restrooms	At the post that has signage that indicates restrooms, recommend providing another sign stating "Restrooms" with the logo on it. This is to identify where the accessible toilet rooms are located. The signage should say "Restrooms Are By The Main Entry". Recommend modifying the text.	4.1.6(3)(e)(iii)	When an existing toilet room is not made accessible provide signage indicating the toilet room is not accessible and signage indicating the location of the nearest accessible toilet room within the facility.	0662

Item	Area	Issue	ADA Code Reference	Proposed Corrections	Photo
44.	Stairs Going Up To The Dining Seating Area – Northwest Corner Of The Property	There are a set of stairs going up to a dining seating area at the northwest corner of the property. The stairs going up is by the concession tower, playground and restroom signage. The handrail is located only on one side of the stairs. Handrails should be located on both sides of the stairs. The stairs are damaged. Need to confirm if there is alternate path of travel for access to this area. The handrail heights are at 28½ inches and 28 inches above the riser for one handrail.	4.9.4 4.1.3(4)	Stairways shall have handrails on both sides of the stairs. The inside handrail on switchback stairs shall always be continuous. If handrails are not continuous, they shall extend at least 12 inches beyond the top riser and at least 12 inches plus the width of one tread beyond the bottom riser. At the top, the extension shall be parallel with the floor or ground surface. At the bottom, the handrail shall continue to slope for a distance of the width of one tread from the bottom riser; the remainder of the extension shall be horizontal. NOTE: Interior and exterior stairs connecting levels that are not connected by an elevator, ramp, or other accessible means of vertical access shall comply with 4.9.	0663 0664 0665 0666 0667 0668 0669 0670 0671 0672
45.	Set Of Stairs - Path Of Travel Going East	Going east the path of travel will take you to another set of stairs. The accessible route is further to the east side. The stairs in question are by the signage that says "Meadow, Banyan Bowl and Exit".	4.1.3(8)(d)	Entrances which are not accessible shall have directional signage complying with 4.30 which indicates the location of the nearest accessible entrance.	0673 0674 0675 0676 0677 0678 0679
46.	Stairs At Northwest Corner To Upper Tier Area Where Picnic Tables Are Located	The stairs at the northwest corner takes you down another winding path of travel to a set of stairs that would get you to an upper tier area where the picnic tables are located. This is not an accessible route to that area.	4.1.3(8)(d)	Entrances which are not accessible shall have directional signage complying with 4.30 which indicates the location of the nearest accessible entrance.	0680 0681 0682
47.	Accessible Route On East Side To Upper Tier Area Where Picnic Tables Are Located	The accessible route would be further to the east side and we would recommend that it be noted accordingly along the path of travel and/or the tour map.	4.1.3(8)(d)	Entrances which are not accessible shall have directional signage complying with 4.30 which indicates the location of the nearest accessible entrance.	0683
48.	Stairs To Lakeview Terrace	There is a set of stairs that takes a person to the Lakeview Terrace.	4.1.3(8)(d)	Entrances which are not accessible shall have directional signage complying with 4.30 which indicates the location of the nearest accessible entrance.	
49.	Ramp On East Side Of The Lakeview Terrace	On the east side of the Lakeview Terrace there is a ramp up to this area. Since this is historical the recommendation would be to provide handrails on both sides of this ramped walkway. Recommend core drill the slab and put the handrails in and off of away from the coral rock wall. The ramp is at the intersection that says, "Splash And Play, Concession Tower, Playground, Petting Zoo, Banyan Bowl, and Restroom And Exit". The slope at the bottom is 9.1%, 8.3%, 7.9% and 4.3%. It varies throughout this area depending upon a person's path of travel. Recommend adding handrails on both sides of this path of travel from. At the top there is a pond with lilies and gold fish in it. There is a building and a large open area.	4.8.5 Figure 17	Provide handrails on both sides of the ramp to comply with Figure 17: handrails shall extend at least 18 inches beyond the top and bottom of the ramp segment and shall be parallel with the floor or ground surface. The clear space between the handrails and the wall shall be 1½ inch. The top of handrails gripping surfaces shall be mounted between 34 and 38 inches above the ramp surface. The gripping surface shall be continuous. OR consider the installation of a wheelchair lift to provide access to the Lakeview Terrace with the location of this lift to be determined.	0684 0685 0686 0687 0688 0689 0690 0691 0692 0693 0694 0695

Item	Area	Issue	ADA Code Reference	Proposed Corrections	Photo
50.	Lakeview Terrace Covered Walkway Overlooking The Lake On The North Side	Lakeview Terrace has an area that is a covered area overlooking the lake on the north side. The path of travel slopes from south to north going down towards the wall. There is a cross slope at certain areas of 5.6% and 6.1%		Informational	0697 0698 0699 0701 0702 0703 0704
51.	Cross Slope At The Cover Walkway Over Lakeview Terrace	At the cover walkway at Lakeview Terrace by the wall there is a cross slope issue. The issue would be a person would go east to west or west to east and turn 90 degrees to go to the wall. If a person went along the wall along Lakeview Terrace there would be a cross slope issue for the path of travel. The cross slope by the south wall is 1.5%.		Informational	0705 0706
52.	East End – Roofed Area	At the east end along the walkway there is a roofed area. At the southwest corner there is a bougainvillea that would be classified as a protruding object. Recommend providing some material around it so a person who is vision impaired would not walk into it.	4.4.1 Figure 8	Modify the object to provide a minimum of 80 inches clear above the floor or provide a barrier to prevent a vision impaired person from walking into the unit. Consider trimming the plant to adjust its growth pattern.	0707
53.	Tables And Benches – South Section By The Concession Stand	Continue westerly a person would go to the south section by the concession stand and the seating area. The recommendation is to add an accessible table. There are twelve tables in the south section.	4.32.3 Figure 45 4.32.4	Provide an accessible table with the knee clearance being a minimum of 27 inches high, a minimum of 30 inches wide, and a minimum of 19 inches deep to comply with Figure 45. The height of the accessible table shall be from 28 inches to 34 inches above the floor.	0708 0709 0710
54.	Concession Stand Counter– North Side	The concession stand counter on the north side is at a height of 38 inches above the floor. At the concession stand there is a counter at the south side at a height of 38 inches above the floor.	7.2	Lower the counter to be a maximum of 36 inches in height and a minimum of 36 inches in width or install a flip up or fixed shelf at these dimensional tolerances. All accessible sales and service counters shall be on an accessible route complying with 4.3.	0711 0712 0713
55.	Concession Stand Counter – South Side	The counter on the south side is not open at this time.		Informational	0717 0718
56.	Recommend Counter At The North Side To Be Made Accessible Counter	Recommend using the counter area on the north side as the accessible counter.		Informational	
57.	Tables And Benches – North Section	North section of the seating has ten tables with four umbrellas.	4.32.3 Figure 45 4.32.4	Provide an accessible table with the knee clearance being a minimum of 27 inches high, a minimum of 30 inches wide, and a minimum of 19 inches deep to comply with Figure 45. The height of the accessible table shall be from 28 inches to 34 inches above the floor.	0714 0715 0716 0719 0720 0721 0722 0723 0724
58.	Tables And Benches – Lower Section By Playground Area	There is a lower section located by the playground area that has 10 tables which includes five tables with umbrellas.	4.32.3 Figure 45 4.32.4	Recommend to consider the new accessible tables at the north and south section to be the accessible tables in the area.	0725 0726

Item	Area	Issue	ADA Code Reference	Proposed Corrections	Photo
59.	Recommendation For Tables And Benches At North Section And South Section	The recommendation is a table at the north section be accessible and a table at the south section be made accessible. The height range for the existing tables is from 25 inches 26 inches above the pavement to the bottom of the table. The depth of the tables is 16 inches from center post to the outer edge.	4.32.3 Figure 45 4.32.4	Provide an accessible table with the knee clearance being a minimum of 27 inches high, a minimum of 30 inches wide, and a minimum of 19 inches deep to comply with Figure 45. The height of the accessible table shall be from 28 inches to 34 inches above the floor.	
60.	Lower Section	The lower section has a set of stairs accessing the area. Recommend adding handrails on the steps to the lower section for access.	4.9.4	Stairways shall have handrails on both sides of the stairs. The inside handrail on switchback stairs shall always be continuous. If handrails are not continuous, they shall extend at least 12 inches beyond the top riser and at least 12 inches plus the width of one tread beyond the bottom riser. At the top, the extension shall be parallel with the floor or ground surface. At the bottom, the handrail shall continue to slope for a distance of the width of one tread from the bottom riser; the remainder of the extension shall be horizontal.	0727
61.	Access To The Playground Equipment	The access then from the lower section overviews the playground area which can be accessible from the west side via the ramp at that area.	4.8.5 Figure 17	Provide handrails on both sides of the ramp to comply with Figure 17: handrails shall extend at least 18 inches beyond the top and bottom of the ramp segment and shall be parallel with the floor or ground surface. The clear space between the handrails and the wall shall be 1½ inch. The top of handrails gripping surfaces shall be mounted between 34 and 38 inches above the ramp surface. The gripping surface shall be continuous.	0728 0793 0794
62.	Mens And Womens Toilet Rooms On The East Side Of The Playground – Non Accessible	East side of the playground area there are two toilet rooms which are not accessible. They are not on an accessible path of travel. Recommend providing signage at this building indicating that the accessible toilet rooms are located by the main entry.	4.1.6(3)(e)(iii)	When an existing toilet room is not made accessible provide signage indicating the toilet room is not accessible and signage indicating the location of the nearest accessible toilet room within the facility.	0730
63.	Mens Toilet Room – Non Accessible	The door hardware is knobbed. Signage is provided in raised letters and Braille. The signage is on the hinge side of the door verses the latch side of the door. The door hardware is knobbed. There is no accessible toilet stall. There is one toilet stall, two urinals and one lavatory.	4.13.9 4.1.3(16) 4.30.4 4.30.5 4.30.6 4.30.7	Provide door hardware that does not require tight grasping, pinching or twisting of the wrist. Signs, which designate permanent rooms and spaces, shall comply with 4.30. Provide signage in raised letters, Braille and pictograms, in contrasting colors; mount the signage on the adjacent wall of the latch side of the door at a height of 60 inches to the centerline of the sign from the finished floor. Facilities and elements required to be identified as accessible by 4.1 shall use the international symbol of accessibility. The symbol shall be displayed as shown in Figure 43(a). The characters and background of signs shall be eggshell, matte, or other non-glare finish.	0743 0744 0745 0746 0747 0748 0479 0750 0751 0752 0753 0754 0755 0756 0757 0758 0759 0760 0761

Item	Area	Issue	ADA Code Reference	Proposed Corrections	Photo
64.	Womens Toilet Room	The signage is by the latch side of the door. The door hardware is knobbed. There is no accessible toilet stall. There are two toilet stalls and one lavatory and a baby changing station area.	4.1.6(3)(e)(iii) 4.13.9	When an existing toilet room is not made accessible provide signage indicating the toilet room is not accessible and signage indicating the location of the nearest accessible toilet room within the facility. Provide door hardware that does not require tight grasping, pinching or twisting of the wrist.	0731 0732 0733 0734 0735 0736 0737 0738 0739 0740 0741 0742
65.	Drinking Fountain Outside The Mens And Womens Toilet Room	There is a drinking fountain located outside the mens and womens toilet room. The spout height is at 42 inches above the pavement. The drinking fountain is by a concrete pad; however it is not along an accessible path of travel.	4.3.2(2) 4.2.4.3 4.5.1	Consider providing at least one accessible route to facilities, elements and spaces that are on the same site. At the element or space provide a clear floor or ground space area for wheelchairs in compliance with 4.5; the area shall be stable, firm, and slip-resistant and further comply with 4.5 requirements. OR consider providing water at the concession stand.	0762 0763
66.	Children's Playground Area	There is a children's playground area. The children's playground area surface is mulch on dirt. The children's playground area is not accessible.	4.3.2(2) 4.2.4.3 4.5.1	Provide at least one accessible route to facilities, elements and spaces that are on the same site. At the element or space provide a clear floor or ground space area for wheelchairs in compliance with 4.5; the area shall be stable, firm, and slip-resistant and further comply with 4.5 requirements. Provide a path of travel to a minimum one piece of each type of playground apparatus.	0729 0764 0765 0766
67.	Accessible Route To Children's Playground And Petting Zoo	The west side would be the accessible route to access this area. The access route would also access the Petting Zoo. There is no accessible path of travel to the Petting Zoo area at this time. There are two gates creating a Sally port. On the outboard gate on the east side there is 7 inches clear on the pull side of the gate of the gate.	4.3.2(2) 4.2.4.3 4.5.1	Provide at least one accessible route to facilities, elements and spaces that are on the same site. At the element or space provide a clear floor or ground space area for wheelchairs in compliance with 4.5; the area shall be stable, firm, and slip-resistant and further comply with 4.5 requirements. Provide a path of travel to a minimum one piece of each type of playground apparatus. OR consider the removal of the petting zoo.	0766 0767 0768 0769 0770 0771 0772 0773 0774
68.	Petting Zoo	The surface for the Petting Zoo area is all sand. A consideration is providing an area where someone in a wheelchair can participate in this program. Access to the coral rock post is 81 inches. The distance between the gates is 88½ inches.	4.3.2(2) 4.2.4.3 4.5.1	Provide at least one accessible route to facilities, elements and spaces that are on the same site. At the element or space provide a clear floor or ground space area for wheelchairs in compliance with 4.5; the area shall be stable, firm, and slip-resistant and further comply with 4.5 requirements. Provide a path of travel to a minimum one piece of each type of playground apparatus. OR consider the removal of the petting zoo.	0773 0778
69.	Petting Zoo Hand Sanitizer	The hand sanitizer at this location is 52 inches above the ground. A side approach is available. The interior gate is controlled by staff for access.		Informational	0775 0776
70.	Ramp Northwest Corner Of The Petting Zoo From The Upper Dining Seating Area	At the northwest corner of the Petting Zoo there is a ramp from the upper dining seating to this area. The slope of the walkway starting at very bottom is 6.8% before a person arrives the turn at the bottom. Making the turn, the slope at the very bottom is 12.6%, 12.2%, 11.2% and 12.1%. Then there is a landing. The slope at the landing is 0.4%. The slope of the second leg going up is 8.5%, 7.9%, 6.0% and at the top 6.0%.	4.8.5 Figure 17	Provide handrails on both sides of the ramp to comply with Figure 17: handrails shall extend at least 18 inches beyond the top and bottom of the ramp segment and shall be parallel with the floor or ground surface. The clear space between the handrails and the wall shall be 1½ inch. The top of handrails gripping surfaces shall be mounted between 34 and 38 inches above the ramp surface. The gripping surface shall be continuous.	0788 0789 0790 0791 0792 0793 0794 0795

Item	Area	Issue	ADA Code Reference	Proposed Corrections	Photo
71.	Swing Set At The Northwest Corner	At the northwest corner there is a swing set. There is no access to this element. Consider providing an accessible path of travel to the swing set.	4.3.2(2) 4.2.4.3 4.5.1	Provide at least one accessible route to facilities, elements and spaces that are on the same site. At the element or space provide a clear floor or ground space area for wheelchairs in compliance with 4.5; the area shall be stable, firm, and slip-resistant and further comply with 4.5 requirements. Provide a path of travel to a minimum one piece of each type of playground apparatus.	0777
72.	Dining Seating Area – North Side	This ramp takes a person to the north side seating dining area. On the north side directly south of the center landscape area the concern is a table if a wheelchair is parked by the fence area would a person be able to view the children and not have to get down to the lower area.		Informational	0796
73.	Splash And Play Area	The Splash And Play Area the gate only swings inward. There is not 18 inches clearance on the pull side of the gate from the inboard side. Recommend modifying the sidewalk to allow the 18 inches clearance on the pull side. There is a path of travel is provided to the Splash And Play area. There is a shower area along the path of travel provided to the Splash And Play area. There is a seating area. The slope of the walkway is 8.9% at the top, going down the slope is 7.4%, 4.7%. For a distance about 6 feet there is a slope condition. Recommend not providing handrails at this area.	4.13.6 Figure 25	Modify the clear floor space area at the door to provide a minimum of 18 inches clearance on the pull side of the gate for a forward approach.	0799 0800 0801 0802 0803 0804 0993 0994 0994 0995 0996 0997 0998 0999 1000
74.	Counter For The Splash And Play Area And Fish Food	There is a counter located at the Splash And Play area and is staffed. The counter height is 36½ inches above the pavement.		Informational	0805 0806 0807 0808
75.	Three Tables By The Counter For The Splash And Play Area	At this area there are three tables that are provided in the landscape area. Recommend providing an accessible table at this area.	4.32.3 Figure 45 4.32.4	Provide an accessible table with the knee clearance being a minimum of 27 inches high, a minimum of 30 inches wide, and a minimum of 19 inches deep to comply with Figure 45. The height of the accessible table shall be from 28 inches to 34 inches above the floor.	0809 0810
76.	Three Tables Going Easterly From "Banyan Bowl, Restrooms and Exit Signage	Continuing easterly then walking to another section; this is looking at the path of travel at the intersection that says "Banyan Bowl, Restrooms and Exit. We are going south on that path of travel. Going south on this path of travel, if a person goes to the easterly path of travel there are three tables for seating. Recommend providing an accessible table.	4.32.3 Figure 45 4.32.4	Provide an accessible table with the knee clearance being a minimum of 27 inches high, a minimum of 30 inches wide, and a minimum of 19 inches deep to comply with Figure 45. The height of the accessible table shall be from 28 inches to 34 inches above the floor.	0811 0812 0813 0814
77.	Trees – Protruding Objects	Through this area there are a couple of trees that would by definition be considered as a protruding object.		Informational – no action to be taken.	0815 0816 0817 0818 0821 0822

Item	Area	Issue	ADA Code Reference	Proposed Corrections	Photo
78.	Geodesic Dome Entrance – North Side	From the path of travel in this area would take a person to Geodesic Dome Entrance which is located on the west side.		Informational	0819
79.	Imagination Station And Hammock Pavilion Area	Following the path of travel that would be located on the south side of the Splash and Play Area and accessing the path of travel to the Banyan Bowl Hammock Pavilion. There are two tables heading from north to south the path takes a person to the west entry to the Geodesic Dome A person turns left to go to the Hammock Pavilion.	4.32.3 Figure 45 4.32.4	IMAGINATION STATION AND HAMMOCK PAVILION AREA HAS BEEN REMOVED AND/OR IS CLOSED TO THE PUBLIC. Consider providing an accessible table with the knee clearance being a minimum of 27 inches high, a minimum of 30 inches wide, and a minimum of 19 inches deep to comply with Figure 45. The height of the accessible table shall be from 28 inches to 34 inches above the floor.	0823 0824 0825 0826 0827
80.	Bench Seating Areas At The Hammock Pavilion Area	There are bench seating areas at the Hammock Pavilion areas. The seating for accessibility would be located behind the bench areas. Do not know if this space is operational or not. It does not appear to be usable at this time.		Informational - IMAGINATION STATION AND HAMMOCK PAVILION AREA HAS BEEN REMOVED AND/OR IS CLOSED TO THE PUBLIC.	0828 0829 0830 0831 0832 0833 0834 0835
81.	North Side Of The Hammock Pavilion – Blocked Off	North side of the Hammock Pavilion there is a path of travel that is being blocked off to an unused area. If this area does become used recommend cleaning up the path of travel.		IMAGINATION STATION AND HAMMOCK PAVILION AREA HAS BEEN REMOVED AND/OR IS CLOSED TO THE PUBLIC.	0836 0837
82.	Slope East Side Of The Children's Water Park Area	Back at the intersection of Imagination Station by the Splash And Slide area going easterly along the path of travel. At the east side of the children's water park area there is a slope of 14.5%. Consider providing handrails at this condition just at this sloped area.	4.8.5 Figure 17	Provide handrails on both sides of the ramp to comply with Figure 17: handrails shall extend at least 18 inches beyond the top and bottom of the ramp segment and shall be parallel with the floor or ground surface. The clear space between the handrails and the wall shall be 1½ inch. The top of handrails gripping surfaces shall be mounted between 34 and 38 inches above the ramp surface. The gripping surface shall be continuous.	0840 0841 0842
83.	Slope At The Signage For The Hammock Pavilion	Following the path of travel down there is another slope condition at the signage that takes a person to the Hammock Pavilion; the slope is 11.1%. The distance run of the slope is approximately 7 feet.	4.8.5 Figure 17	Provide handrails on both sides of the ramp to comply with Figure 17: handrails shall extend at least 18 inches beyond the top and bottom of the ramp segment and shall be parallel with the floor or ground surface. The clear space between the handrails and the wall shall be 1½ inch. The top of handrails gripping surfaces shall be mounted between 34 and 38 inches above the ramp surface. The gripping surface shall be continuous.	0843 0844 0845 0846
84.	Slope Condition At Signage – "Splash And Play, Banyan Bowl And West Of Lakeview Terrace South Of Hammock Pavilion And East Imagination Station	There is a slope condition at the signage that says "Splash And Play, Banyan Bowl and Lakeview Terrace to the west, Hammock Pavilion to the south, Imagination Station to the east.		Informational	0848
85.	Bridge Area – North Of Off Shut	Continue easterly along that path of travel there is an off shoot that goes to the north that takes a person over a bridge. A possible consideration is providing handrails on this bridge element if needed to provide access to this area.	4.8.5 Figure 17	Provide handrails on both sides of the ramp to comply with Figure 17: handrails shall extend at least 18 inches beyond the top and bottom of the ramp segment and shall be parallel with the floor or ground surface. The clear space between the handrails and the wall shall be 1½ inch. The top of handrails gripping surfaces shall be mounted between 34 and 38 inches above the ramp surface. The gripping surface shall be continuous.	0849 0850 0851

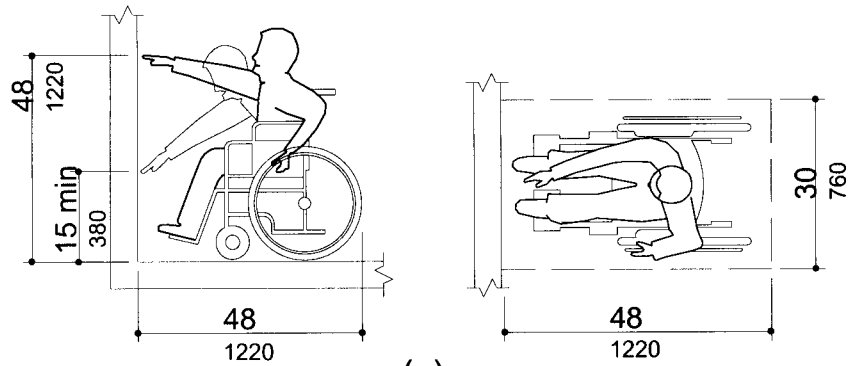
Item	Area	Issue	ADA Code Reference	Proposed Corrections	Photo
86.	Vertical Offset Along Path Of Travel	Along this path of travel, recommend to patch the crack area.	4.3.8	Changes in levels along an accessible route shall comply with 4.5.2. If an accessible route has changes in level greater than ½ inch, than a curb ramp, ramp, elevator, or platform lift shall be provided.	0852
87.	The Slope At The Bridge Area Over The Water Way	At the bridge by the creek has a slope of 16.1% on the south side. On the north side the slope is 25.6%. It is possible that this is not the required path of travel because this is an off shoot of that walkway.		Informational – Consider an alternate path of travel for access to the other features/elements of the gardens.	0853 0854 0855
88.	2 nd Bridge	Continue along this path there is another bridge. This is not the accessible path of travel. Recommend not providing handrails at this bridge.		Informational	0856 0857 0858 0859
89.	Pond Area For Turtles And Fish	Continue easterly a person comes to a pond area where the turtles and fish are located.		Informational	0860 0861 0862 0863 0864 0865
90.	Bridge From Shelter Area For East Side To Pond Area	Following the path of travel around the east side the path of travel turns and head south to a shelter area. The path of travel works for accessibility. The issue is there is one bridge a person has to go over to this element. However this path could be the accessible path of travel that would be on the far east side to provide access to the pond area.		Informational	0866 0867 0868
91.	Raised Area Due To Tree Roots By Pond Area	Continuing southward along the path of travel, there is a small raised area on the right side due to the roots. The left side would be considered to be accessible. This is by a pond area. The cross slope up at this area is 4.4% and 6.2% at the high end on the west side. There is a small area at this slope.		Informational – Consider the installation of handrails for assistance at this area.	0869 0870 0871 0872 0873 0874 0875 0876
92.	Cage Area Going South	Continuing south there are some cage areas. The path of travel would work at this condition. The path of travel then continues south then swings westerly and then swings back southerly through the forest by some additional cage areas.		Informational	0877 0878 0879 0880
93.	Imagination Station	Continue along the path of travel which takes a person along the path of travel by the water area and continuing around to Imagination Station.		IMAGINATION STATION AND HAMMOCK PAVILION AREA HAS BEEN REMOVED AND/OR IS CLOSED TO THE PUBLIC.	0881 0882 0883

Item	Area	Issue	ADA Code Reference	Proposed Corrections	Photo
94.	Bleachers At Imagination Station	Imagination Station has three bleacher areas. There is no accessible seating area. There are access points at the northwest corner and south side. If these are to be used, consider where the concrete area is located would be the accessible pad for the accessible seating area. The only area that is here is the one located on the north side. By the north bleachers and the one directly to the west of it you could notch out areas for accessible seating to be provided and modify the existing structure.	4.33.1 4.33.2 4.33.3 4.33.4	IMAGINATION STATION AND HAMMOCK PAVILION AREA HAS BEEN REMOVED AND/OR IS CLOSED TO THE PUBLIC. Provide accessible seating to comply with 4.1. Provide the minimum clear floor spaces per Figure 46, minimum of 33 inches per wheelchair. Wheelchair areas shall be an integral part of any fixed seating plan and shall be provide so as to provide people with physical disabilities a choice of admission prices and lines of sight comparable to those for members of the general public. At least one companion fixed seat shall be provided next to each wheelchair seating area. When the seating capacity exceeds 300, wheelchair spaces shall be provided in more than one location. Readily removable seats may be installed in wheelchair spaces when the spaces are not required to accommodate wheelchair users. The ground or floor at wheelchair locations shall be level and shall comply with 4.5.	0884 0885 0886 0887 0888
95.	Ramp On The North Side Bleacher Area	On the north side bleacher area there is a ramp condition coming up to the bleacher area. The length of the ramp is less than 6 feet in length. The length is approximately 4 foot 8 inches in length. The slope at this condition is 12.8%.		Consider providing signage noting individuals where the accessible seating is located.	0889 0890
96.	Ramp At Imagination Station And The Intersection That Says "Sink Hole The Original Entrance, Splash And Play, Banyan Bowl, Restroom, Exit, Turtle Island and Cypress Slough"	At Imagination Station and the intersection that says "Sink Hole The Original Entrance, Splash And Play, Banyan Bowl, Restroom, Exit, Turtle Island and Cypress Slough" there is a ramped up area on either side of this intersection along the path of travel. On the north side the slope is 9%. There is a bridge along this walkway area.	4.8.5 Figure 17	Provide handrails on both sides of the ramp to comply with Figure 17: handrails shall extend at least 18 inches beyond the top and bottom of the ramp segment and shall be parallel with the floor or ground surface. The clear space between the handrails and the wall shall be 1½ inch. The top of handrails gripping surfaces shall be mounted between 34 and 38 inches above the ramp surface. The gripping surface shall be continuous.	0891 0892 0893 0894 0895
97.	Path Of Travel Going to A Back Side Area Of The Fish Pond	If a person follows this path of travel to the signage that says "Splash And Play, Banyan Bowl" this could take a person to the back side area of the fish pond.		Informational	0896 0897 0898 0899 0900 0901 0902 0903 0904 0905 0906 0907 0908 0909

Item	Area	Issue	ADA Code Reference	Proposed Corrections	Photo
98.	Ramp At Building 2008 Entrance	There is a ramp that has been constructed to provide access to the building with handrail extensions. The slope of the ramp starting at the top is a slope 8.2%, going down the slope is 9%, 9.3% and at the bottom the slope is 7.8%.		Informational	0910 0911 0912 0913 0914 0915 0916 0917 0918 0919 0920 0921 0922 0923 0924 0925 0926 0927 0928
99.	Historical Entrance Building 2008	This is a meeting room that has been renovated. The thermostat control is mounted at a height of 56½ inches above the floor to the top.	4.27.3 Figure 5 or 6	EXCEPTION: These requirements do not apply where the use of special equipment dictates otherwise or where electrical and communications systems receptacles are not normally intended for use by building occupants	0929 0930 0931 0932 0933 0934 0935 0940 0941 0942 0943 0944
100.	Heating Unit	There is a heating unit located in the back room. The controls for are at 72 inches above the floor.	4.27.3 Figure 5 or 6	EXCEPTION: These requirements do not apply where the use of special equipment dictates otherwise or where electrical and communications systems receptacles are not normally intended for use by building occupants	0936 0937 0938 0939
101.	Ramp To The Entrance Building Going To The Restrooms And The Sink Hole	Walk south to the entrance building the path of travel going to the Restrooms and the Sink Hole there is a ramped up area to the Hammock Building. There is a signage that says "Sink Hole And Restroom, Exit". As a person proceeds down this path of travel there is a slope accessing it. There is a cross slope issue here but there is an alternate path of travel by the Hammock area. The cross slope is 8.8% (that is at the low point). This takes a person to the backside of the Hammock area.	4.8.5 Figure 17	Provide handrails on both sides of the ramp to comply with Figure 17: handrails shall extend at least 18 inches beyond the top and bottom of the ramp segment and shall be parallel with the floor or ground surface. The clear space between the handrails and the wall shall be 1½ inch. The top of handrails gripping surfaces shall be mounted between 34 and 38 inches above the ramp surface. The gripping surface shall be continuous. OR consider the modification of the walkway to minimize its slope.	0945 0946 0947 0948 0949 0950 0951 0952 0953 0954 0955 0956 0957

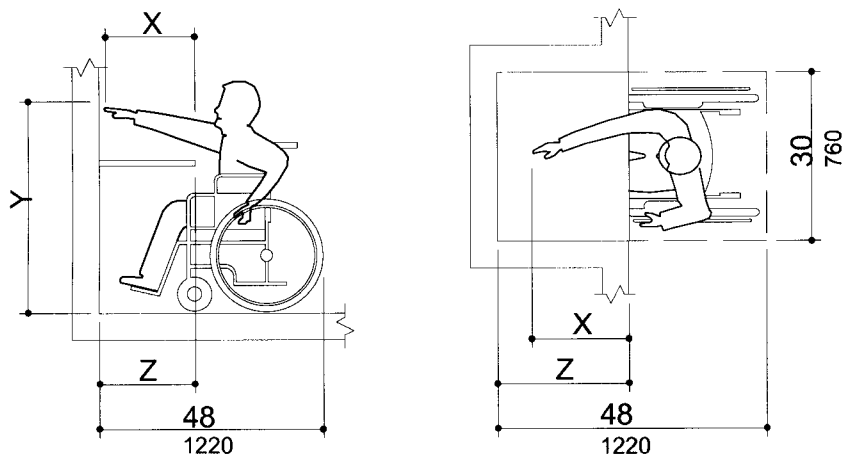
Item	Area	Issue	ADA Code Reference	Proposed Corrections	Photo
102.	Steep Bridge Area	Going back to the intersection of the path which takes a person to the "Restrooms and Sink Hole" area. Continuing along this path of travel a person comes to a bridge area. The slope at the bridge is 18.5% on one side; the slope on the other side is 11.0%.		Informational – Consider an alternate path of travel for access to the other features/elements of the gardens.	0959 0960 0961 0962 0963 0964 0965
103.	Accessible Path Of Travel To Pavilion	Following that path of travel there is another area with signage that says, "Imagination Station, Fish Feeding, Restroom and Exit"; following the path of travel towards the exit. Following this path of travel a person comes to a pavilion area. There is a sloped area to where the "Tree Of Life" is located. The sloped area is not greater than 6 inches in rise. Therefore handrails would not be required on the sloped area. The slope at this condition is a slope of 8.3%. Following that path of travel there is another area with signage that says, "Imagination Station, Fish Feeding, Restroom and Exit"; following the path of travel towards the exit.		Informational	0966 0967 0968 0969 0970 0971 0972
104.	Slope At The Original Entrance	Heading to The Sink Hole from the original entrance the slope of the path of travel is 8.1%, going down, the slope is 7.1%, 8.3% and 2%. There is a sloped condition of approximately 30 feet in length. Recommend adding handrails at this sloped area.	4.8.5 Figure 17	Provide handrails on both sides of the ramp to comply with Figure 17: handrails shall extend at least 18 inches beyond the top and bottom of the ramp segment and shall be parallel with the floor or ground surface. The clear space between the handrails and the wall shall be 1½ inch. The top of handrails gripping surfaces shall be mounted between 34 and 38 inches above the ramp surface. The gripping surface shall be continuous. OR consider the modification of the walkway to minimize its slope.	0976 0977 0978 0979 0980 0981 0982 0983 0984
105.	Fan Along The Path Of Travel North Of The Hibiscus Room	There is a fan along the path of travel north of the Hibiscus Room along the walkway at a height of 67 inches above the floor to the bottom. The unit protrudes out more than 12 inches from the column. Recommend providing a barrier underneath it to prevent a person who is vision impaired from walking into it.	4.4.2 Figure 8(b)	Raise the fan to a minimum of 80 inches from the floor or provide a protective barrier at the object to prevent a visual impaired person from walking into it and hitting their head.	0990 0991

Fig 5
Forward Reach



(a)

High Forward Reach Limit



NOTE: X SHALL BE \leq 25 IN. (635 MM.); Z SHALL BE \geq X.
WHEN X < 20 IN. (510 MM.), THEN Y SHALL BE 48 IN.
(1220 MM.) MAXIMUM. WHEN X IS 20 TO 25 IN. (510 TO
635 MM.), THEN Y SHALL BE 44 IN. (1120 MM.) MAXIMUM.

(b)

Maximum Forward Reach Over an Obstruction

Fig 5
Forward Reach

Fig 6
Side Reach

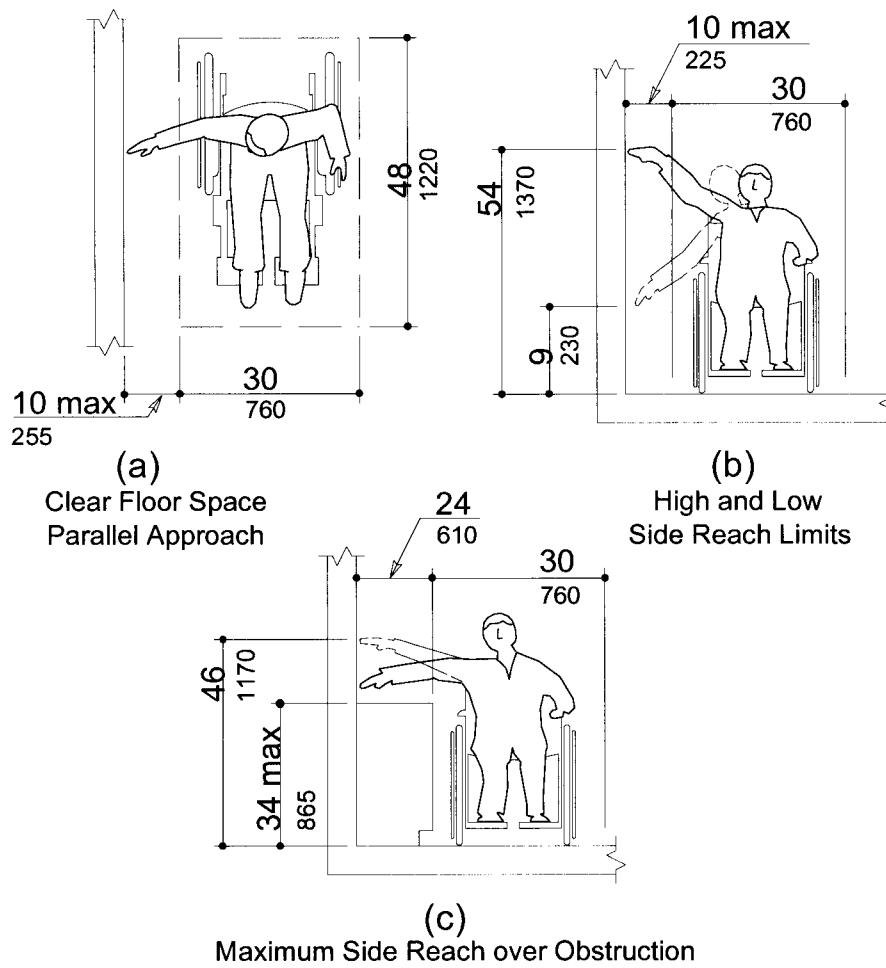


Fig 6
Side Reach

Fig 8

Protruding Objects (8a to 8d) **See Also: 8e to h**

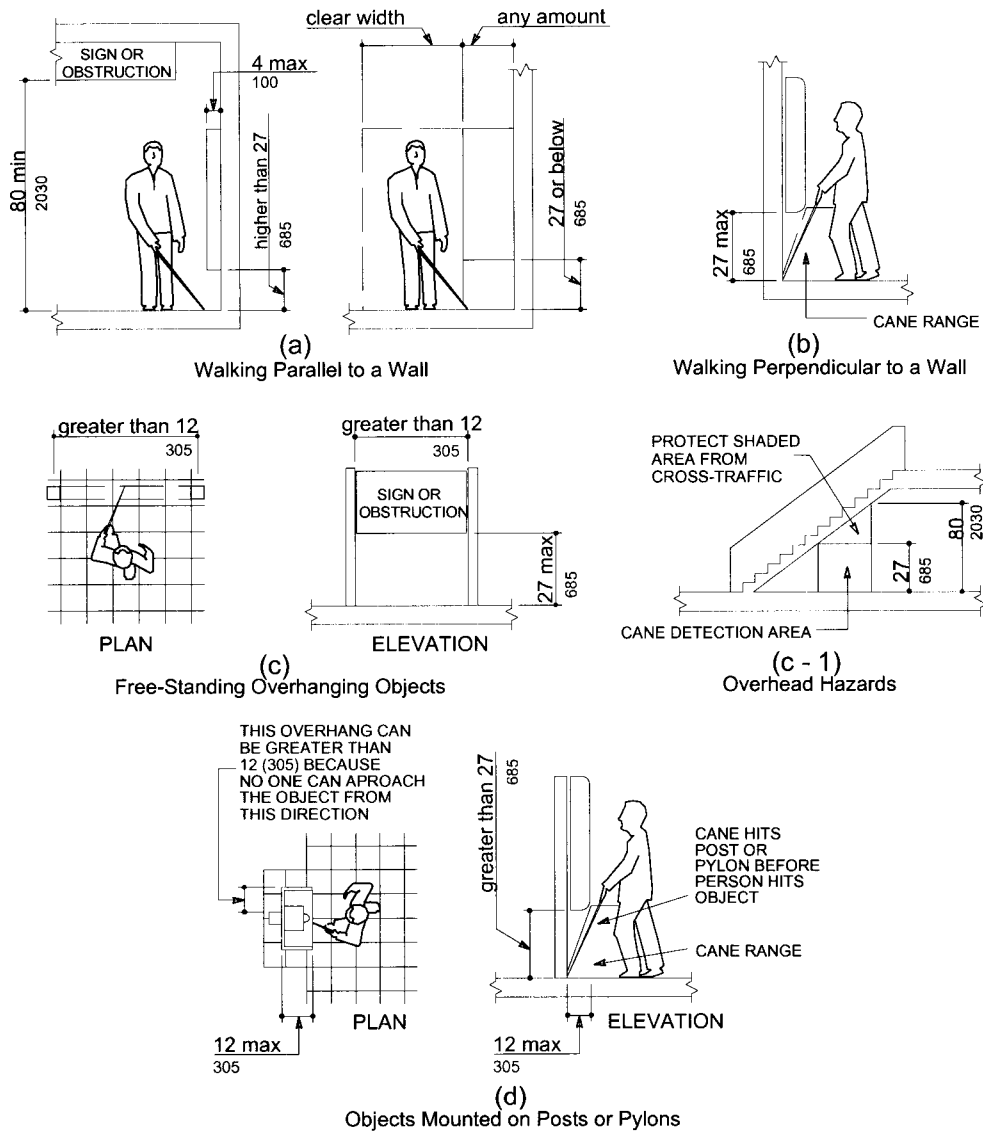


Fig 8
Protruding Objects

Fig 17
Examples of Edge Protection and Handrail Extensions

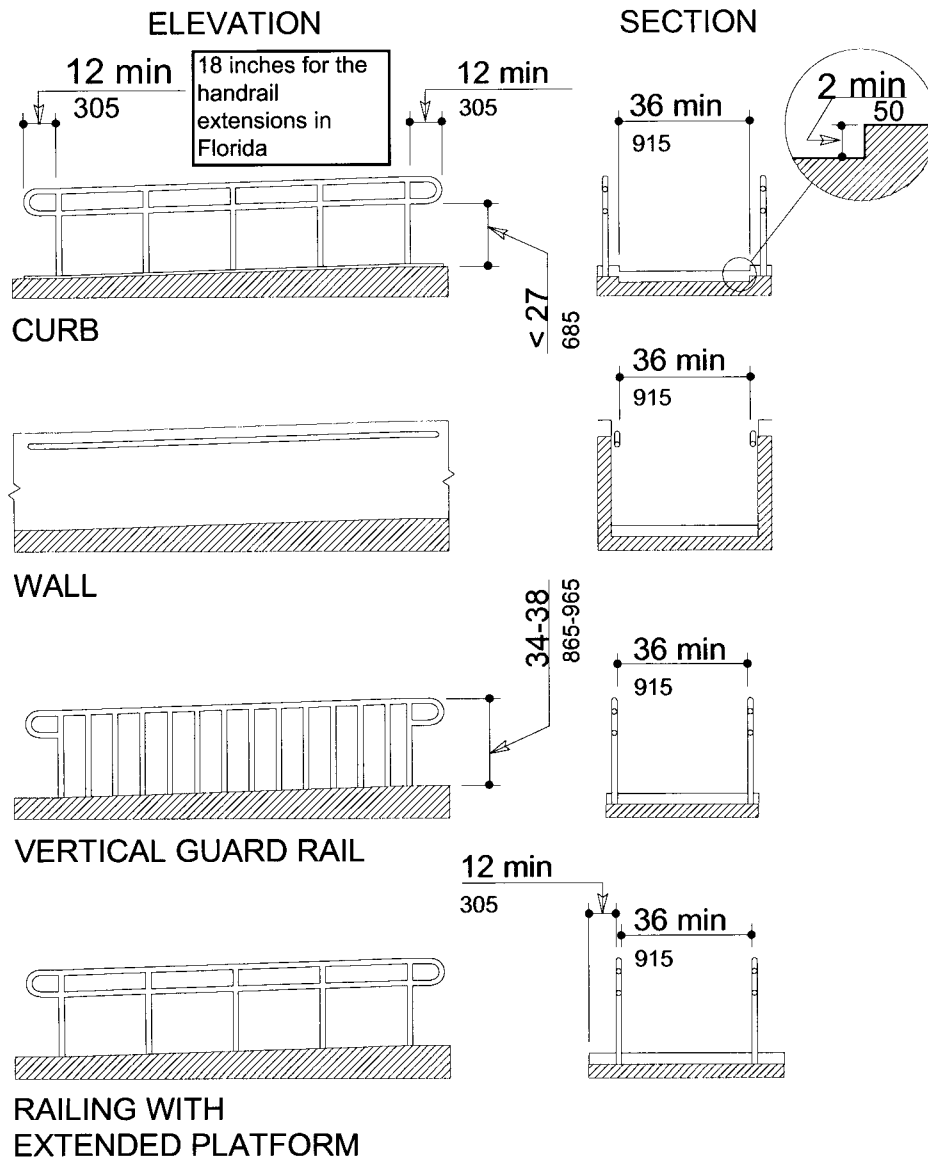


Fig 17
Examples of Edge Protection and Handrail Extensions

Fig 24
Clear Doorway Width and Depth

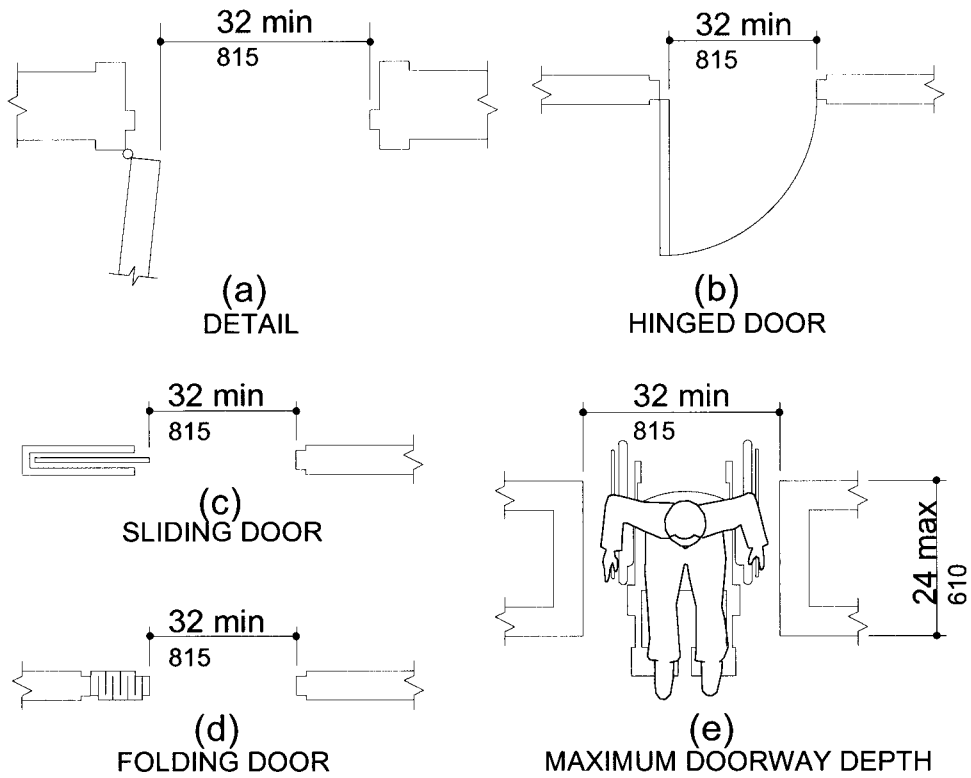
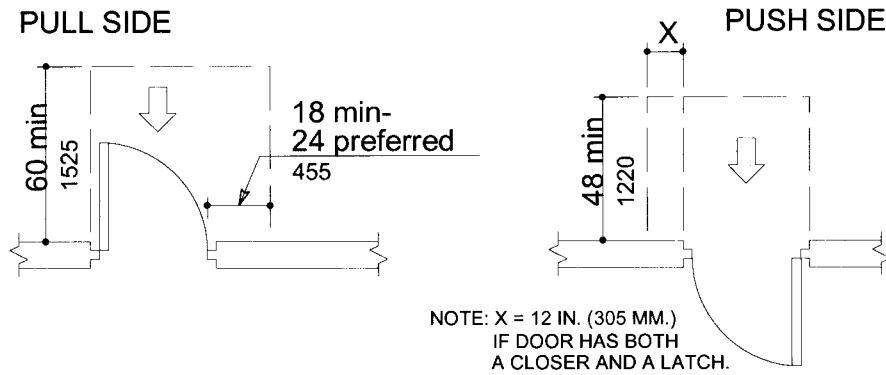


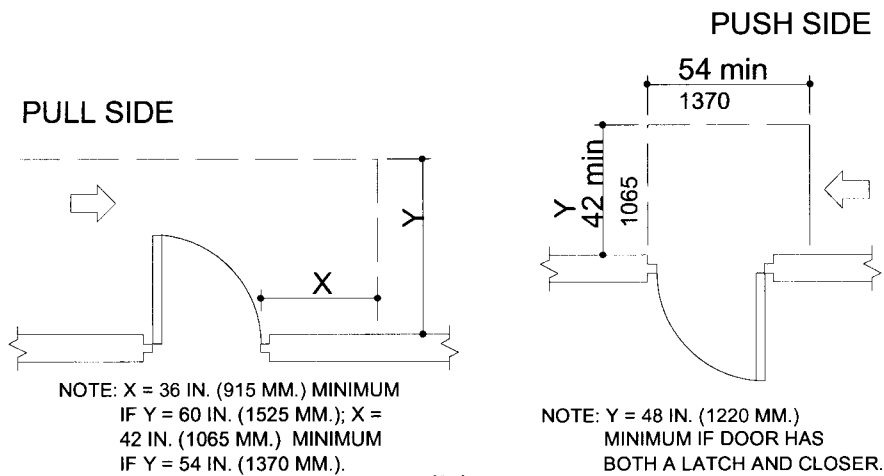
Fig 24
Clear Doorway Width and Depth

Fig 25

Maneuvering Clearances at Doors (25a to 25b) **See Also: 25c to f**



(a)
Front Approaches - Swinging Doors



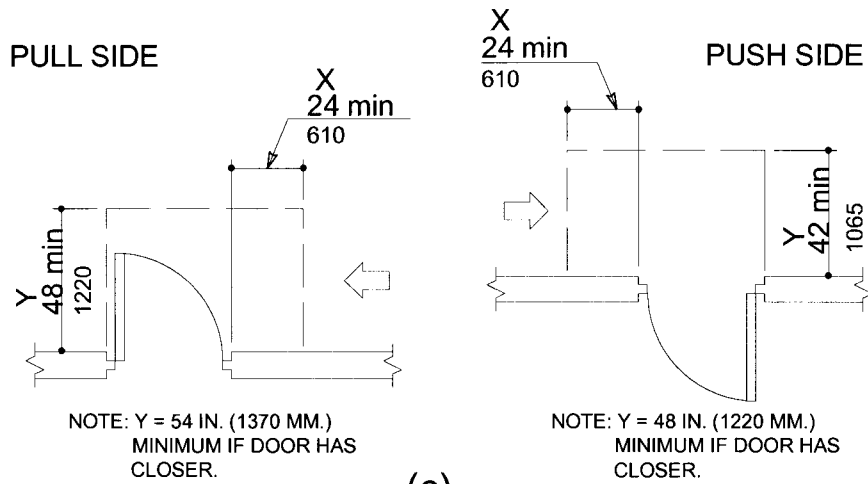
(b)
Hinge Side Approaches - Swinging Doors

NOTE: ALL DOORS IN ALCOVES SHALL COMPLY WITH
THE CLEARANCES FOR FRONT APPROACHES.

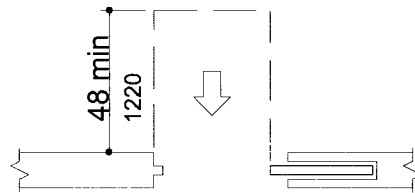
Fig 25
Maneuvering Clearance at Doors

Fig 25

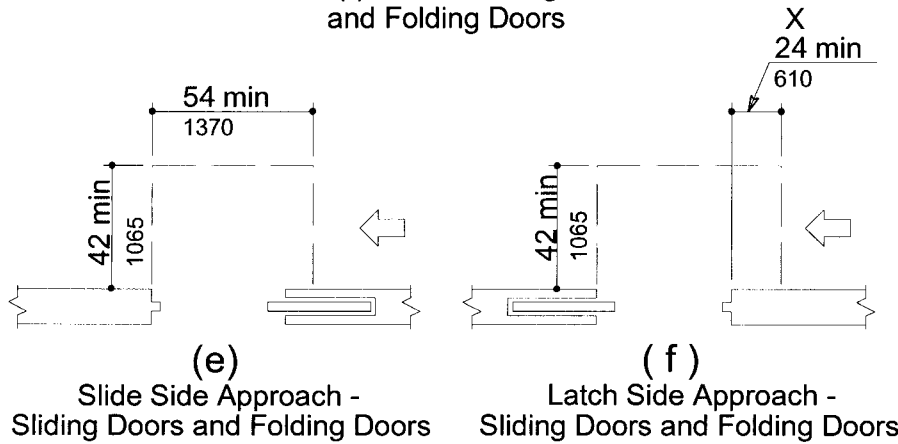
Maneuvering Clearances at Doors (25c to 25f) **See Also: 25a to b**



(c)
Latch Side Approaches - Swinging Doors



(d)
Front Approach - Sliding Doors
and Folding Doors



NOTE: ALL DOORS IN ALCOVES SHALL COMPLY WITH
THE CLEARANCES FOR FRONT APPROACHES.

Fig 25
Maneuvering Clearance at Doors

Fig 30
Toilet Stalls

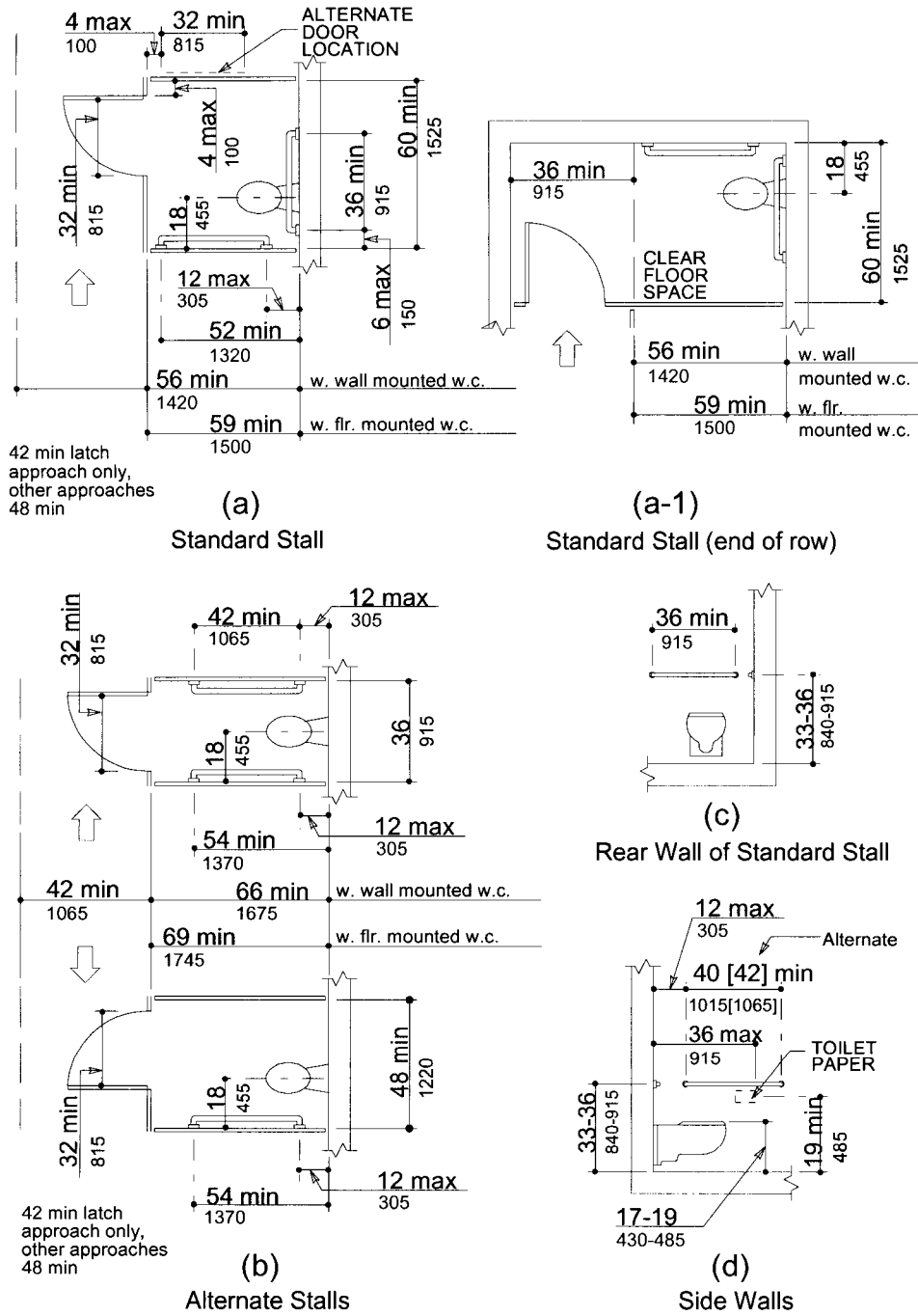


Fig 30
Toilet Stalls

Fig 45
Minimum Clearances for Seating and Tables

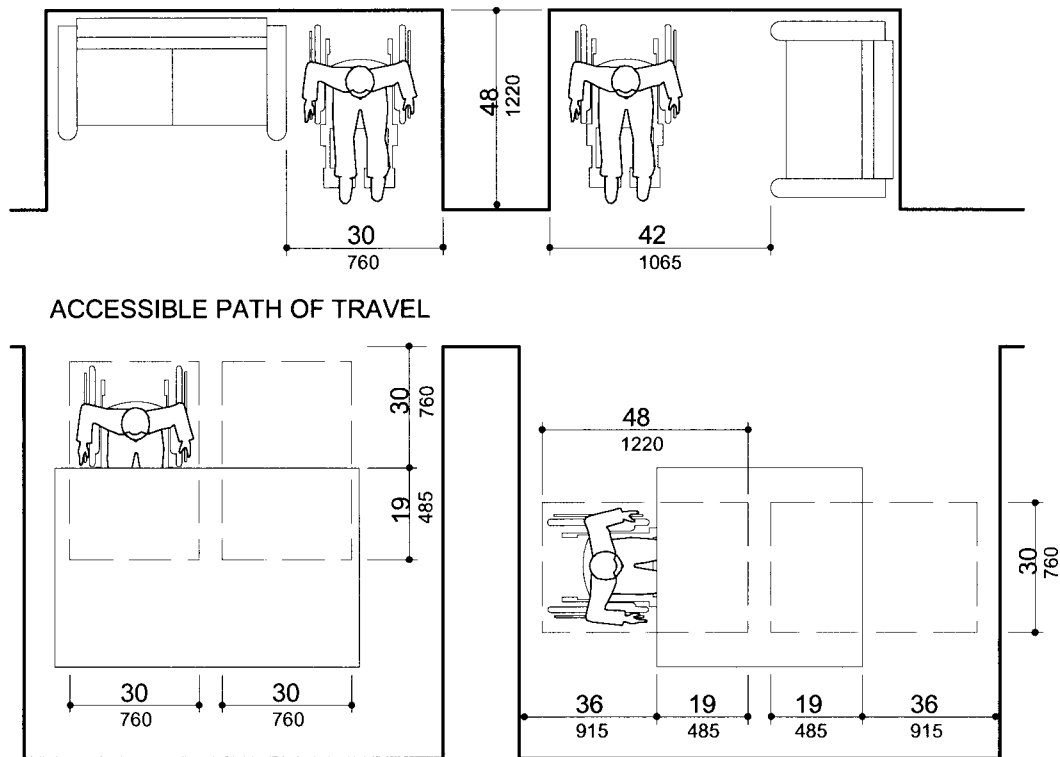


Fig 45
Minimum Clearances for Seating and Tables

APPENDIX B: SIDEWALK ACCESSIBILITY TRANSITION PLAN TABLE

Location: Avenue	Location: Street	Cracked (severity)	Lifted (inches)	Broken (severity)	Danger (severity)	Notes
5950	104	5				
5930	104	1				
5900	104	2				
5896	104		1			
5890	104		3		2	
5870	104	1	4	1	3	
5850	104	1	3	1	2	
5830	104	1	4	2	1	
5800	104	1				
57	10400	8		2		
62	10401		2	2		
6200	104			1		
6270	104	1		3		
6280	104		1	1		
7001	104	2				
69	10325					
6855	104					
6841	104			1		
6821	104					
6783	104			2		
6767	104					
67	10380	1		1		
72	10405			2		
71	10410	2				
71	10405	6		2		
70	10400	1		1		
70	10320		1	2		
71	10335	4	3	2		
71	10330	2	3	3		
72	10333	8	2	4		
72	10211			1	1	
72	10201			4		
72	10125	1		1		
7190	101		1	1		
7195	101	3		5	1	
7190	100			1		
7153	100		1	3		
7190	99	1	1	2		
7191	99	2		1	2	
7190	98	1		1	1	
77	10640	1	3	3		
77	10642			1		
77	10650					
77	10652					
77	10670					

Location: Avenue	Location: Street	Cracked (severity)	Lifted (inches)	Broken (severity)	Danger (severity)	Notes
77	10672					
77	10710			3		
77	10712	1		2	1	
77	10720			1		
77	10722					
77	10805					
77	10825	1		2		
7700	109					
7701	110					
77	11024			1		
77	11028					
77	11032			1	3	
77	11036					
79	11101					
79	11053	2				
79	11051	1				
79	11043					
79	11041					
79	11013			1		
79	11011		2	1		
79	11003					
79	11001		5	1		
78 CT	11000		4	3	1	
78 CT	11030	2	1	2		
78 CT	11040	1				
78 CT	11050		1	1		
78 CT	11100	1				
78 CT	11120	1	3	8		
78 CT	11121		2	3	2	
78 CT	11195		1	2	2	
74	11125	1	1	2	3	
74	11201	1	2	1		
Canal	S of 112			1		
73 CT	11200	2	1	3		
7350	112			1	1	
7330	112	2		1		
7300	112		2			
7290	112					
7270	112		1	1	1	
72 CT	11201	2	3		1	
72	11202	2	1	4	2	
72	11151			3	1	
72	11101	2				
7150	110 TER	3		2		
7155	110 TER	1	1	1		

Location: Avenue	Location: Street	Cracked (severity)	Lifted (inches)	Broken (severity)	Danger (severity)	Notes
E of 72	Canal	3		3		
7130	109 TER		1			
7135	109 TER	4		6		
71	11205		1			
71	11200		3	5	1	
72	11205	3	1	1		
72	11151	1	2	2	1	
71	11140	3	2	2	1	
71	11141		1	6	1	
7001	112				1	Water box
70	11195	1	2	6	1	
68	12015	1	4	2	3	
6701	120	1	2	5	6	
67	12000	2	2	7	6	
71 CT	10025			1		Canal
70 CT	10020			1		Canal
73	12001		7	1		
7270	120	1	8	4	2	
7175	120		6	2		
7170	119		1			
7175	119					
7170	118					
7175	118			2		
7170	117 TER		2			
7175	117 TER		2	2		
7170	116 TER					
7175	116 TER		2		2	
7180	115 TER			1	1	
7175	115 TER					
7180	114 TER		2			
7175	114 TER	1		2	1	
7180	114		1	1		
7177	114	1	1	2		
72	11325		1	4	2	
73	11950	2	2	3		
7375	120	1	5	4		
7400	112		3			
74	11220		1			
74	11240	2	3	2		
74	11300		2	1		P-1
74	11320		2			
7400	114		2			
7405	115			1		
7400	115	1			1	
7425	116	1		3	1	

Location: Avenue	Location: Street	Cracked (severity)	Lifted (inches)	Broken (severity)	Danger (severity)	Notes
7400	116		3	1		
7401	117	1	1			
7400	117		1	6		
7401	118	2	1	2		
81 RD	11790			1	2	
81 RD	11792					
81 RD	11800					
81 RD	11802			1		
81 RD	11810		1			
81 RD	11812					
81 RD	11820		1			
81 RD	11822		2			
81 RD	11840				1	
81 RD	11842		1			
81 RD	11850				1	
81 RD	11852					
81 RD	11860		1			
81 RD	11862		2			
81 RD	11940			1		
81 RD	11942					
81 RD	11847					
81 RD	11845					
81 RD	11745		2			week 27
81 RD	11727					week 27
81 RD	11725					week 27
81 RD	11715				1	week 27
81 RD	11713			1		week 27
81 RD	11705	1	3	3		week 27
81 RD	11557				1	week 27
81 RD	11555		2	2	1	week 27
81 RD	11537		2	1		week 27
81 RD	11535		1			week 27
81 RD	11527		1			week 27
81 RD	11525		1			week 27
81 RD	11515			1		week 27
81 RD	11511		1			week 27
81 RD	11503		1			week 27
81 RD	11501					week 27
81 RD	11427					week 27
81 RD	11425		1			week 27
82	12355	1				
	12351					
	12303		1	1		
	12301		3			
	12253		1		2	

Location: Avenue	Location: Street	Cracked (severity)	Lifted (inches)	Broken (severity)	Danger (severity)	Notes
	12251		1	1	2	
	12203	1	2	2	2	
	12201	1		5	5	
	12193	1	4	1	3	
	12191	3	1		1	
	12103		1	2	2	
	12101		2	1	1	
	12033			3	1	
8130	120			1		Week 29
77	12640		5	1	1	
77	12650		1			
77	12705	1	2			
77	12735			1		
7695	128	3	1	4		
7690	127		2			
7641		1	1			
7640	125	2	3	2	2	
7641	125				3	
7660	124	1	3			
83 CT	12801	2	1	1		
82 PL	12800	2	2			
82 PL	12801		2			
82 CT	12800					
82 CT	12801			1		
82	12800					
82	12801		3	2		
81	12800	1			1	
82	12400	1	2		2	
82	12450	1		3		
82	12500	1				
82	12580	1		2		
82	12590		1	1		
82	12630	1	4	1		
82	12650		2			
82	12670					
82	12700	1	2	1		
82	12720	1	2	6	2	
83 CT	12801	2	1	1		
82 PL	12800	2	2			
82 PL	12801		2			
82 CT	12800					
82 CT	12801			1		
82	12800					
82	12801		3	2		
81	12800	1			1	

Location: Avenue	Location: Street	Cracked (severity)	Lifted (inches)	Broken (severity)	Danger (severity)	Notes
82	12400	1	2		2	
82	12450	1		3		
82	12500	1				
82	12580	1		2		
82	12590		1	1		
82	12630	1	4	1		
82	12650		2			
82	12670					
82	12700	1	2	1		
82	12720	1	2	6	2	
7390	132		2	3	1	
74	13155			2	1	
7390	131		2	3	3	
7385	131			2		
7380	130	1	2	1		
7391	130	1	4	2	3	
7390	129	1	2	1	1	
74	12885		2	3		1-DW
7396	128		2	1	1	
72	13241	1	1	2	2	DW
72	13221			5		2 DW
72	13201		2	1		
72	13191					
72	13151		1	2		
72	13101		1	1	1	DW
72	13051		6		1	
7150	130		4	3		
72	12941		3	2	1	
72	12921	1	2	1	1	
72	12901		2	3	2	
72	12851	2	1	2	6	
7150	128	1	4			
7361	128	1		3	2	PMS
7391	128			5		PMS
7397	128	1		4	2	PMS
7405	128	2	2			
7425	128		3			
7445	128	1	4			
7465	128	2	3		1	
7485	128		3	1	3	1-V
7501	128		2		4	3-V
7545	128		2	4	1	
7685	128	1	1	4	1	
7695	128	2	1	7		
72	12500		3	5		

Location: Avenue	Location: Street	Cracked (severity)	Lifted (inches)	Broken (severity)	Danger (severity)	Notes
7201	126	1	3	4		
72	12600		5	6		
72	12700	1	1	9		
72	12710	1	1	9		
7203	128		2	1		
72	12781		4	1	1	
72	12741	1	2	1		
72	12701	1		2	2	
72	12651	1	1	3		
72	12601		1			
7320	124	1	1	2		
7340		1	3	3		
7360			4	1	1	
7380		1	2		1	
7281				2	1	
7256	125	1	4	1		
7251	125	2	4	1		
7256	126	1	1	2		
7251	126	3			3	1-PH
7252	127	2	4	4		
7251	127	2	3	1		
7292	128	4	2	4	1	
7406	128	3	1		1	PH
7401	127	1	1	5		
7406	127	2	1	3		
7401	126	2	3	1		
7406	126	1	3	1		
74	12501	2	1	4	1	
7401	124	2	6	1		PH
67	8703	4		3		
6753	88	3	1	1		
6751	88	3	1			
6801	88	1	3	2		
6805	88	6		1		
68 CT	8617	5		1		
68 CT	8601	3		2		
68 CT	8603					
68 CT	8610	5	1	1		
68 CT	8617	8	1			
68 CT	8765	3				
6353	88	1	1			
6363	88	3				
6373	88	1				
64	8760	6	1			
64	8750	5				

Location: Avenue	Location: Street	Cracked (severity)	Lifted (inches)	Broken (severity)	Danger (severity)	Notes
64	8740	2				
6381	88	2				
64	8610	8	3	2		
64	8660	3	1	1		
64	8700	2				
64 CT	8791	1				
64 CT	8790	3				
6491	88					
6575	88		1			
6605	88	3				Asphalt 1
6645	88	1				
6675	88	2	1	1		
6691	88	9		3		
6886	89 TER		4			
6880		1	2			
6858		5	4	1		
6853	88/68 CT		2			
68 CT	8800	3	1			
68 CT/88	8810					
6904	88	1				
6882	88					
6886	88					
6910	88	2				
6950	88/69 CT	1				
69 CT	8821	2		1		
69 CT	8861	3				
6900	88/69 CT	3	1			
68 CT	8801	1	1			
68 CT	8810					
6715	88					
69 CT	8950	8	4	1		
6240	88	5	2	4		
6250	88	3				
6280	88	4	1			
63 CT	8801		2			
63 CT	8800	4		4		
64 CT	8801	6		4		
64 CT	8800	1				
6450	88	3	1	1		
6600	88					
6610	88			3		
6701	88					
6700	88	1				
67	8910					
67	8900			1		

Location: Avenue	Location: Street	Cracked (severity)	Lifted (inches)	Broken (severity)	Danger (severity)	Notes
67	8960					
67	9020			2		
67	9060					
61	8785		2	1		
	8775					
	8765	1	2			
	8762	1				
	8772	1	3			
	8782	4	3			
	8783	3		1		
	8793	1	2	1		
	8798	4	2			
	8788	4				
6150	88	5		5		
6140	88	4				
6100	88			1		
6080	88	1		1		
9052	88	1	1	4		
60	8800	1	1	12		
5950	88	19	1	32		
5900	88	6	1	5		
5800	88	1		1		
5792	88	4	1	3		
5750	88	1		1		
5700	88	1	1	1		
57	8800			1		
57	9600					
57	9630	1				
57	9650			1		
5700	97	2				
57	9750	2	1			
57	9800	1		4		
57	9911		1	1		
57	9950	1				
57	10002	1	2	1		
57	10007	6	1	10		
57	10061	2		3		
57	10101	4	2			
57	10121			1		
5995	102	3	3	2		
5975	102					
5955	102	2				
5901	102		1	1		
5885	102		1	1		
5837	102					

Location: Avenue	Location: Street	Cracked (severity)	Lifted (inches)	Broken (severity)	Danger (severity)	Notes
58 CT	10201		3			
57	10250	23	18	22		
58 CT	10395		2			
60	10401		2			
60	9601		3	1		
60	9641					
60	9681		2			
60	9701					
60	9741		2	2		
60	9781		1			
6010	98		1			
60	9841	1	1	2		
60	9901	2	1	2		
60	9941		1	1		
60	10001		2			
60	10043	1	2	1		
60	10102	3	1			
6005	102	2	2	9		
60	10200	1	2			
60	10220	1				
60	10300	1				
60	10390	4	1			
6000	104	2	1	5		
6040	104			1		
6080	104		2			
6090	104		2	2	1	
6124	104	2	3	4	1	Asphalt 1
6140	104		2			
6150	104	1	2			
US 1	9801	14		7	20	
7400	98			2		
7380	98	1		1	2	
73 CT	9800	2			2	
73 CT	9801	2	1	4	1	
73	9800	1			1	hole for post
73	9801			1	3	
7252	98		2	1	2	
72 CT	9800		3	1	1	
72 CT	9801			1	1	
72	9820	3		2	1	
72	9850	3	1	2		
72	9880	2				
72	9900	1		2		
72	9940	2	3	2		
7200	100			2		

Location: Avenue	Location: Street	Cracked (severity)	Lifted (inches)	Broken (severity)	Danger (severity)	Notes
72	10110			3		
7225	102	3		2	1	
7218	102	1				
72	10220	2		4		
72	10300	3		2		
72	10390	1		5		at electric box
72	10333	4	1	2		
72	10303			1		
72	10223	4				
72	9505		2			
72	9430	6		5		
72	9340	8		3		
72	9330			5		
72	9300	2	3	5		
72	9200	1		1		
72	9101	3	2	12		
72	9069		1			
72	9117			1		
7121	92		2	5		
7695	104	3	2	1		
US 1	10345	1		3		
US 1	10401	2		5		
7706	104	1		3		
7700	104	3	1	2		
7600	104	6		7		
7560	104					
7530	104	2	1	3		
7490	104	1	1	1		
748	104					
7470	104	5	1	1		
7450	104					
7430	104		1			
7400	104	6	4	1		
7390	104	1	3	3		
7362	104	1	1			
7348	104	1				
7324	104	2	1	1		
7310	104	3		2		
7300	104			1		
7290	104		1	1		
7240	104	5		14		
7230	104		6	1	6	
7220	104		1	2		
7200	104			4		
6300	104					

Location: Avenue	Location: Street	Cracked (severity)	Lifted (inches)	Broken (severity)	Danger (severity)	Notes
6320	104		1			
6340	104					
62	10401		4	1		
62	10400	4	2	4		
6420	104					
6452	104	1		2		
6464	104	3		5		
6500	104	2	4			
6520	104	1	1	1		
6640	104		2			
6650	104					
67	10400		1			
6720	104	3	1	2		
6730	104			3		
6750	104					
6770	104			2		
6790	104	3		1		
6800	104	1		1		
6830	104	2		1		
6860	104	1	1	2		
6900	104					
6950	104		1			
6980	104		1	3		
6955	104	1	3	2		
7001	98	1		5	1	
69 PL	9722					
69 PL	9723			1		
69 CT	9757	1				
6901	98			2		
6885	98		2	1		
6865	98	1	2	1		
6845	98	1	1	1		
6805	98	1	1	3		
6795	98		2	2		
6750	98	2				
67	9790		1			
6720	98	3		9	3	
6701	99 TER	1		4	2	
6710	99 TER			1	2	
67	10090			4		
6700	101	1	1	8	6	
6701	102 TER				1	
6700	102 TER	2		6		
67	10300			1	2	driveway
67	10380	1		1		power box

Location: Avenue	Location: Street	Cracked (severity)	Lifted (inches)	Broken (severity)	Danger (severity)	Notes
6701	88		1			
6700	88					
67	8910					
67	8900					
67	8980			1		
67	9020			1		
67	9060		1			
67	9100			2		
6705	92	1		2		
6700	92	1			1	
67	9226	3	1	1		
6701	94	2		3		
6710	94				1	
67	9450					
67	9490					
67	9550	1		4		
67	9580		1	3		
7700	104	2				
77	10420			1		
77	10500					
77	10520					
77	10530	1				
77	10550					
77	10590			1		
7750	106	1	5	3	3	
7753	106 TER		2			
7761	106 TER			1		
7763	106 TER					
7772	106 TER					
7770	106 TER					
7762	106 TER					
7760	106 TER					
77 CT	10650					
77 CT	10753		1	1		
77 CT	10703		1	1		
77 CT	10701					
77 CT	10643					
77 CT	10641			3		
77 CT	10623	1		3		
77 CT	10621		1	2		
7732	106		2	2		
7730	106			1		
US 1	10945			1		
US 1	10943			1		
78	10950			2		

Location: Avenue	Location: Street	Cracked (severity)	Lifted (inches)	Broken (severity)	Danger (severity)	Notes
78	10940					
78	10930					
78	10920					
78	10910					
78	10900		1			
78	10850			1		
78	10840					
78	10830					
78	10820					
78	10810					
78	10800			3		
78	10801	1	1	2		
78	10811			1		
78	10821			1		
78	10831		1			
78	10881			1		
78	10883		1			
78	10901		1			
78	10903		1			
78	10921			1		
78	10923			2		
78	10941		1			
78	10943					
7400	112		2	1		
7440		1	2	1		
7450			2	2		
7490		2	5			
7500			1	8		
7520			1			driveway
7600			1	4		
7640			2	3	1	
7700			2	4	1	
7730			1	1	2	
7750				1		
7800			1	1		
7820			3	3		
7850			3	1		
7880		1	1	1		
US 1	11215	2		5	1	
US 1	11201	2		2		
VWP	112	6	1	2		
79	11145	1	1	4	3	
79	11141					
79	11117					
79	11115		2			

Location: Avenue	Location: Street	Cracked (severity)	Lifted (inches)	Broken (severity)	Danger (severity)	Notes
79	11113					
79	11111		1			
79	11103			1		
72	10405			3		
7200	104	6	2	6	1	
72	10500		4	4		
105 TER	7200	3	1	4		
72	10600			7		
72	10620		1	10		
72	10720	2	1	3		
72	10740		1		1	
7200	107 TER		1		1	
7201	108 TER	1		4	1	
7200	108 TER			2		
7205	109 TER	2	2	1	1	
7200	109 TER	3		3		
72	canal west side	5		8		
7201	110 TER	1		3	4	
7200	110 TER	3		2		
72	11100	1				
72	11150	3	5	3		
7225	112	2	3			
7245	112		1	2	1	
73	11145		2		1	
73	11140	1		2		
73 CT	11125		1	4	1	
73 CT	11120	1	1	1		
canal north s	112					
67	10400	1		3	1	tree root
67	10500	1			1	
67	10540					
67	10580					
67	10600	1		19	13	
67	10700	1		3		
67	10750			1	2	
67	10800	1				
67	10840				1	
67	10900	1		2		
6701	110				2	
67	11000	1	1	3		
67	11100	1		9	4	
67	11150	2		8	1	
6700	112	3		4	1	
6730	112		3	4	1	
6800	112					

Location: Avenue	Location: Street	Cracked (severity)	Lifted (inches)	Broken (severity)	Danger (severity)	Notes
6810	112	1		7	3	
69	11201	1	2	9		
6900	112	1			3	
6940	112	2	1	4		
6970	112		2	2	2	
70	11201	2	2			
70	11200	1	2	4	1	
6650	112		2	1		
6600	112	6		5		
6500	112			2		
6490	112		5	3		
6450	112	1		1		
6400	112		1			
6390	112	2	2	4		
6350	112		1			
6300	112	1		1		
6230	112	1				
6200	112			1		
6180	112			1		
6150	112	1	1	2		
6100	112	1	4	3	1	lift
6090	112	2	2	3		
6050	112	4	1	2	1	lift
6000	112	1	1	1		
5990	112		1			
5950	112		3		1	lift
5900	112		1	1		
57	10400					
57	10530			1		
5701	107		1	3		
5700	107		1		1	
57	10700	1				
57	11000			1		
5715	111	1	1	1		
5735	111		1			
5755	111	3	2	1		
5805	111	3	1	5		
5825	111	2		1		
5845	111	1	1			
5995	111	3		4	3	1-Asphalt patch
60	11001	1	4	1	1	
60	10951		2	4	2	1-Asphalt patch
60	10901			2		1-Asphalt patch
60	10825			2		1-Asphalt patch
5946	108		3	1	2	

Location: Avenue	Location: Street	Cracked (severity)	Lifted (inches)	Broken (severity)	Danger (severity)	Notes
60	10777		5		1	
5946	107	1		8	2	
5945	107	2	2	4	1	
5942	105		1			
5941	105	1		1		
60	10401			5		
60	11950			4	3	
60	11890		2	1		
6000	118	5		5	2	
60	11760			1		
5940	114 TER	1		2	1	
5945	114 TER		3	4	6	
5990	113				2	
5995	113	1	1	2	1	
60	11201			3	1	
60	11191	1	1	2		
5990	111	1				
57	11205			1		Asphalt
57	11225				1	Asphalt
6660	120	2	1	2		
6600	120	1	3	4		
6500	120	1	3	1	1	
6450	120		2	2	1	
6430	120		1	2	4	
6400	120	3	1	5	1	
6390	120		1	3	2	
6350	120	1	2	4	1	
6300	120	2	4	5	5	
6250	120	3	3	5		
6200	120	2	4	8		
6190	120	2	4	12		
6100	120		4	6		
6060	120	5	6	4	2	
6050	120	1	5	2	1	
6000	120		2			
Pine Needle L	12010		1			
Pine Needle L	12001		1	7	3	
5980	120	1		6	2	
5940	120	1	1	4	2	
5900	120		3			
5820	120	2	1	4	1	
5800	120	2	3	4	2	
Moss Ranch P	12000			5		
67	11220				1	
67	11300		1	1		

Location: Avenue	Location: Street	Cracked (severity)	Lifted (inches)	Broken (severity)	Danger (severity)	Notes
67	11350	1	2	4		
67	11400			1	1	
6701	115			1		
6700	115		3	1		
6705	117			4	2	1-Asphalt patch; driveway
6700	117	1		3		
67	11720		2	2		
67	11850	1	2	5		1-Asphalt Patch
67	11900		1	2		
6701	120			3	1	
7125	120	1	4	1		
7175	120		1		2	1-Asphalt Patch
71 CT	12050			1	1	
71 CT	12025			7		
70 CT	12020	4	1	3	2	
70 CT	12025			1		
69 PL	12000	1		7	1	
69 PL	12005	1	2	3		
6900	120		4	3	3	
69 CT	12001		2	1	2	
6860	120		1	7	4	
6830	120		4	8		
6800	120		1	1	1	
72	11202	7		7	1	
72	11230	5	1	3		
72	11300		1			
72	11340			1		
72	11380	1	2			
72	11400		1			
72	11420		3		1	
72	11490	3	2			
72	11570	1	2	2	1	
72	11590		1	2		
72	11600			2		
72	11630		1			
72	11660	1	2		2	
72	11700		2	2		
72	11730		1			
72	11760			3		
72	11800		1	2		
72	11850	2				
72	11900	1		1		
72	11950	1	1	1		
7241	120			4		1-Asphalt Patch
7261	120		2			

Location: Avenue	Location: Street	Cracked (severity)	Lifted (inches)	Broken (severity)	Danger (severity)	Notes
72 PL	11950		1	7		
73	11995	1	1	6		
7700	112					
77	11300			3		
7701	114					
7700	114			4		
77	11440		1	1		
7701	115		2		2	
7700	115			2		
77	11600			11	3	
7701	117	2		5		
81 RD	11557			2		
81 RD	11690		2		3	
8183	117					
8185	117			1		
8189	117			1		
US 1	11675	1	3	1	1	
US 1	11701		3	5		
81 RD	11700		1	2		
81 RD	11705		2			
80 RD	11700			1		
80 RD	11701		1			
7840	117					
7830	117					
7820	117		1	4	1	driveway
7790	117			1		
81 RD	11300		3	5	3	
81 RD	11400	2	2	1		
81 RD	11410	2		2	1	
81 RD	11424		2			
81 RD	11426			2		
81 RD	11434					
81 RD	11436			1		
81 RD	11500			1		
81 RD	11502				1	
81 RD	11520					
81 RD	11522				1	
81 RD	11600					
81 RD	11602		1	1		
81 RD	11690		3			
81 RD	11692		2	1		
81 RD	11700	1				
81 RD	11702					
81 RD	11710		1			
81 RD	11712		2	1		

Location: Avenue	Location: Street	Cracked (severity)	Lifted (inches)	Broken (severity)	Danger (severity)	Notes
81 RD	11720					
81 RD	11722					
81 RD	11742					
81 RD	11744		1	1		
81 RD	11780					
81 RD	11782					
81 RD	11942		1	1		
8125	120				1	
8127	120		2			
8135	120		2	6		
8140	120			2		
8130	120		1	3		
8100	120		1	2		
8050	120					
8030	120					
8000	120	3		6		
7990	120					
7970	120	1		1		Asphalt patch
7950	120		2			
7930	120					
7900	120					
79	12001	1	1	1		
7870	120			1	1	
7848	120		1	1		Asphalt patch
7830	120		1	1		
7800	120					
7790	120			1		
7770	120			2	3	
7750	120			5	3	power box
7700	120			1	2	power box
82	12031			1		
82	12151		1	1	1	
82	12250	2		4		
82	12368	1		4	2	
82	12372	1				
82	12374		1	1		
82	12376	1		1		
82	12378		1			
82	12380		2		2	
82	12386					
82	12392					
124	8201	1	4	5	1	
124	8203					
124	8281					
124	8285		1			

Location: Avenue	Location: Street	Cracked (severity)	Lifted (inches)	Broken (severity)	Danger (severity)	Notes
US 1	12395					
US 1	12401		1			
8290	124		2		1	
8286	124		2			
8224	124		4	2	1	
8200	124		1		1	
82	12401			1		
8100	124			1		
8131	124	3	5	1		
82	12375					
7700	120		3			
77	12020	1		3		1-Asphalt patch
	12100	3	1	1		
7715	122			1	1	
7700	122			1		
77	12222	1	1	5		
7701	Palmetto CT	3	2			
7700	Palmetto CT		2			
8000	124			3		
80	12401	4		4	1	
7980	124	2		2		
7940	124			2		
7900	124	1	3	1		
7860	124		1	1	2	
7840	124				1	
7800	124	1				
7790	124			2		
7750	124		1			
7721	124			1		
7701	124 TER	4		4		
7702	124 TER	1	2	1		
7705	125 TER	3	1	3	2	
7700	125 TER		5	1	2	
77	12624		2	1		
77	12632	1	1			
77 CT	12735		4	6		
77 CT	12730	1	6	3		
7751	128		3			
78	12775		7	2	1	
7801	128	2	2	2	1	
7825	128		2		1	
7845	128		3	1	4	
7865	128	1	2	3	3	
7915	128			1	1	
7935	128		1			

Location: Avenue	Location: Street	Cracked (severity)	Lifted (inches)	Broken (severity)	Danger (severity)	Notes
7955	128	1	1	1		
80	12740		1			
8045	128		3	1		
8101	128	3	3	5	2	
8145	128		2	2		
8201	128	1	1	3	1	
8221	128	2		2		
8241	128	1	1	2		
8251	128	1		2		
8281	128	1	3	4		
8287	128			1		
US 1	12651	2	2	2	2	
US 1	12795	1		2		
US 1	12855	2	3	4	4	water valve box
83 CT	12800	1	2		1	
82	13590		4	1		
8205	136		1	6		
8251	136		4	3	5	
8285	136		2	1	1	
8305	136	2		3	1	
83 CT	13595	1	1	4	4	1-Asphalt Patch
8375	136	3		4	2	1-Asphalt Patch
8395	136					
84	13550	1		1		
82	12800				2	
82	12840		4	1		
82	12900	2	1	2	1	
82	12940	1	1	2		
8200	130		2	1	2	
82	13020		1	2	3	
82	13070	1		3	2	
82	13120	1	2	2	3	2-driveway
82	13140	1	2	4	1	
8205	132	1	3	1		
82	13200	1	5	1	2	
82	13240	1	2	7	3	
8200	133	2	4	4	2	
82	13350	1			3	
82	13390		1	2	4	1-driveway
8200	134		4	2	3	
82	13480		2	1		1-driveway
82	13550		4	1	2	driveway
82	13590		2		3	
77	13560	2	1	3	2	
77 CT	13561			4	2	

Location: Avenue	Location: Street	Cracked (severity)	Lifted (inches)	Broken (severity)	Danger (severity)	Notes
77 CT	13560					
7771	136					
7791	136					
7801	136					
77	12800	1	2		1	
7701	129		3	4		
7700	129		1		1	
7701	130		1		1	
7700	130		3	3	1	
7711	131		2	1		
77	13100	2	1	5	2	
77	13150	2		1	1	
7700	132	2	2	1	1	
7701	134	1	6		2	
7700	134		6		1	
77	13420	1	1	2	2	
7701	134 TER		8	1	2	
7700	134 TER		6		1	
77	13500		3			
77	13530		2	1	1	
77	13560	1	2	4		
7401	136	1	4	1		
7425	136	2	1			
74 PL	13545		3	3	1	
74 PL	13540		6	2	1	
75 CT	13575	3	3	5	1	
7535	136	1	1	2		
7605	136	2	4	1		
77	13575		7	1	2	
6901	136	4	4	3	2	
69 CT	13575		1	2	2	
69 CT	13540		7			
70	13541		3			
70	13590					
7101	136		1			
7121	136					
7141	136	1	6	1		
72	13575		1			
72	13570		1	1		
72 CT	13575		2	2	1	
7261	136		1		1	
7281	136	1	4			
7301	136		3		2	
7331	136	4	1		1	
7351	136		3	6	1	

Location: Avenue	Location: Street	Cracked (severity)	Lifted (inches)	Broken (severity)	Danger (severity)	Notes
73 CT	13590	1	2	3	1	
74	13575	2	3	4	5	
74	13555			2		
74	13501		1		1	driveway
74	13451			1		
74	13401			3		
74	13355		1	3	4	
7395	133 TER	1	2	2		driveway
74	13245		3	3		
7200	128		5	3	1	
7201	129	1	2	4		
7200	129	1	1	3		
7205	130	3	3	6		
7200	130	4	4	1		
7205	131		2	4		
7200	131		4		3	
7211	132		4	2	1	
7200	132		4	5	1	
72	13250	3	4	1		
72	13300		3	4	2	
7200	133 TER	1	5	6	2	
72	13400	3	1	3		
72	13450	1	2	2		
72	13500	5		3	3	
72	13540		1	4	2	
72	13570	1	2			
72	13575	1	3	1	2	
72	13525			2	1	
72	13505	1		2		
72	13471		4		1	
72	13421	1	2	9		
72	13401		3	2		
72	13301		2			
7160	133		4	3	2	
7690	128			2		
7650	128				2	
7550	128		2	3	2	
7500	128		4	3	1	1-driveway
7480	128		1	9	4	
7460	128			2	2	
74 CT	12801	1	3	1	2	very
74	12800		2	4	4	
7396	128		4	1		
7390	128		1			
7360	128		1	1		

Location: Avenue	Location: Street	Cracked (severity)	Lifted (inches)	Broken (severity)	Danger (severity)	Notes
7340	128		2	1		
7300	128			1		
7280	128		3	1	3	
7260	128		4	3	1	
7240	128		4	1	1	
7220	128	1	1	1		
7200	128		4		3	
7203	128		3	2	1	
7231	128		5	1		
7241	128		5	3	2	
7271	128		5	3		1-water box
7291	128		4			
7301	128	2		6		
7341	128	1		3	1	
7450	120		1	3		
7440	120		8	2		
7405	122		4	3	1	
74 CT	12200	1	3	3	4	
7401	124	1	2	2		
7300	120		3		2	
7305	121		2	2		
7300	121		1	1	1	
7305	122			1		
7300	122			1		
7305	123		1		1	Asphalt Patch
7310	123		6		2	
7305	123 TER		2			
7300	123 TER		8			
72	12051		2	1		
72	12071		1			
72	12121		1			
72	12181		1	2		
72	12201	2	1	2		
72	12221					
72	12241			1		
72	12305					
7275	124		1			
72	12400	1	1			
72	12440		1	8	2	
7660	124	2	1	2		
7600	124			2		
7540	124			2		
75	12400			1		
7450	124	1		4		
7440	124			1		

Location: Avenue	Location: Street	Cracked (severity)	Lifted (inches)	Broken (severity)	Danger (severity)	Notes
7430	124	1	1	1		
7400	124		1			
7361	124	1	2	1		
7341	124	4	2			
7321	124		1			
7301	124	1				
7291	124	2	3	2	1	
7280	124	3	2	2	1	
7240	124	4		4		
7230	124		2		1	
7220	124	3				
72	12400	4	1			
72	12401		1	1		
7221	124			1	1	
7231	124					
7241	124					
7281	124	1		1		
73	12385		3	6		
7300	124		5		1	
6700	130 TER			2	3	
67	13100	2	4	1		
6700	132	3	1	7	1	
67	13250			1		
6700	133 TER			4		
67	13440	2	1	2		
67	1470		1			
67	13580	2	2	3		
6725	136	1	10	2	9	driveway
67 CT	13575		1	3	1	
67 CT	13590	1	5	3		
68 CT	13575		3	1		
68 CT	13560	3	5	4	1	
67	12000	1	1			
6705	122 DR		2	2		
6700	122 DR	2		5	2	
67	12250		1	4		
67	12300			2		
6701	124	1	1	4		
67	12400	2	1	8	1	
6701	125 TER		3			
67	12600	1	2	1	1	
67	12650		1	1	1	
67	12700		2	4		
6701	128	1		2		
6700	128	2	1	4	2	

Location: Avenue	Location: Street	Cracked (severity)	Lifted (inches)	Broken (severity)	Danger (severity)	Notes
67	12820		4	4	2	
67	12900		1	2		
67	1295	1	2	8		
6700	130 TER		1	2	3	
69 PL	12375		5		2	
69 PL	12350	1	3		3	
70 CT	12355		1	7		
70 CT	12350			1		
71 CT	12351			1		
7199	124		2		2	
72	12401	1	8	1	1	bus stop
7160	124		5	1	2	water valve box
71	12475	1	4	1	1	
7000	124		1	5	2	
6970	124		6	3	3	driveway; water box
6950	124		4	3		
6920	124		6	1		
68 CT	12400	2	5			
68 CT	12401		3			
6800	124		2	2	1	driveway
6770	124		4	1		
6760	124		5	1		water box
6720	124			2	4	
6650	124	1	7	10	1	
6600	124	1	2	2	3	
6550	124	2	8	4	2	
6500	124		7	1	1	
6460	124	1	1	5	2	
6430	124	1	3	6	11	very
6400	124		2	8	2	
6390	124	3	3	1	1	
6350	124	2	1	5	9	
6300	124		2	5	4	
6290	124	3	3	8	3	
6250	124	1	2	6	1	
62	13025	1	5	2	2	
6160	124	1	5	2	2	
6150	124		1	5	2	
6120	124	2	1	9	2	
7821	136		1			driveway
7841						
7861			1	2		
79	13531		1	2		
7901	136	1	2		1	
7925		1	3	5	1	

Location: Avenue	Location: Street	Cracked (severity)	Lifted (inches)	Broken (severity)	Danger (severity)	Notes
7945			1		1	
7965		4	1	4		driveway
7985			2			
8001			5	1		driveway
8015			1			
8101			1	1	3	driveway
8115				8	1	
8125			1			
8135			1			

APPENDIX C: COMPLAINT OF DISCRIMINATION FORM

**Village of Pinecrest
Title VI Nondiscrimination Policy
Complaint of Discrimination Form**

Date

Complainant's Name

Complainant's Email

Complainant's Phone Number

Complainant's Address

Street Address Line 2

City

State

Zip Code

Date of incident or situation

Name and location of department who you allege discriminated against you.

Alleged reason for discrimination:

Race

Color

National Origin

Sex

Age

Disability

Religion

Income

Family Status

Other

Please describe what happened. Be as detailed as possible about the alleged acts of discrimination. Include names of any individuals, if known. Additional pages may be attached if needed.